

## Promoting Education that Cultivates Self-Esteem

To ensure that every child recognizes their own irreplaceable value as well as that of others, fully realizes their potential, and develops individually, it is crucial to enhance self-esteem.

In light of this, our vision places "Promoting Education that Cultivates Self-Esteem" as the top priority among 32 measures, and advances the following initiatives.

### Major Initiative 1: Enhancing Family Education Support and Early Childhood Education

1. Promote educational activities that benefit children's healthy growth and enhance family education.
2. Strengthen support for families facing various challenges.
3. Improve the educational environment to lay a solid foundation for the healthy development of young children's personalities.

### Major Initiative 2: Building Schools that Embrace Mutual Recognition and Assistance

1. Promote initiatives that help children build relationships of mutual recognition, encouragement, and assistance.
2. Respect children's spontaneous and autonomous activities, advancing initiatives that stimulate creativity.
3. Promote initiatives that cultivates children's empathy and their ability to express gratitude.

### Major Initiative 3: Providing Diverse Learning Guidance and Support for Children

1. Advance curriculum design that combines personalized and collaborative learning, as well as inquiry-based learning.
2. Promote initiatives that allow children to feel that they can contribute to others, their community, and society.
3. Encourage activities aimed at creating new value through interactions with others.
4. Strengthen experiential activities that enable children to gain a sense of accomplishment and enhance their spirit of challenge.
5. Enhance community cooperation to provide learning support for children in places beyond the family and school.

### Major Initiative 4: Improving Educators' Instructional Skills

1. Further enhance educators' ability to build trusting relationships with each child.
2. Promote the school as a place where educators can gain a sense of happiness and value.

## Realizing the Education Vision

To realize this vision, we earnestly request cooperation from families, communities, businesses, and other stakeholders:

### Schools

1. Cultivating Self-Reliance, Colaborability, and Creativity.
2. Ensure learning opportunities for children.
3. Create schools that are open to and trusted by the community.



### Families

1. Create a safe and reliable living environment.
2. Establish necessary life habits.
3. Collaborate with schools.



### Communities and Businesses

1. Provide or support diverse learning opportunities.
2. Assist or contribute to educational policies.



### Administration

1. Respond promptly to emerging issues or situations.
2. Improve the educational environment.



For more details, please visit the Mie Prefecture Board of Education's website or contact us at:

Mie Prefecture Board of Education Secretariat, Education Policy Division

Address: 13 Komeicho, Tsu City, Mie Prefecture, 514-8570

Phone: 059-224-2951 Fax: 059-224-2319

E-mail: kyosei@pref.mie.lg.jp

Mie Prefecture Education Vision

<https://www.pref.mie.lg.jp/KYOSEI/HP/m0202400076.htm>



QR Code

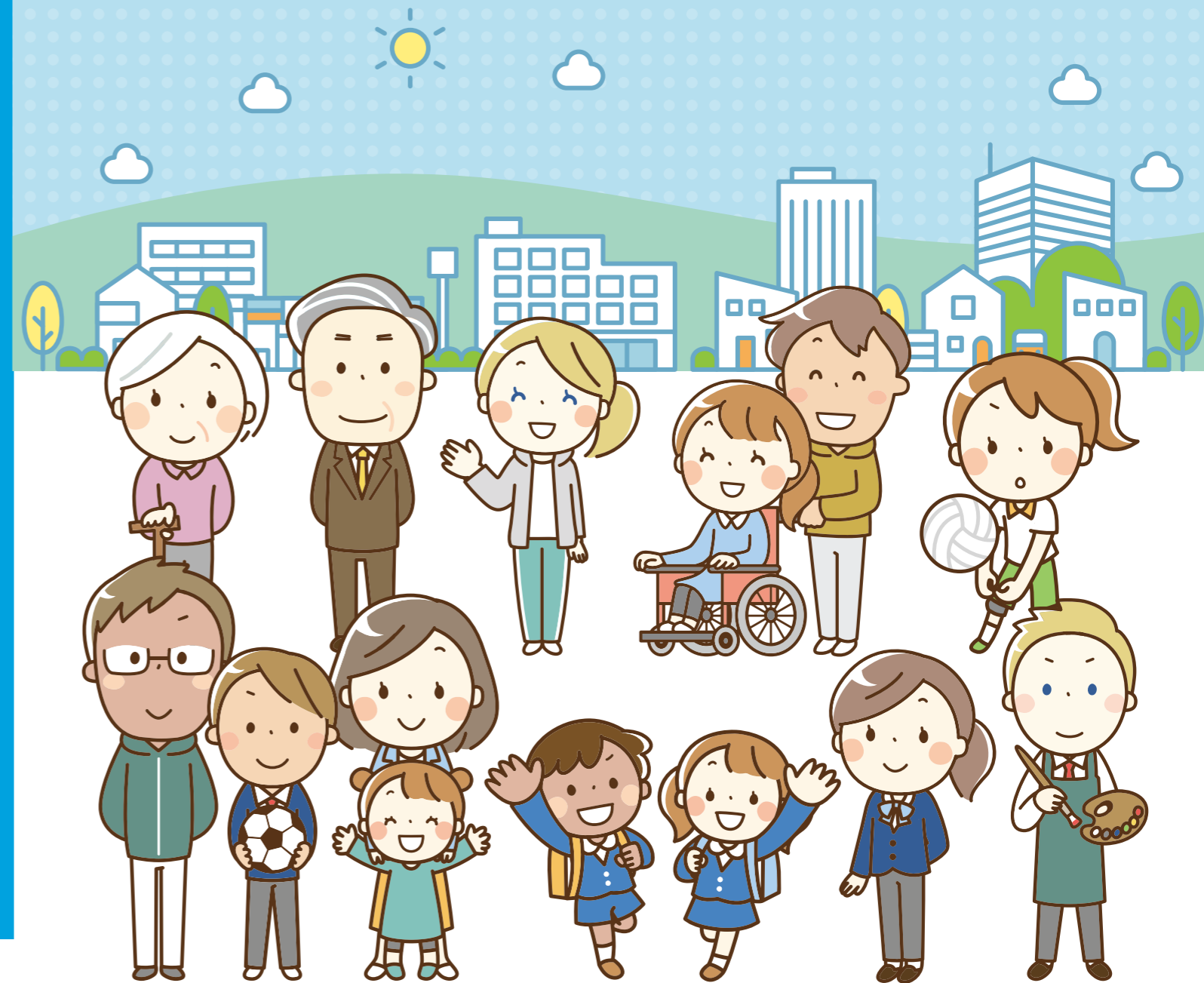


MIEBI  
Mie Prefecture  
Board of Education  
Mascot Character

# Mie Prefecture Educational Vision

Empowering Children to Showcase Their Individuality and Achieve a Bright Future

From Reiwa 6 (2024) to Reiwa 9 (2027)



March, Reiwa 6 (2024)

Mie Prefecture, Mie Prefecture Board of Education

Leaflet

# Education Vision Framework

This vision outlines the educational direction for our prefecture based on the "abilities we hope children will possess". It clearly defines the "Basic Policy of Educational Measures" and the "Perspectives Running Through the Educational Vision" to achieve this goal. The "Basic Policies and Measures" section systematically introduces six basic policies and 32 measures designed to develop the "abilities we hope children will possess".

## Abilities We Hope Children Will Possess

### Self-Reliance

The ability to learn independently, face challenges, feel confident and proud, and take responsibility.

### Colaborability

The ability to support and live harmoniously with others, as well as handle conflicts and contradictions.

### Creativity

The ability to lead innovation, propose new ideas and solutions, and create new value.

## Basic Policy of Educational Measures

We aim to provide high-quality education for the children who will shoulder the future of Mie Prefecture by preventing bullying, fostering self-esteem, and enhancing the appeal of the teaching profession.

- ① Expand children's future opportunities    ② Foster each child's self-esteem and enhance their sense of happiness
- ③ Develop the ability to create a prosperous society    ④ Strive to provide more comprehensive education    ⑤ Aim to build a society where everyone can learn at any time and play an active role

## Basic Policies and Measures

### Basic Policy 1: Cultivating Fundamental Abilities for the Future

Develop children's overall moral, intellectual, and physical capacities, laying a solid foundation for lifelong growth.

#### Measures:

1. Promote educational activities that cultivate each child's self-respect.
2. Foster solid learning abilities.
3. Advance early childhood education.
4. Promote human rights education.
5. Enhance moral education.
6. Promote reading and cultural arts activities.
7. Advance health education and Food and Nutrition Education.
8. Improve children's physical abilities and reform sports club activities.



### Basic Policy 2: Developing the Ability to Create the Future and Bear Social Responsibility

Foster children's attitude toward active learning, their spirit to challenge without fear of failure, and their awareness of participating in social construction.

#### Measures:

1. Promote career education.
2. Advance glocal (global and local) education.
3. Develop the ability to create new value.
4. Foster the ability to actively participate in social construction.



### Basic Policy 3: Advancing Special Education

For children with special needs, cultivate their independence and the abilities necessary for future social participation.

#### Measures:

1. Promote personalized and continuous education.
2. Enhance educational activities at special education schools to foster independence and social participation.



### Basic Policy 4: Building a Learning Environment Free from Bullying and Violence

Cultivate children's attitudes and abilities to avoid bullying and ensure schools properly recognize and handle bullying incidents.

#### Measures:

1. Promote measures to eliminate bullying and violence.
2. Improve awareness of bullying and enhance in-school and external education consultation systems.
3. Advance rapid and effective responses to bullying.
4. Enhance educators' abilities to address bullying and improve support systems.



### Basic Policy 5: Promoting an Educational Environment Where Everyone Can Learn Safely

Improve the educational environment so that every child can learn with peace of mind, ensure safe commuting, and establish systems to respond to emergencies.

#### Measures:

1. Support children and students in non-attendance situations.
2. Foster the independence of children and students with foreign cultural backgrounds.
3. Advance disaster prevention education and disaster countermeasures.
4. Ensure children's safety and peace of mind.
5. Build a learning safety net and guarantee continuous learning.

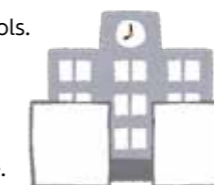


### Basic Policy 6: Creating a Supportive Learning Environment

Establish community-based learning support systems, enhance educators' professional abilities, and promote reforms in school work styles.

#### Measures:

1. Improve educators' qualities, secure human resources, and promote compliance.
2. Promote reforms in school work styles.
3. Advance the use of information and communication technology (ICT) in education.
4. Create schools that develop together with the community.
5. Enhance the uniqueness and appeal of schools.
6. Improve school facilities.
7. Support learning within families.
8. Promote social education and enhance society's educational capacity.
9. Protect, utilize, and pass on cultural heritage.



## Perspectives Running Through the Educational Vision

Start from the children's perspective, emphasizing personalized learning.

Realize continuous learning across grades and school types.

Strengthen the collaboration between schools, families, and communities, creating a system for jointly nurturing children.

Create a favorable working environment for educators, enabling them to passionately engage with each child.