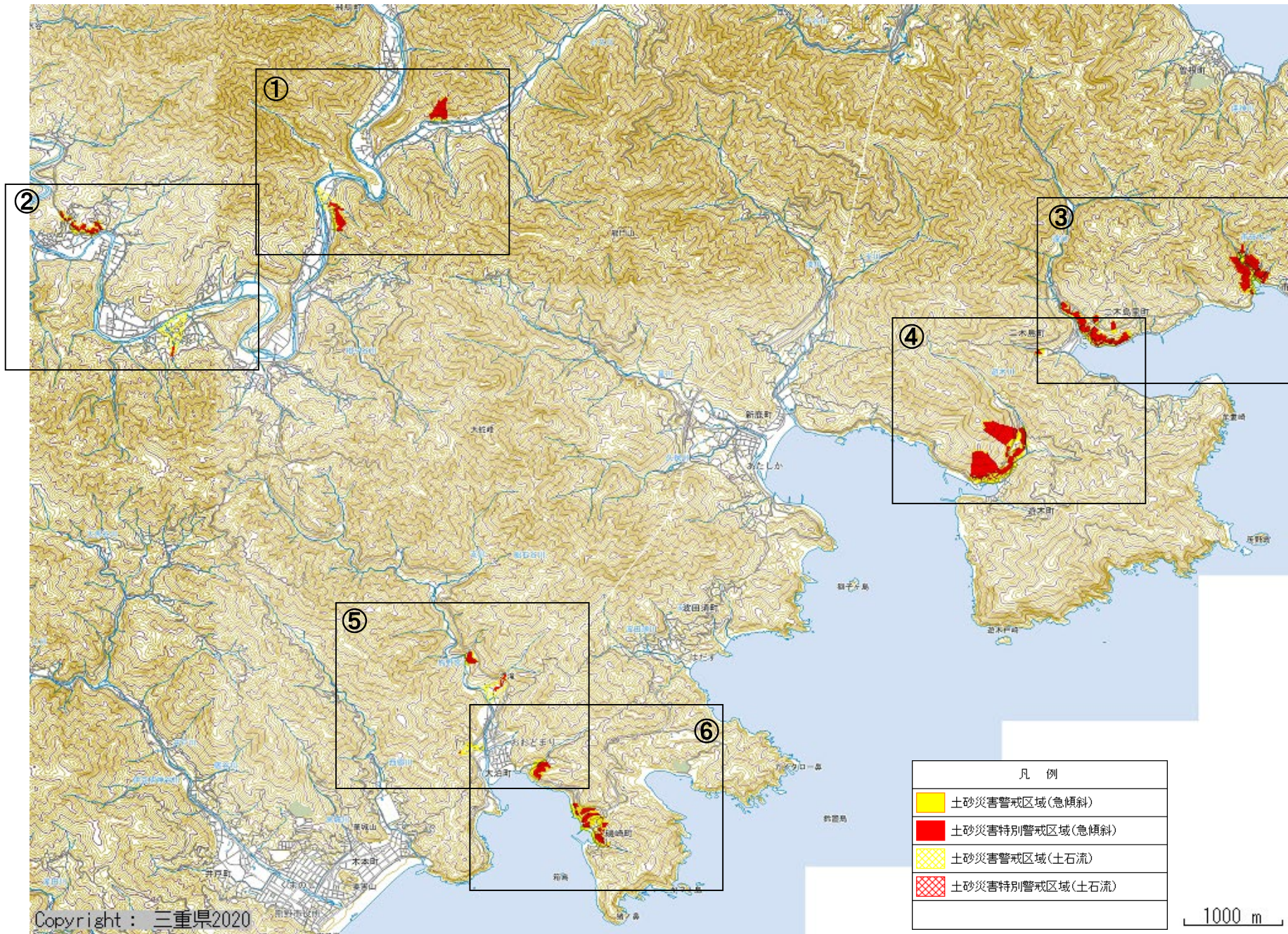


「道の駅」熊野きのくに

熊野市

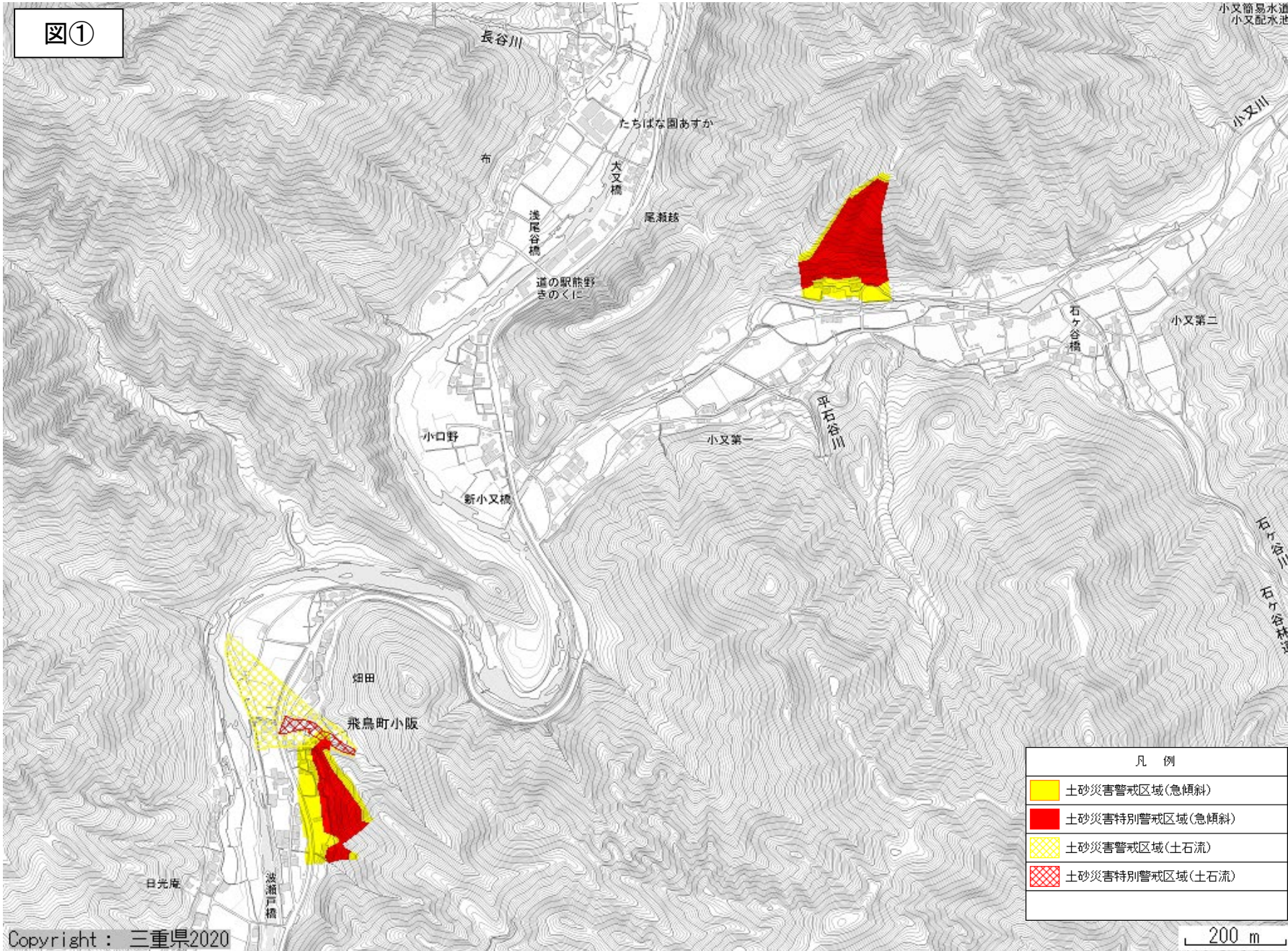
凡例	
	土砂災害警戒区域(急傾斜)
	土砂災害特別警戒区域(急傾斜)
	土砂災害警戒区域(土石流)
	土砂災害特別警戒区域(土石流)





2500 m



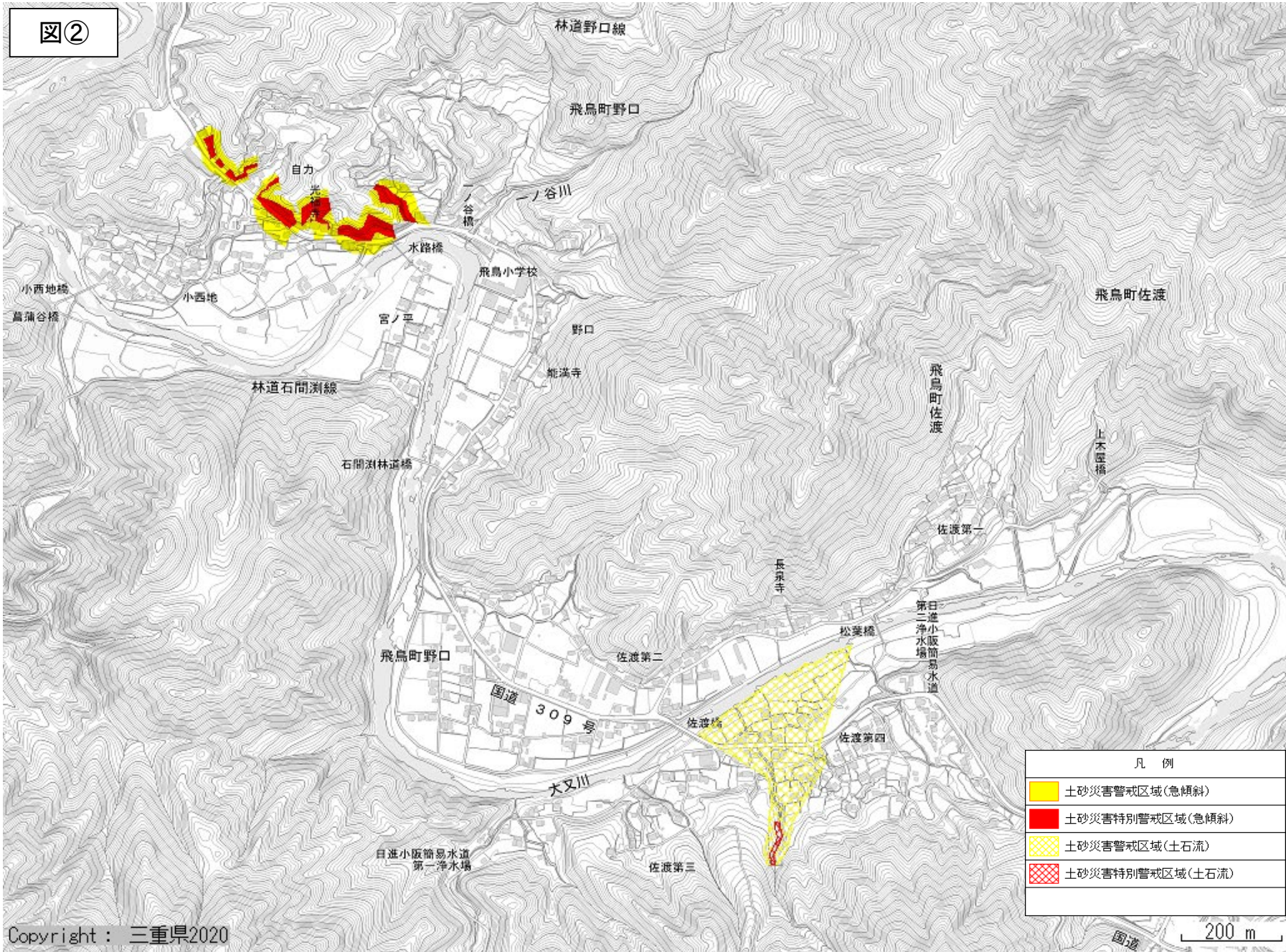
図①

小又簡易水道
小又配水池

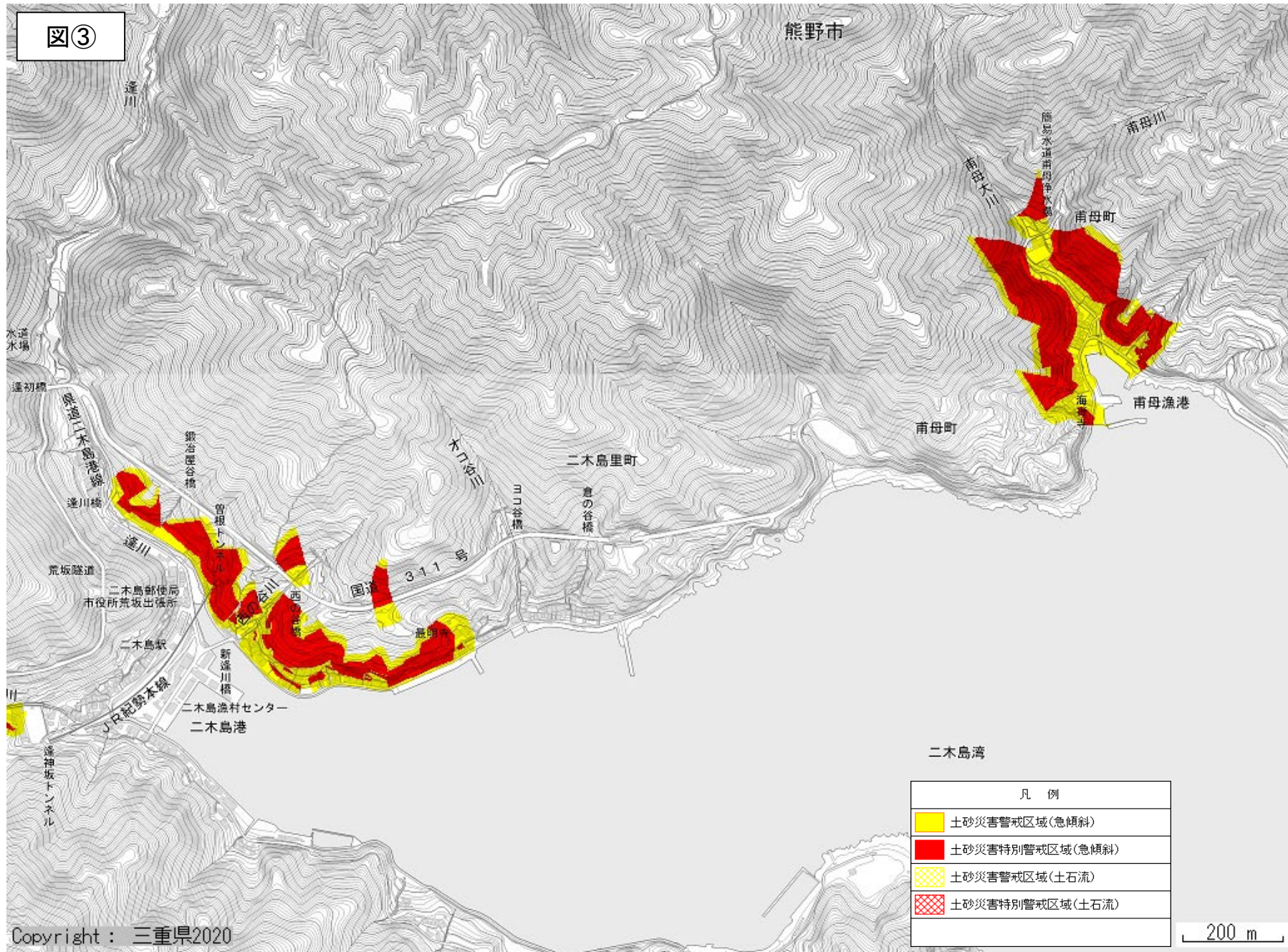


凡例	
	土砂災害警戒区域(急傾斜)
	土砂災害特別警戒区域(急傾斜)
	土砂災害警戒区域(土石流)
	土砂災害特別警戒区域(土石流)

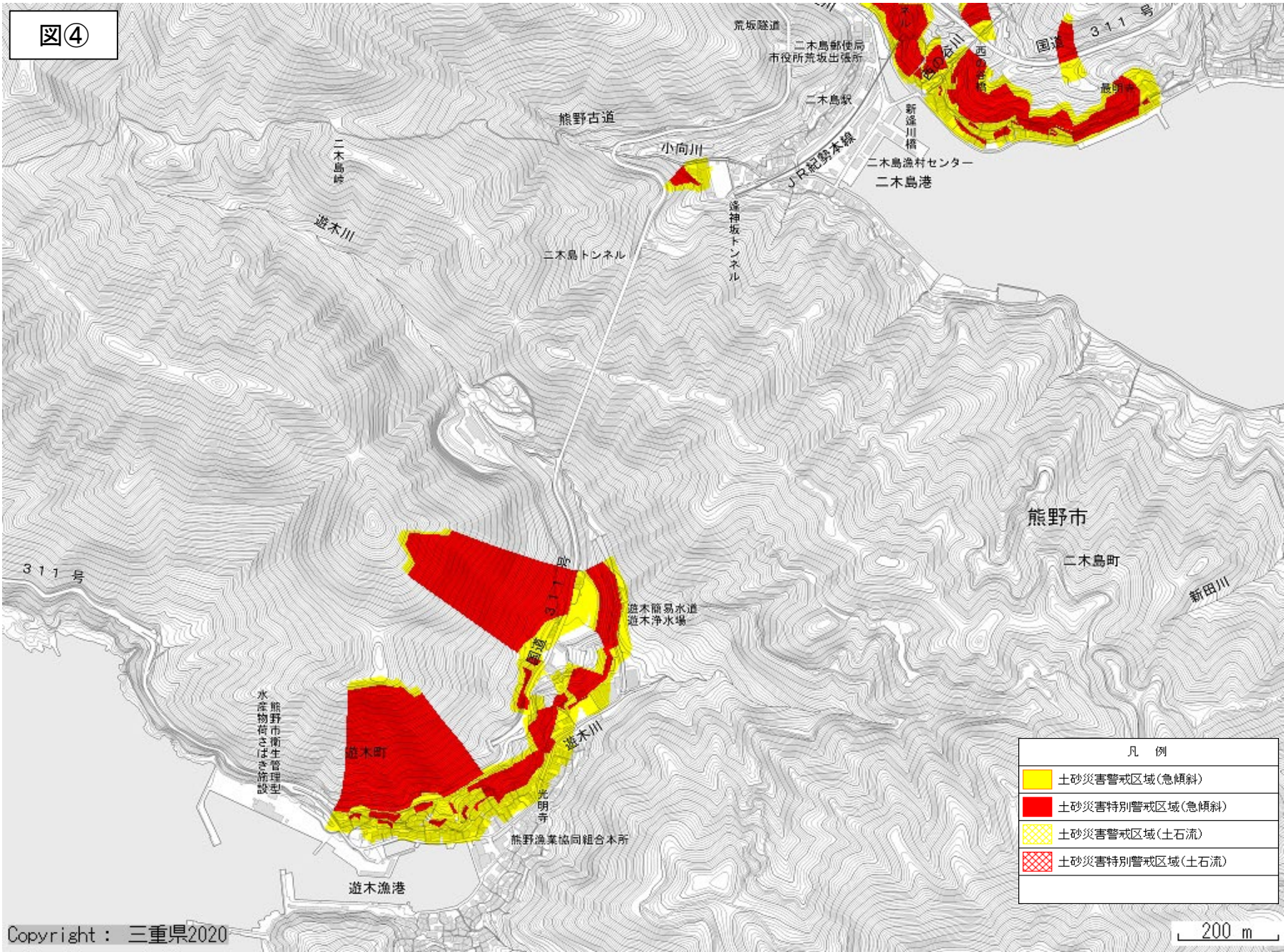
図②



図③



図④



図⑤

