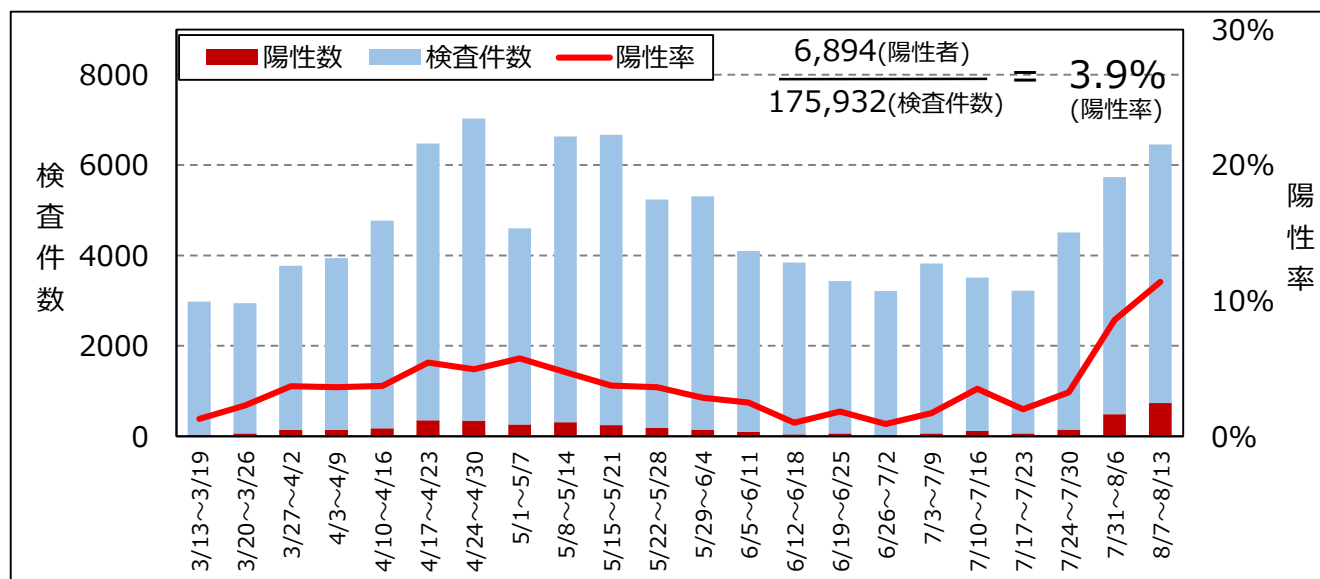


県内PCR等検査件数・陽性率 (R3.8.13時点 n=175,932)

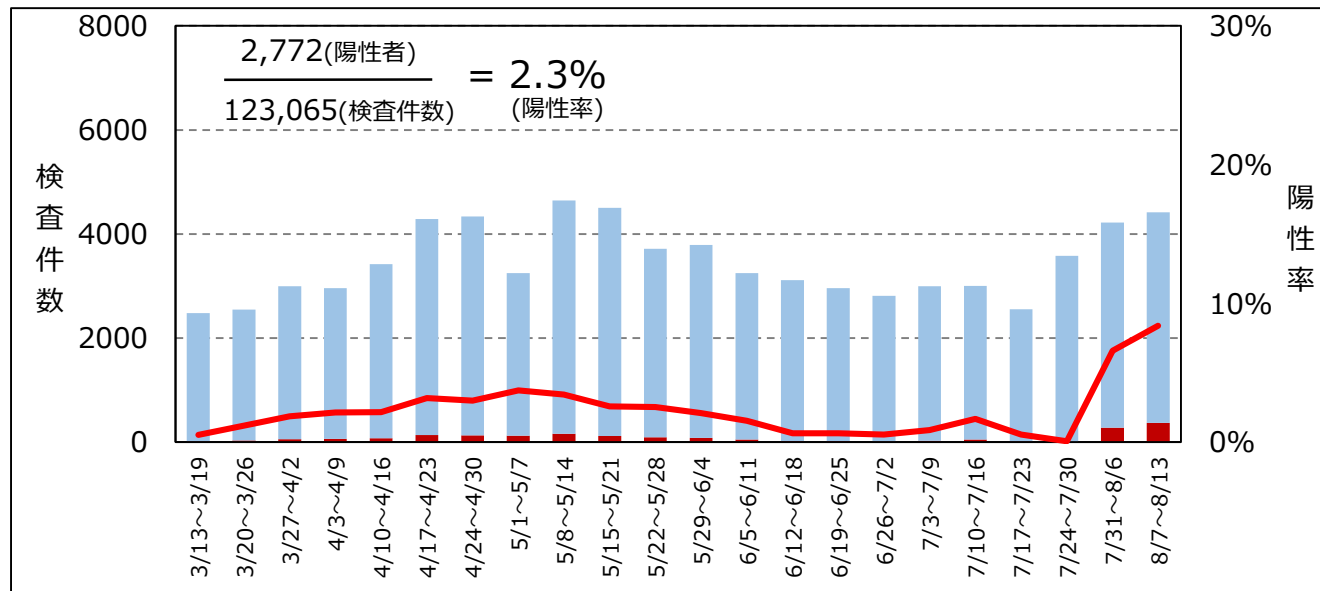
全体陽性率 (n= 175,932)

※陰性確認のための検査を除く



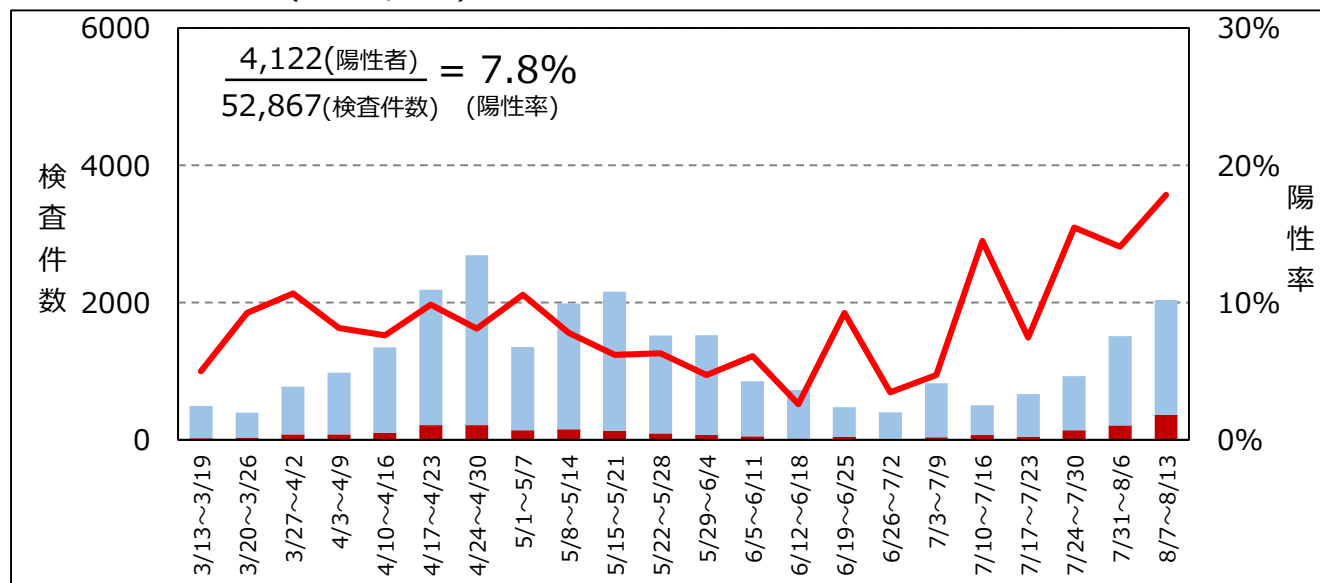
疑い例検査陽性率 (n=123,065)

※疑い例検査…疑い例として診断され、実施した検査



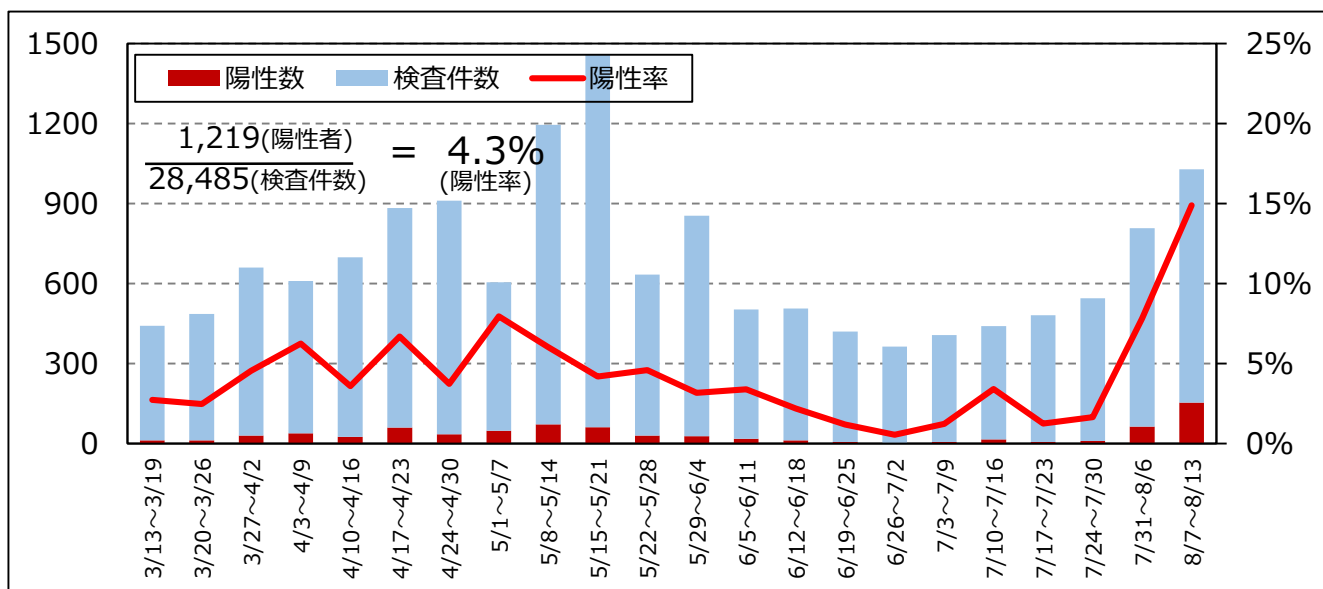
接触者検査陽性率 (n=52,867)

※接触者検査…接触者調査の一環で実施した検査

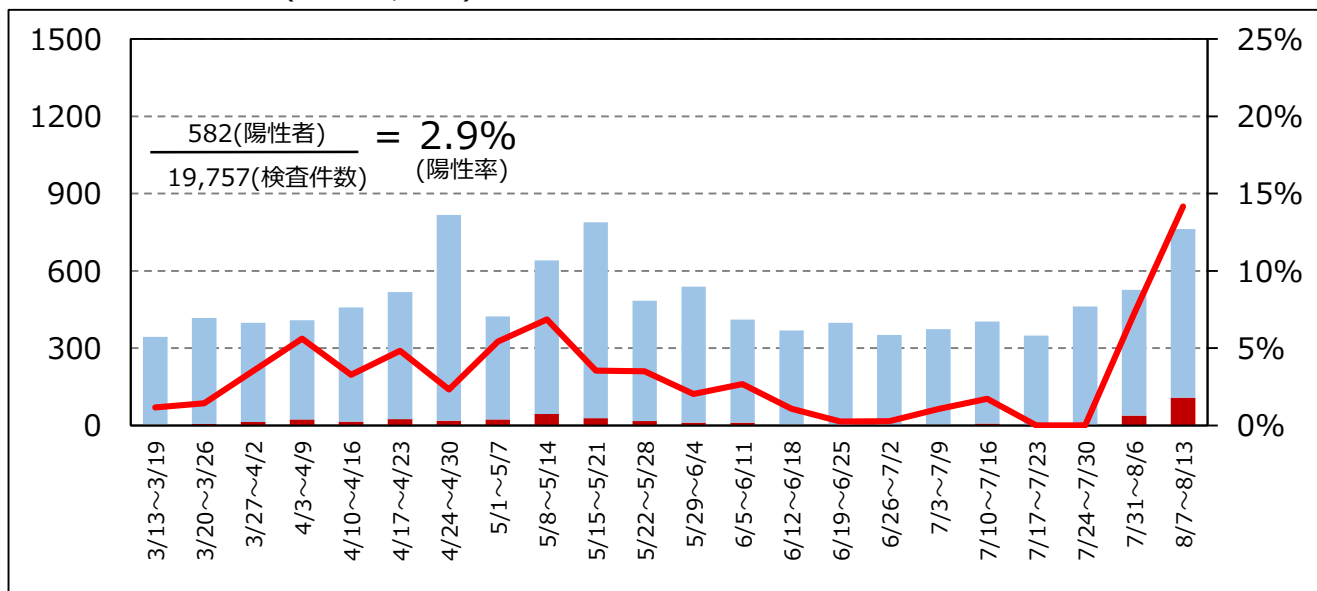


桑名保健所管内検査件数・陽性率 (n=28,485)

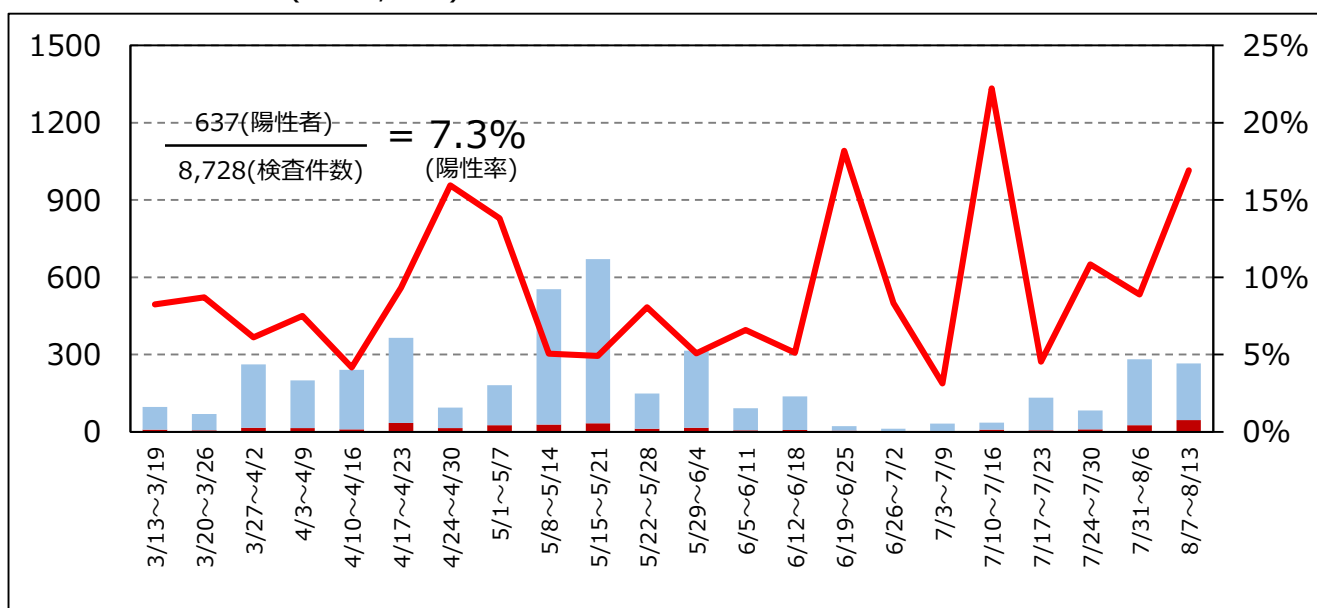
全体陽性率(n= 28,485)



疑い例検査陽性率 (n= 19,757)

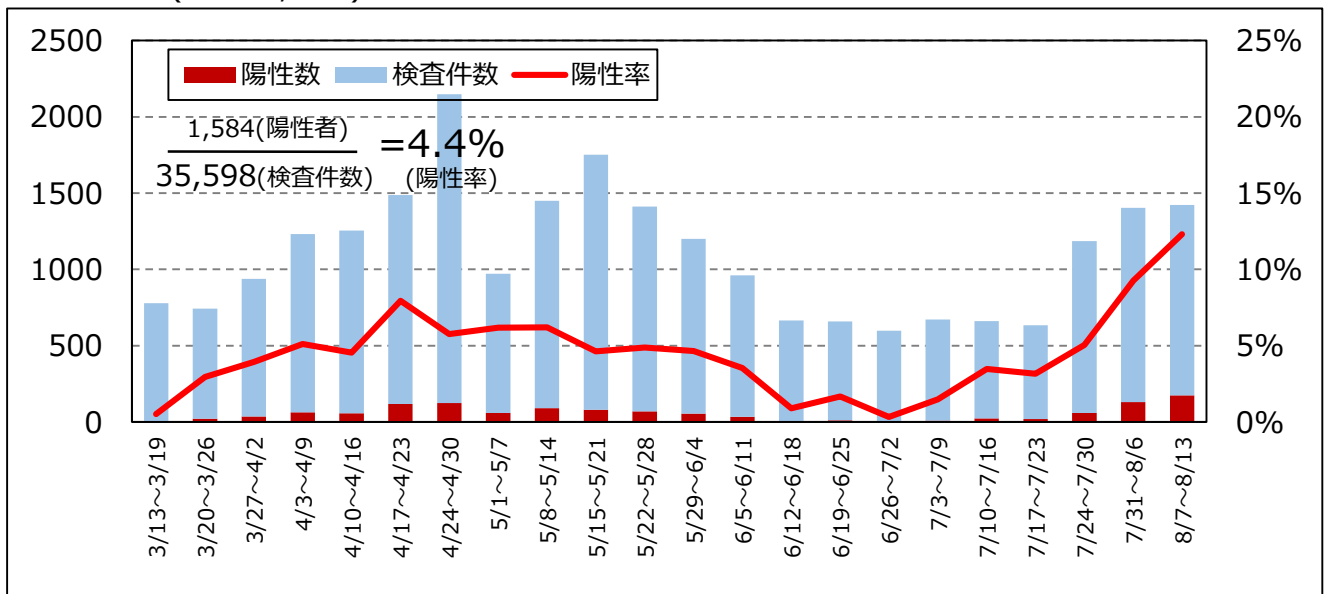


接触者検査陽性率 (n= 8,728)

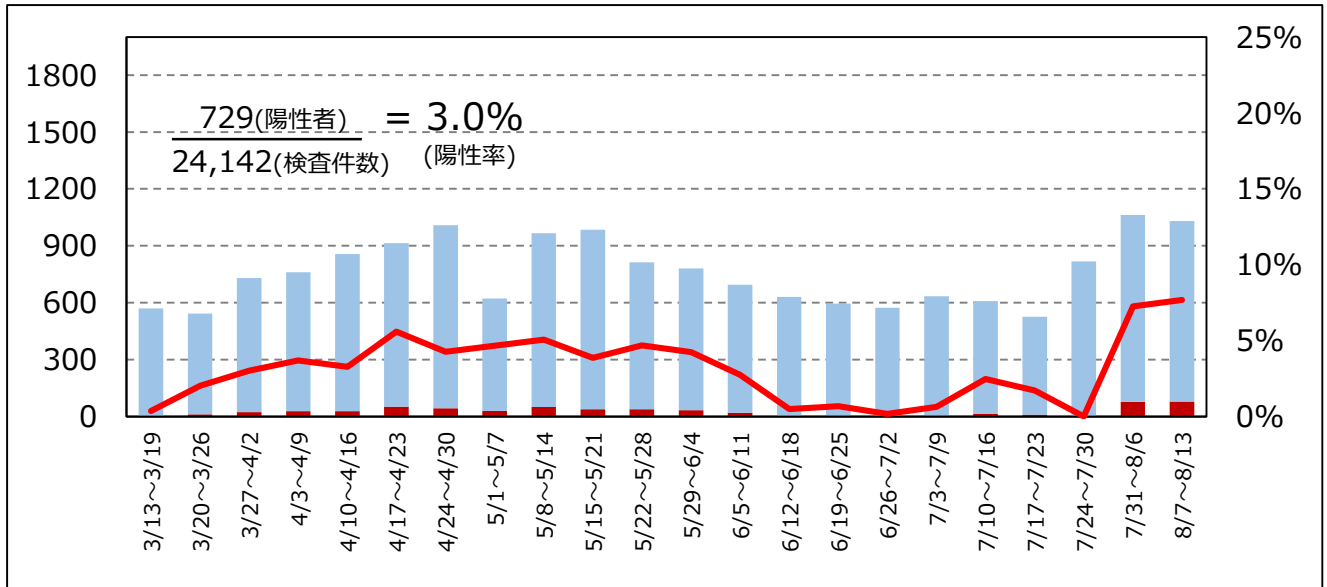


四日市市保健所管内検査件数・陽性率 (n= 35,598)

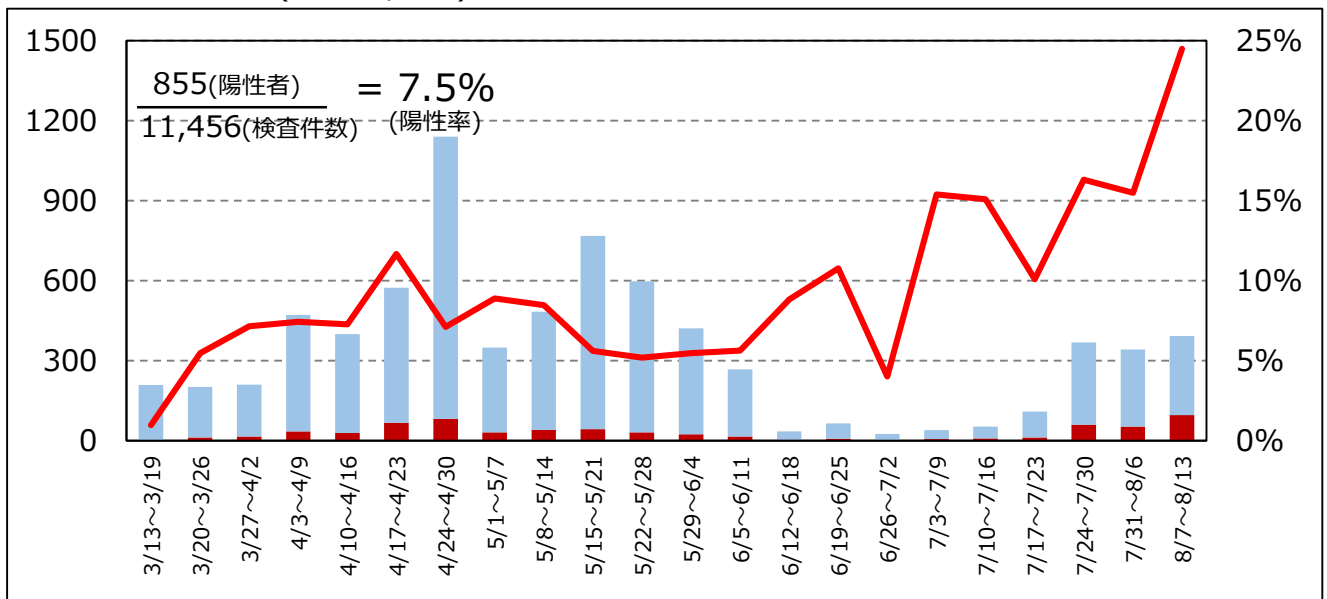
全体陽性率 (n= 35,598)



疑い例検査陽性率 (n= 24,142)

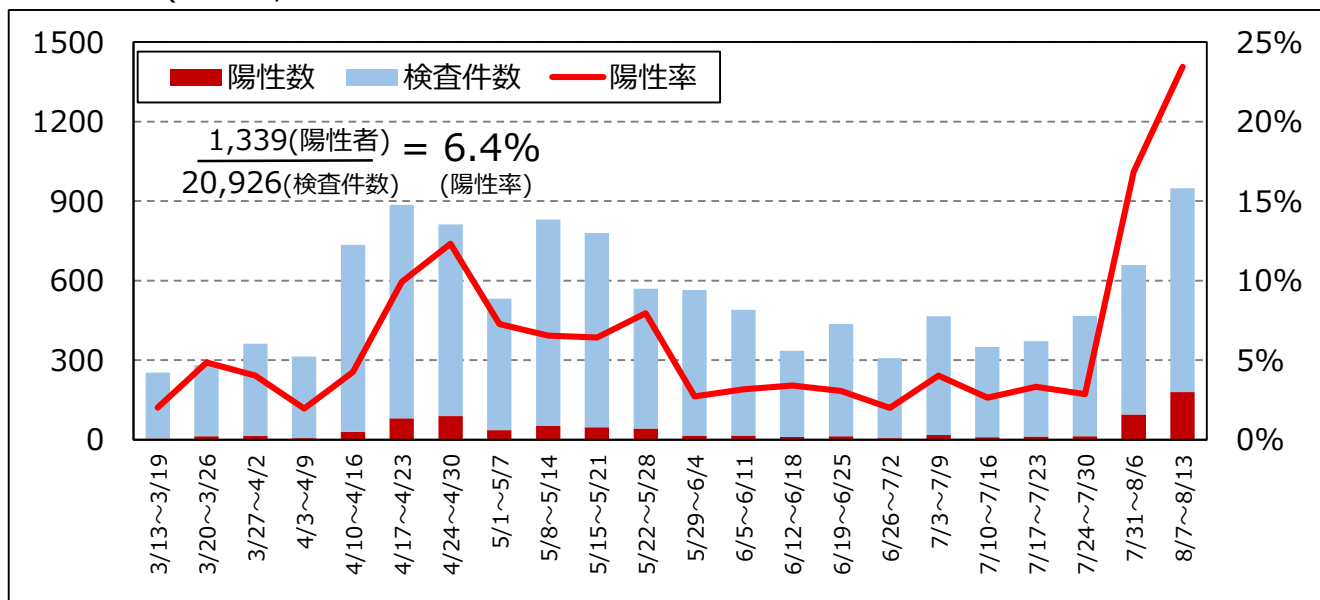


接触者検査陽性率 (n= 11,456)

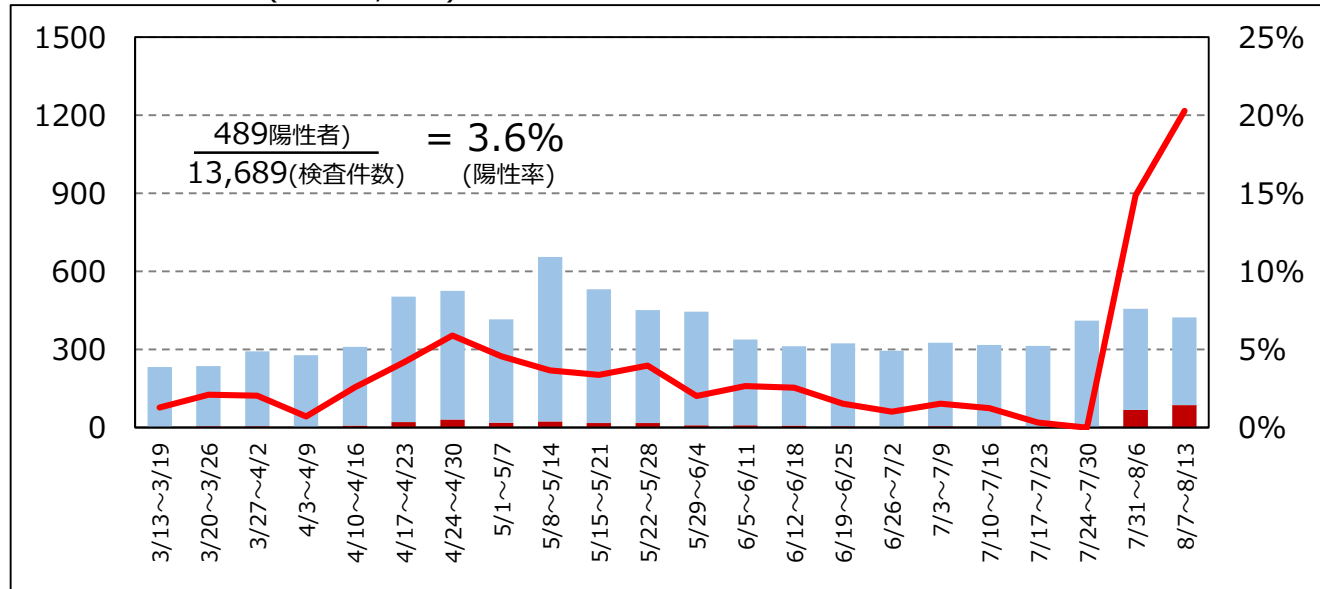


鈴鹿保健所管内検査件数・陽性率 (n= 20,926)

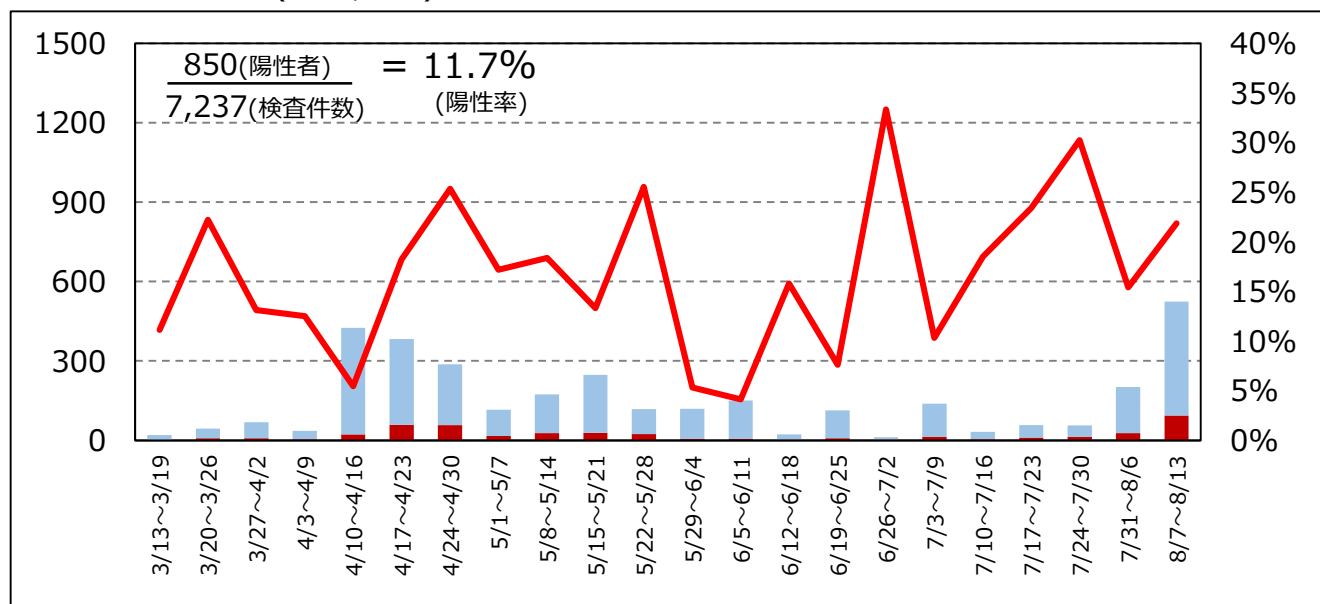
全体陽性率(n= 20,926)



疑い例検査陽性率 (n= 13,689)

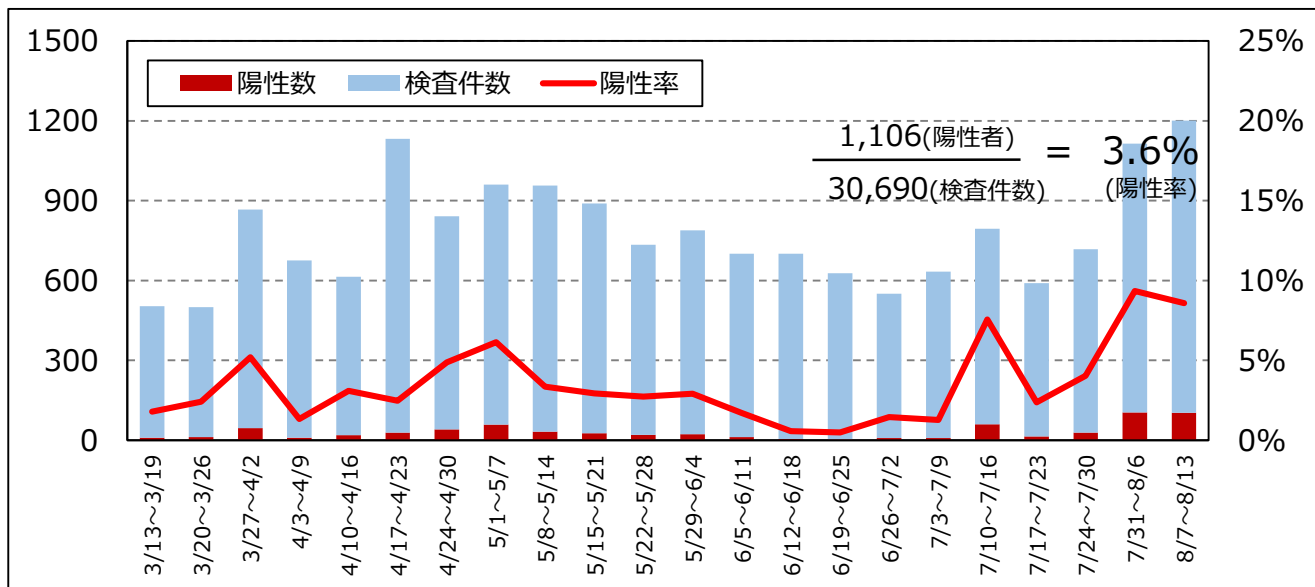


接触者検査陽性率 (n=7,237)

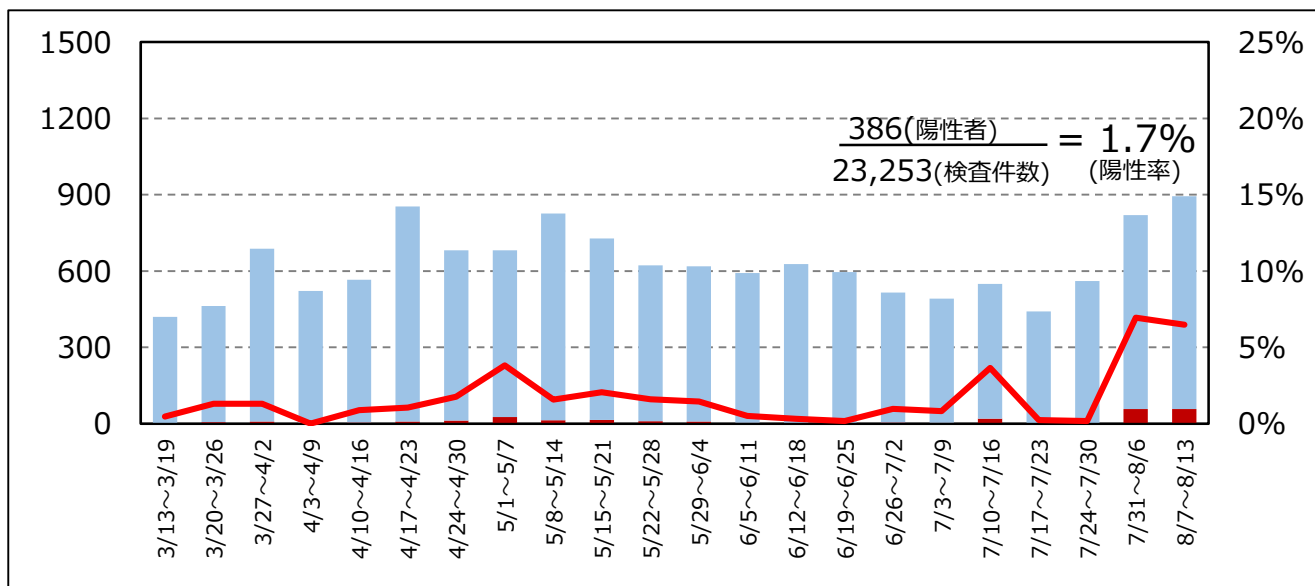


津保健所管内検査件数・陽性率 (n=30,690)

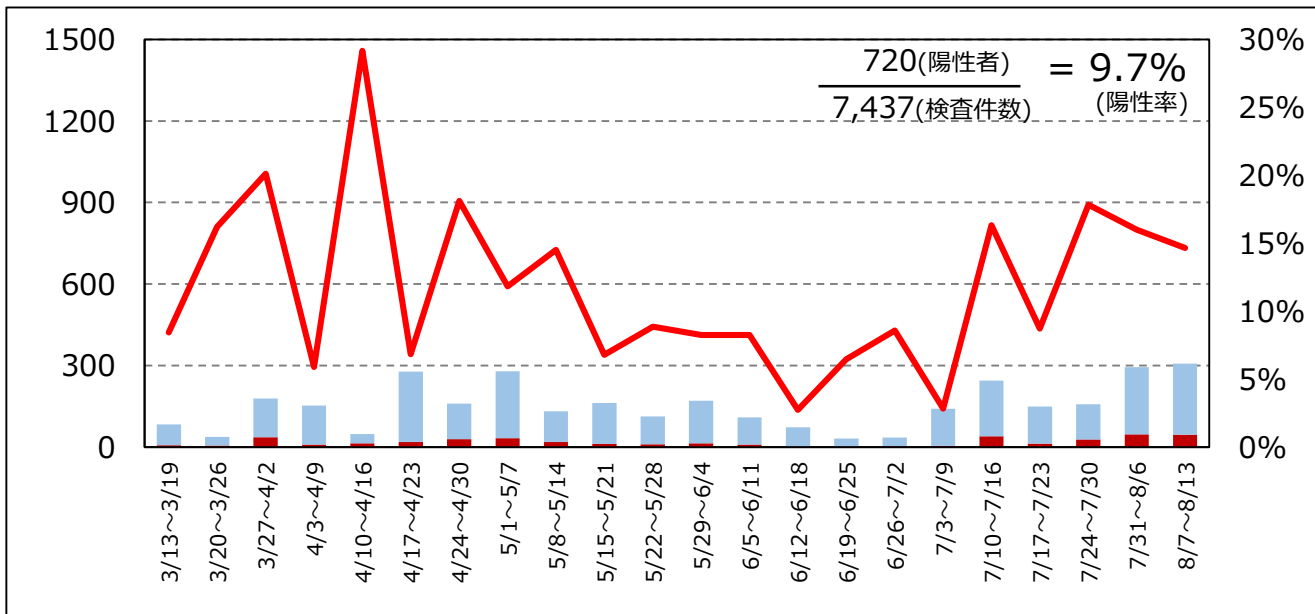
全体陽性率(n=30,690)



疑い例検査陽性率 (n= 23,253)

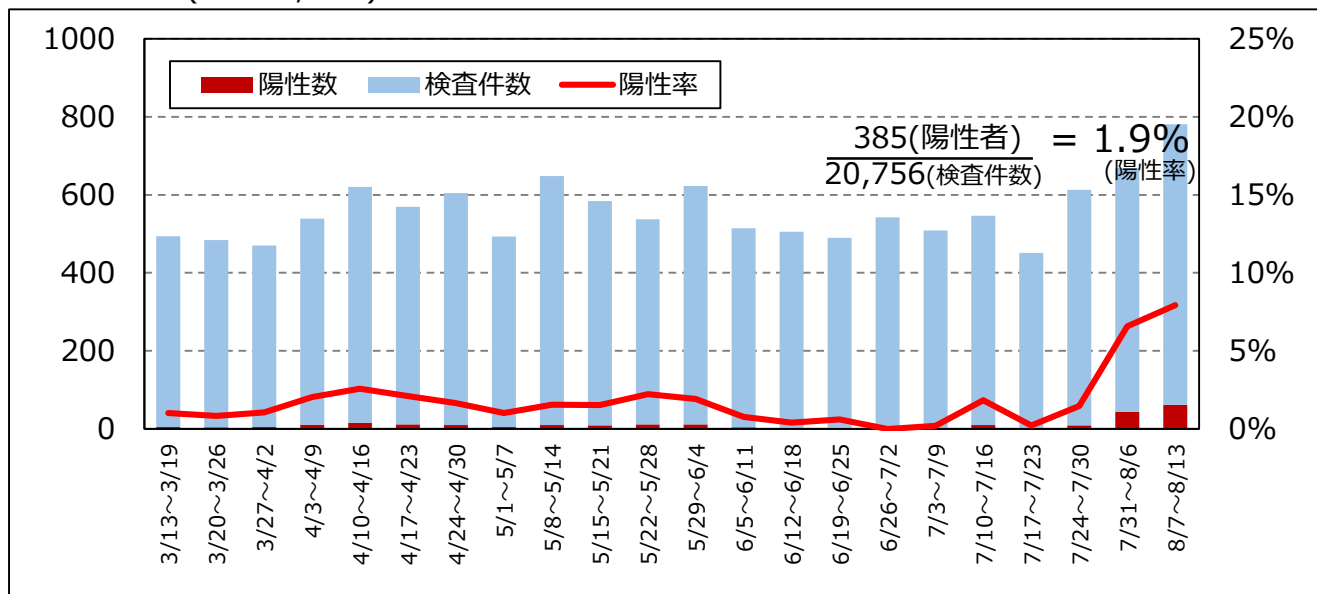


接触者検査陽性率 (n=7,437)

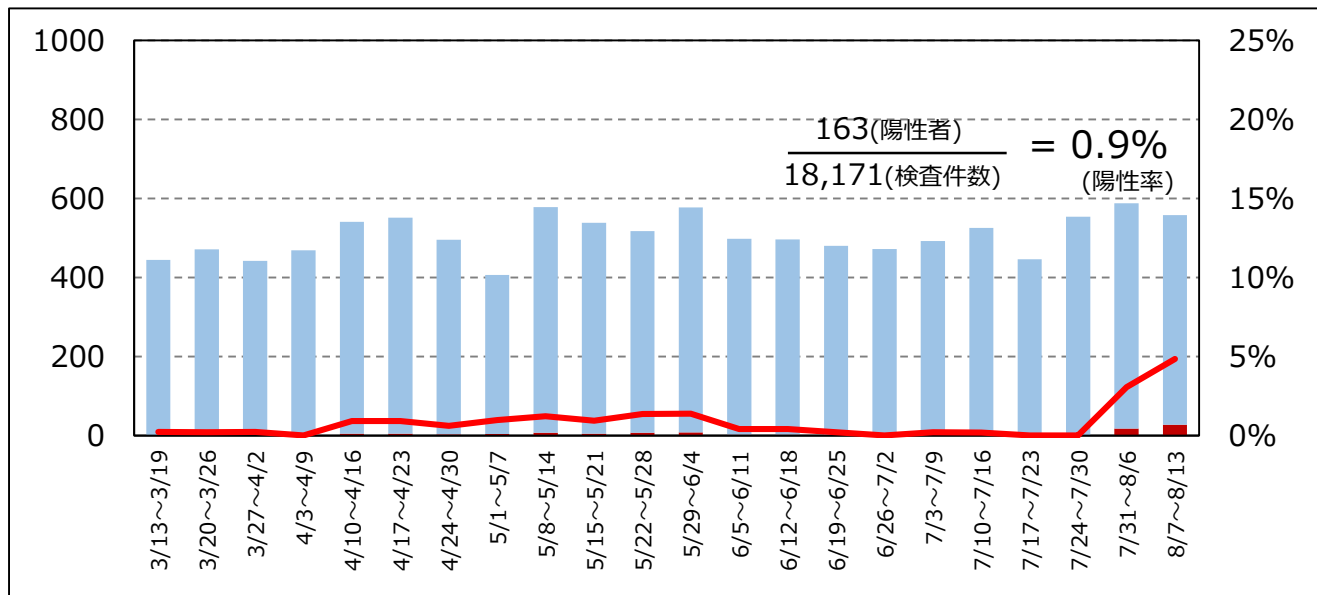


松阪保健所管内検査件数・陽性率 (n= 20,756)

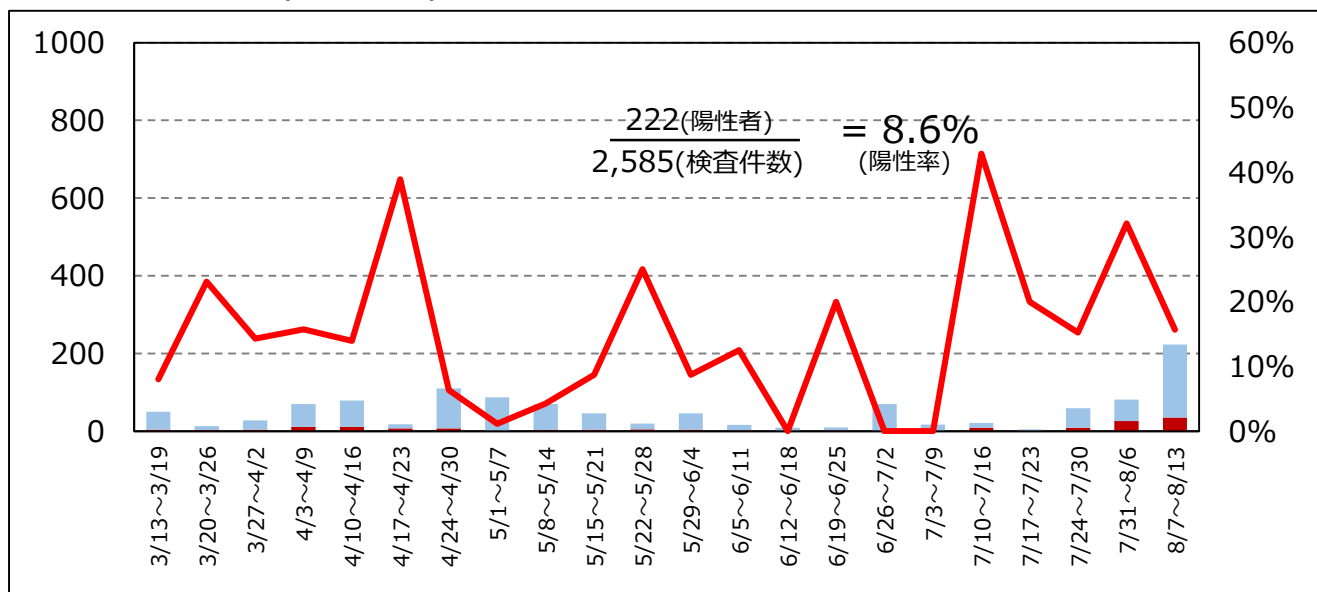
全体陽性率 (n= 20,756)



疑い例検査陽性率 (n=18,171)

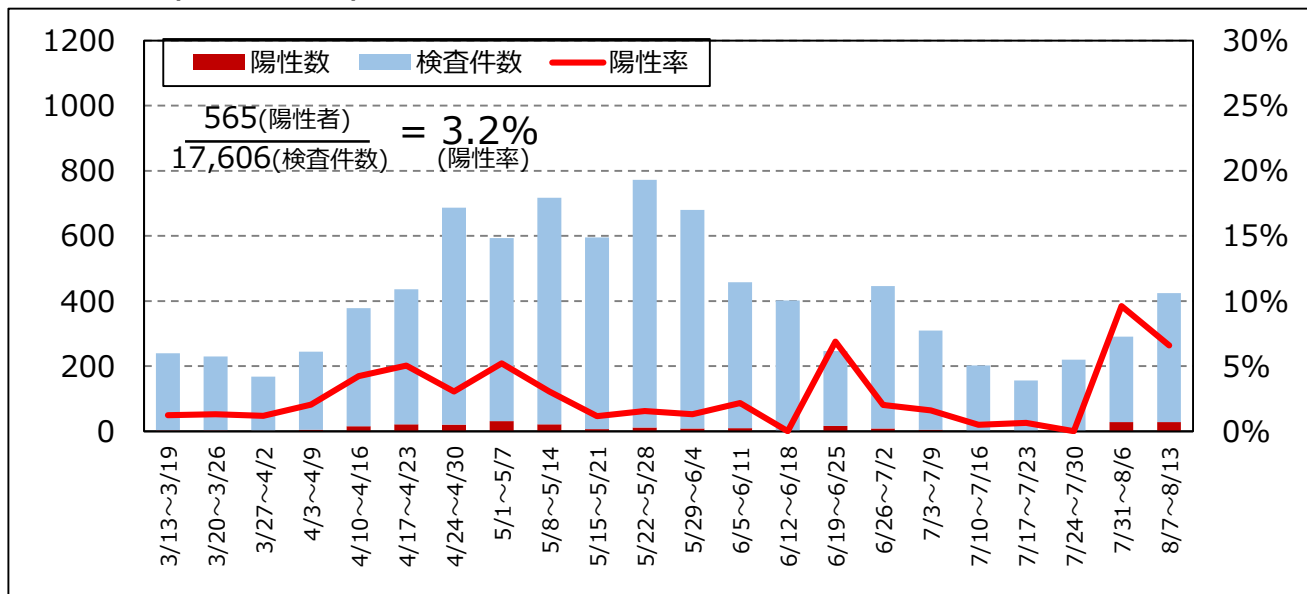


接触者検査陽性率 (n=2,585)

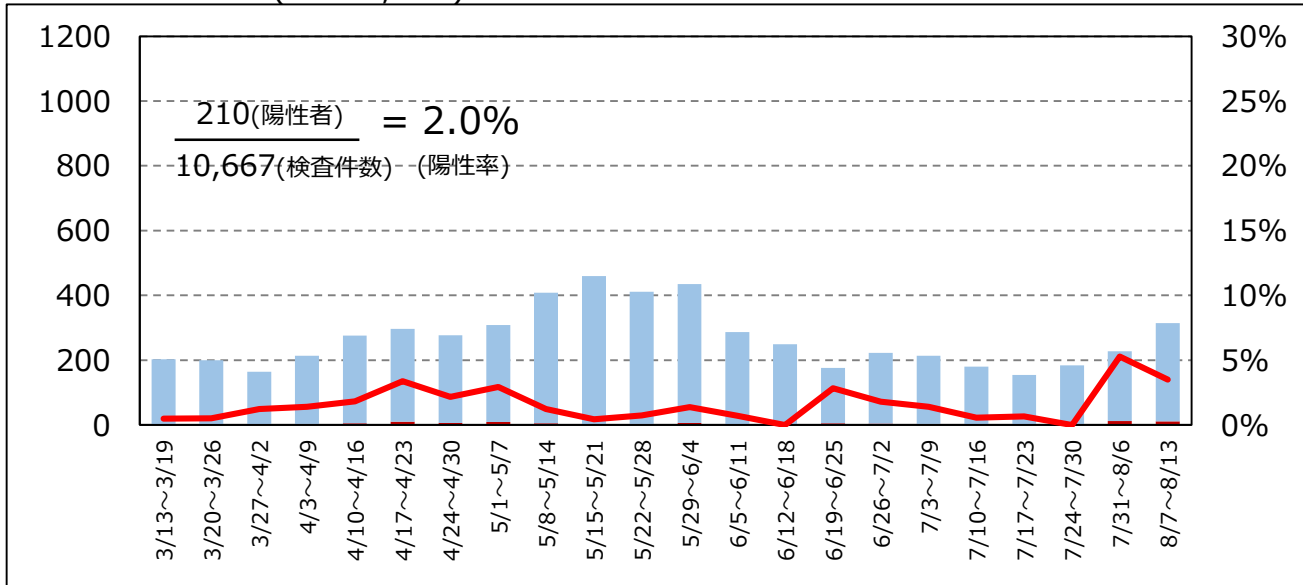


伊勢保健所管内検査件数・陽性率 (n= 17,606)

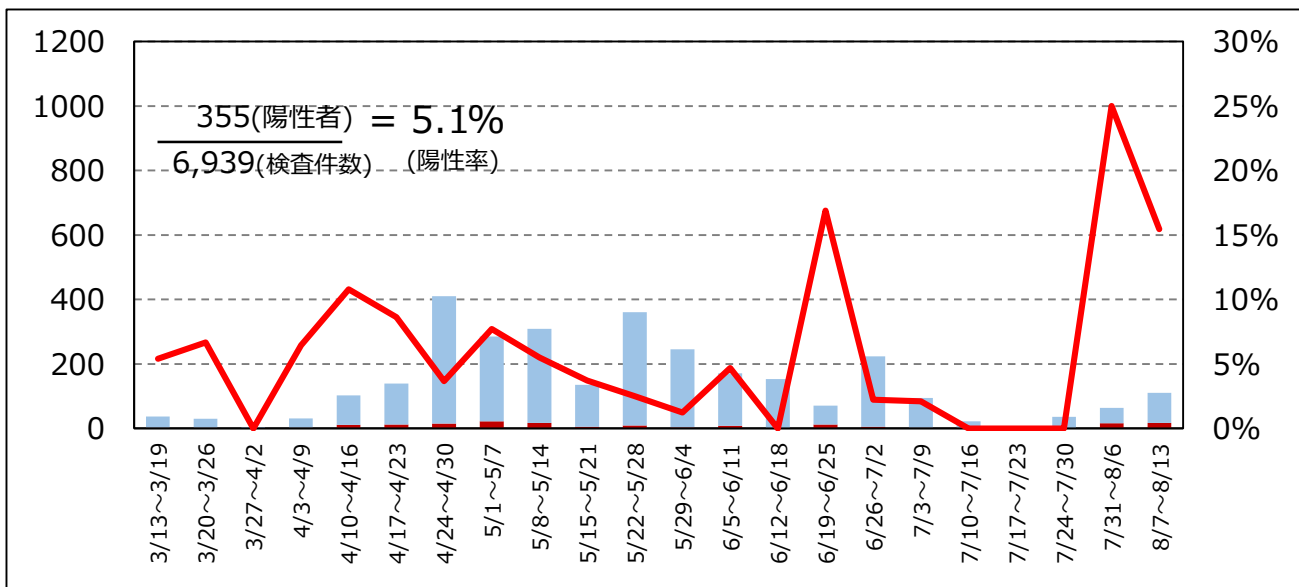
全体陽性率(n= 17,606)



疑い例検査陽性率 (n= 10,667)

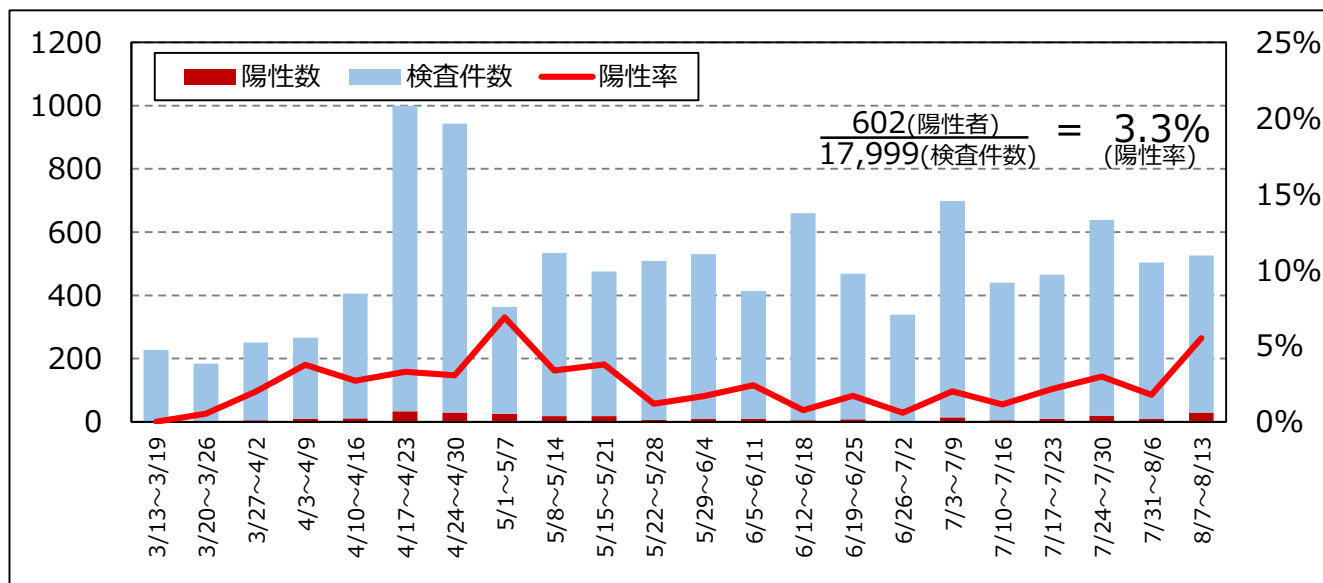


接触者検査陽性率 (n= 6,939)

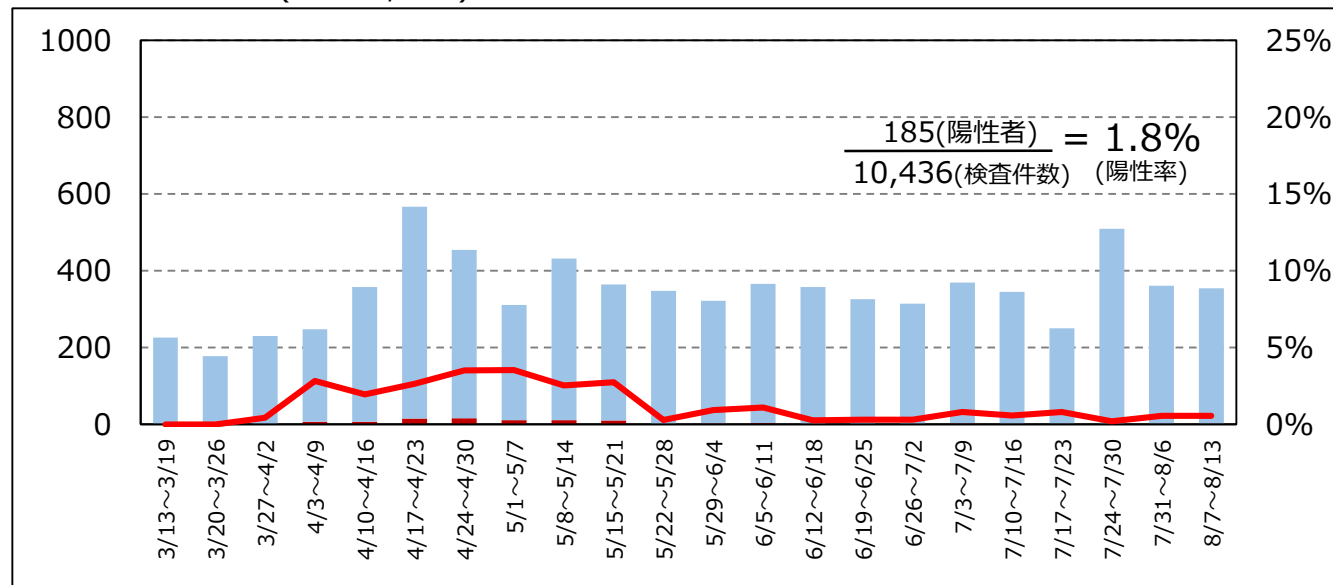


伊賀保健所管内検査件数・陽性率 (n= 17,999)

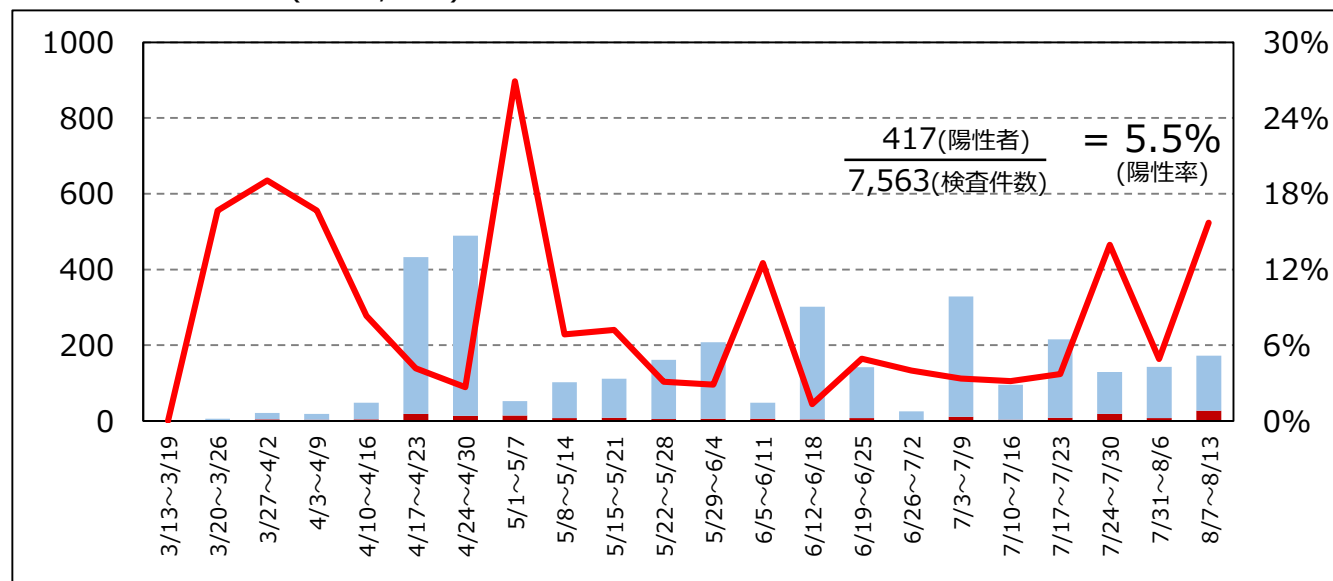
全体陽性率(n= 17,999)



疑い例検査陽性率 (n= 10,436)

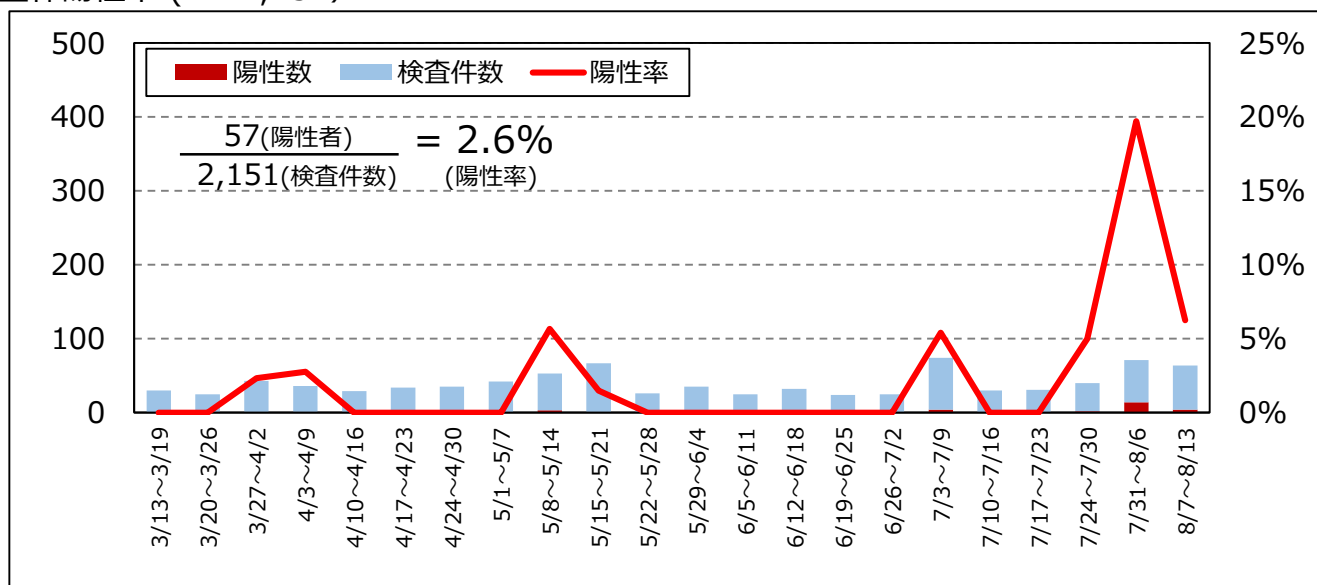


接触者検査陽性率 (n= 7,563)

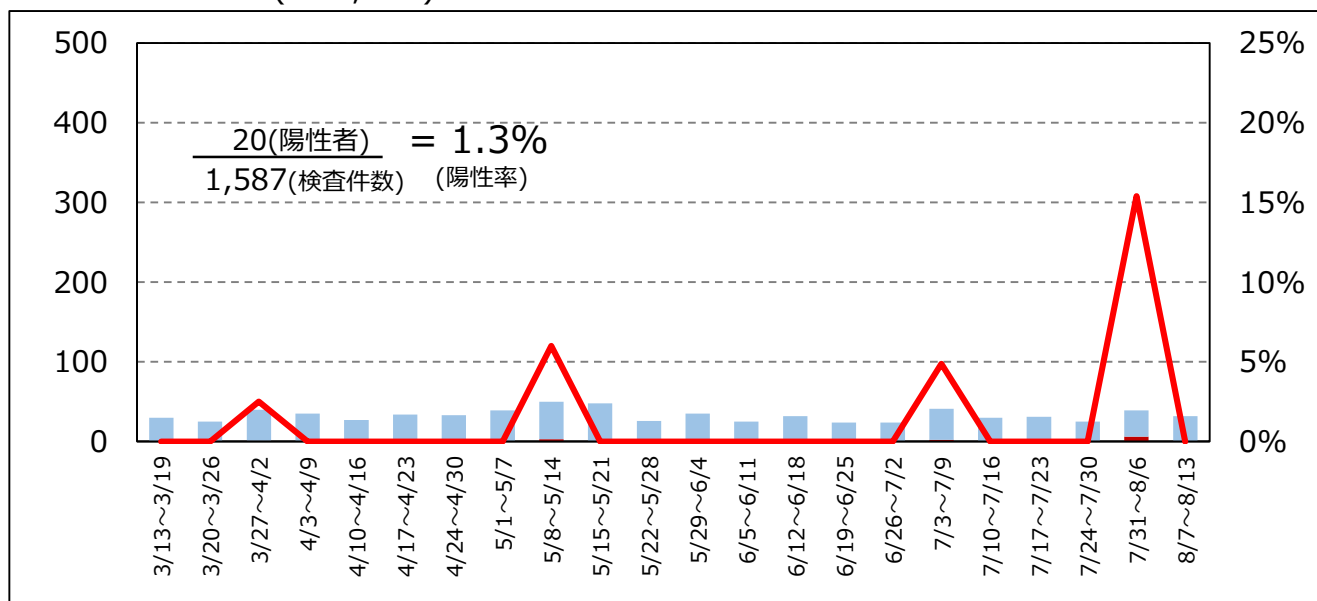


尾鷲保健所管内検査件数・陽性率 (n=2,151)

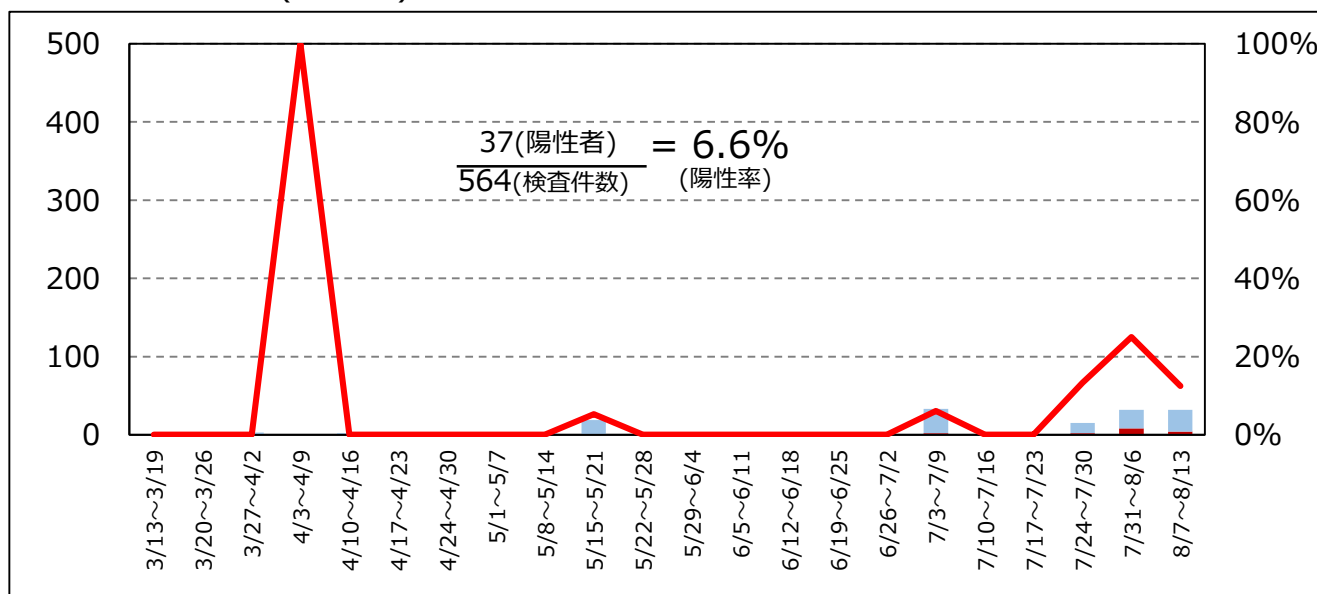
全体陽性率 (n= 2,151)



疑い例検査陽性率 (n=1,587)

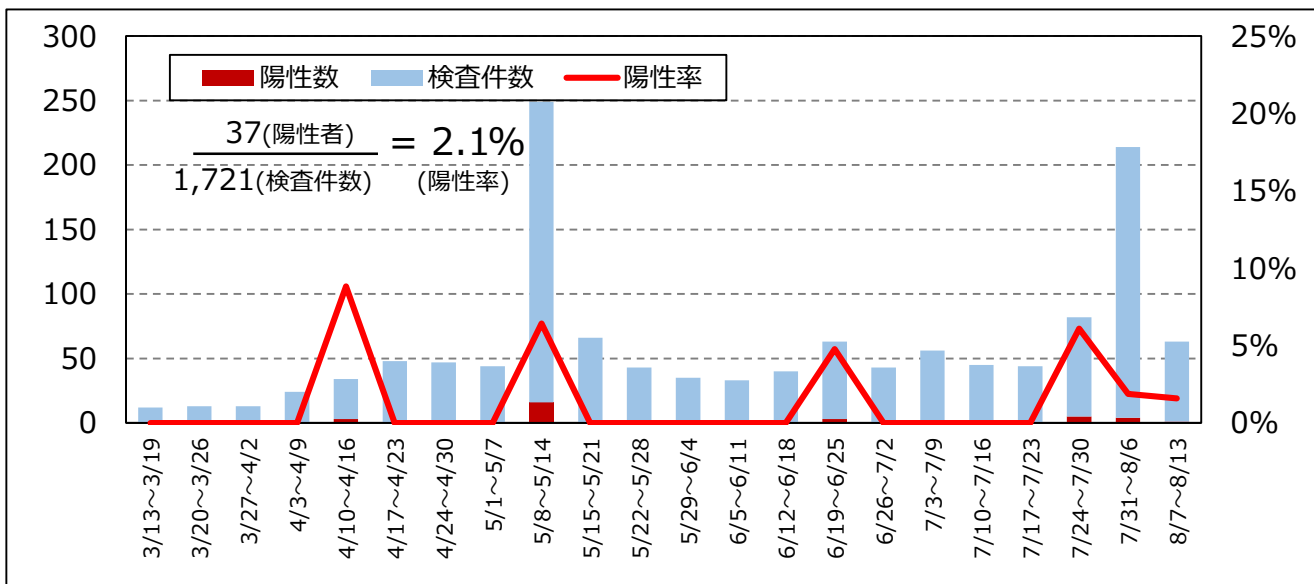


接触者検査陽性率 (n=564)

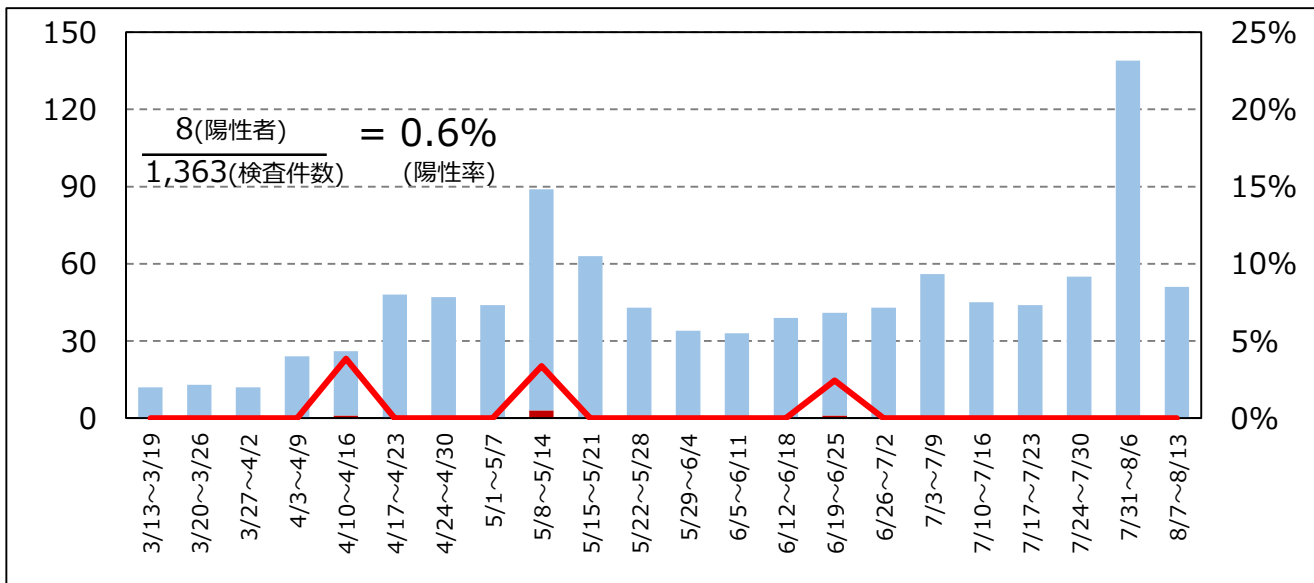


熊野保健所管内検査件数・陽性率 (n=1,721)

全体陽性率(n= 1,721)



疑い例検査陽性率 (n=1,363)



接触者検査陽性率 (n= 358)

