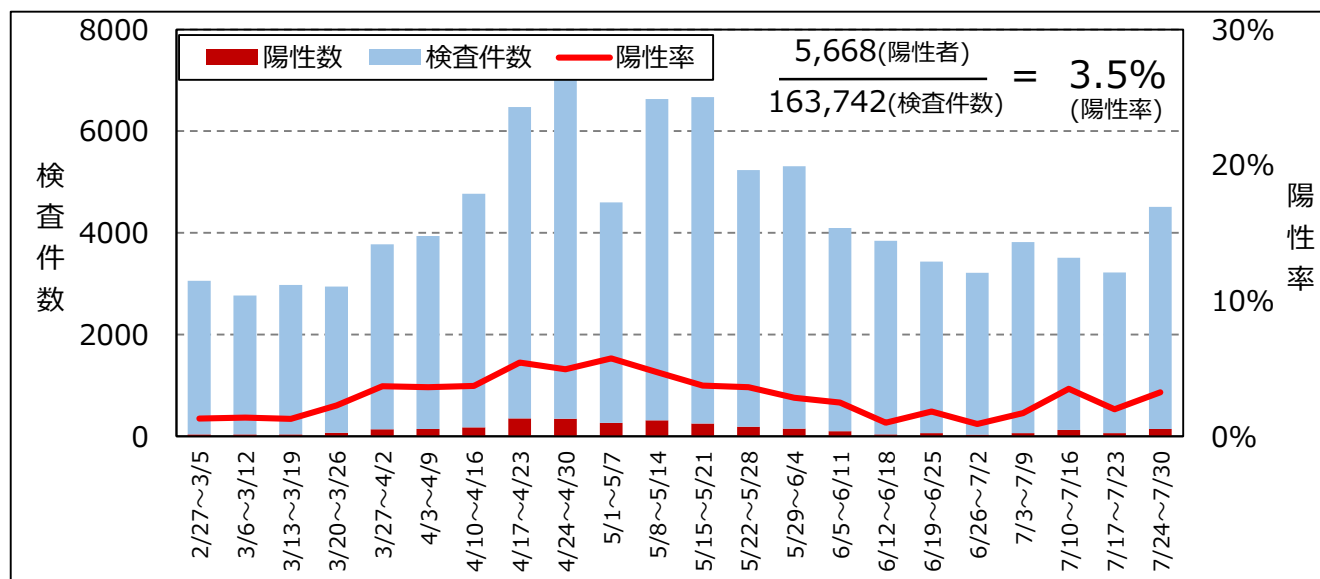


# 県内PCR等検査件数・陽性率 (R3.7.30時点 n= 163,742)

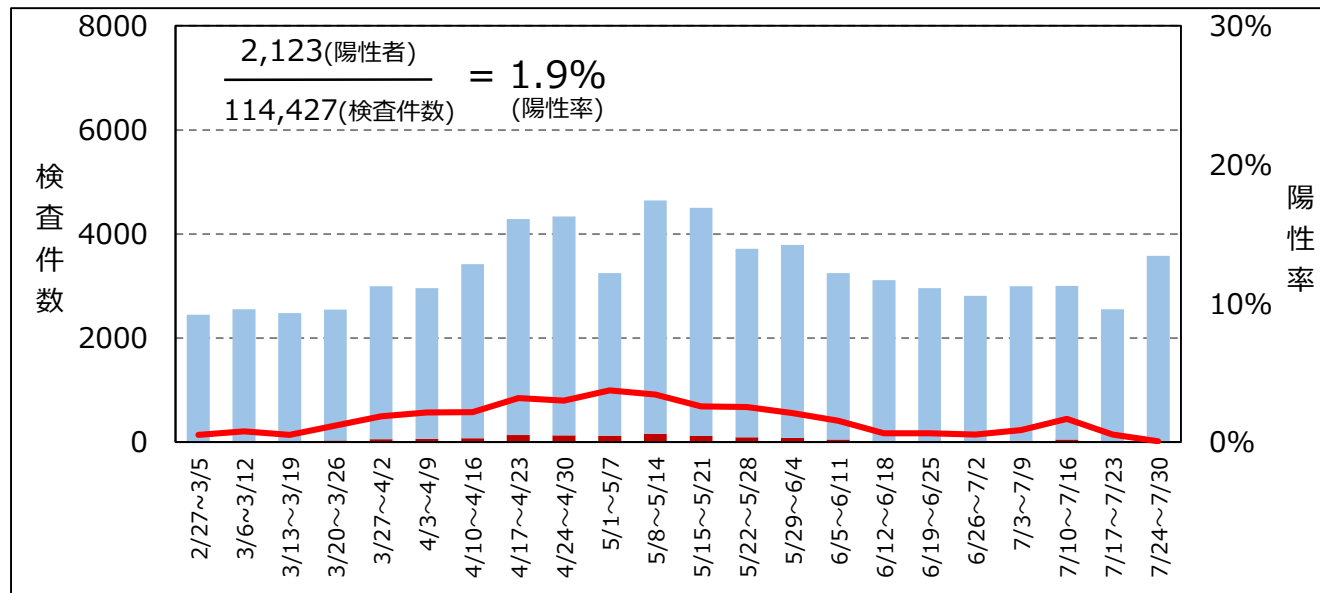
全体陽性率 (n= 163,742)

※陰性確認のための検査を除く



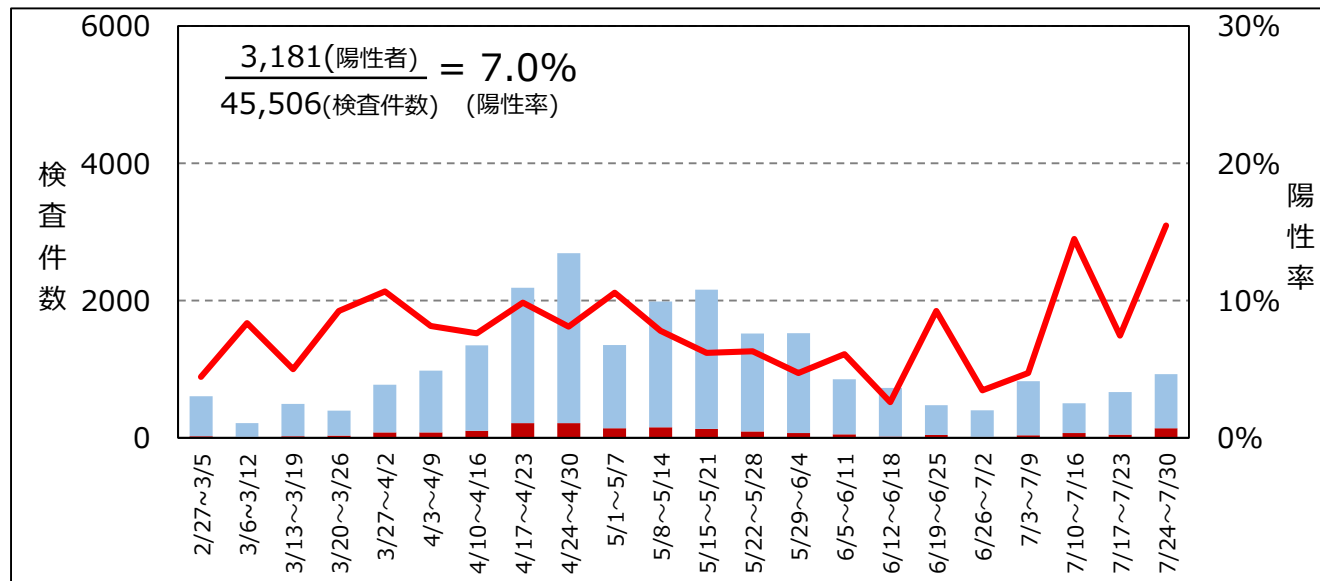
疑い例検査陽性率 (n=114,427)

※疑い例検査…疑い例として診断され、実施した検査



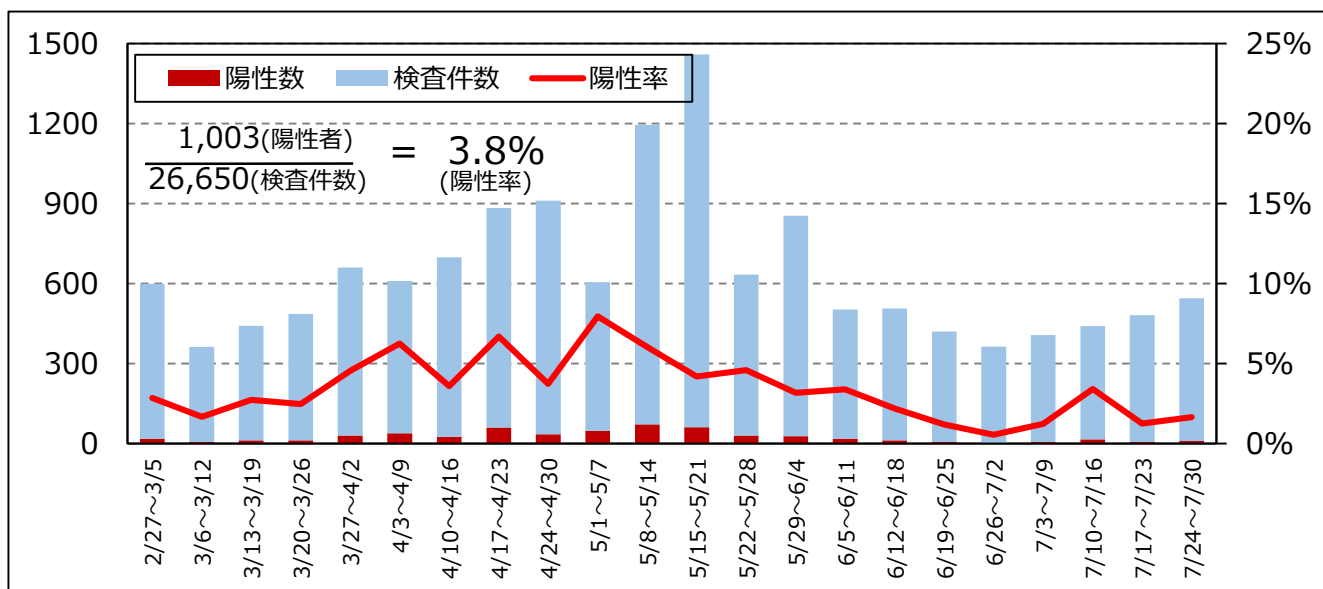
接触者検査陽性率 (n= 45,506)

※接触者検査…接触者調査の一環で実施した検査

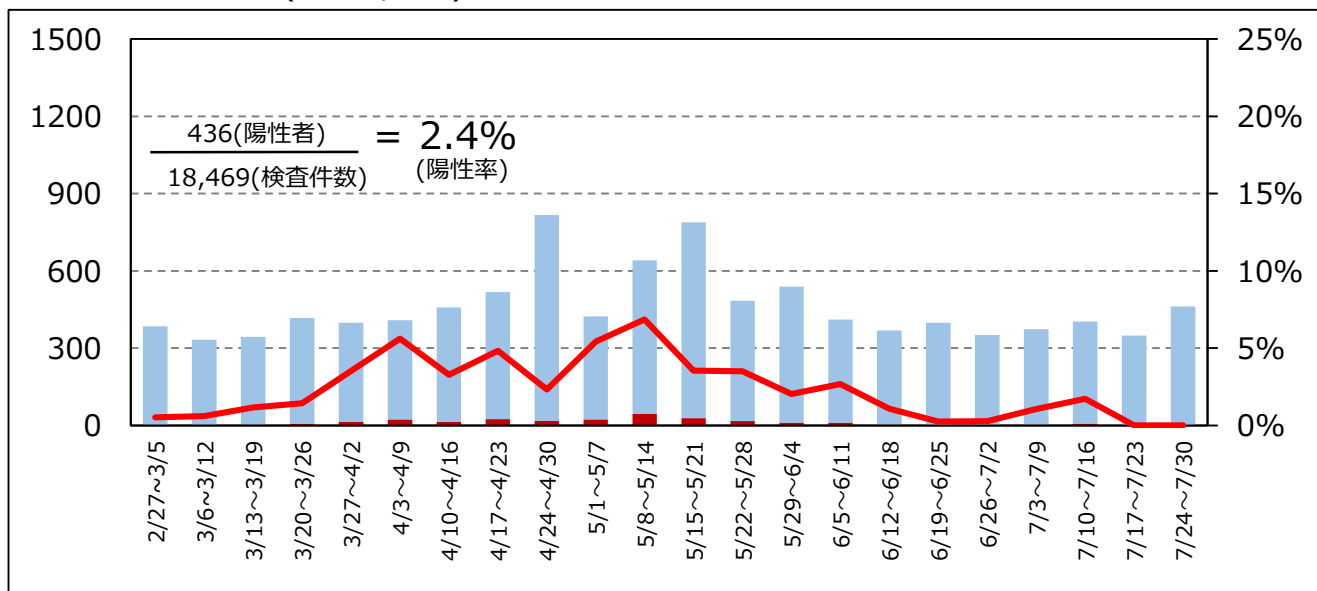


# 桑名保健所管内検査件数・陽性率 (n=26,650)

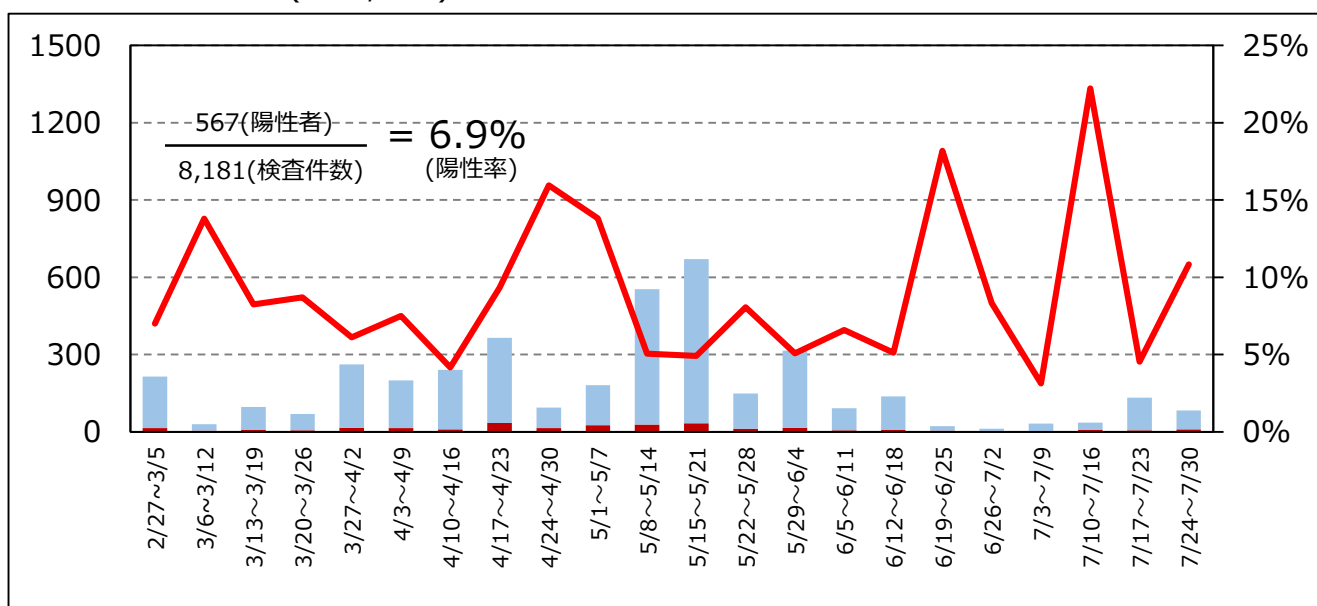
全体陽性率(n=26,650)



疑い例検査陽性率 (n=18,469)

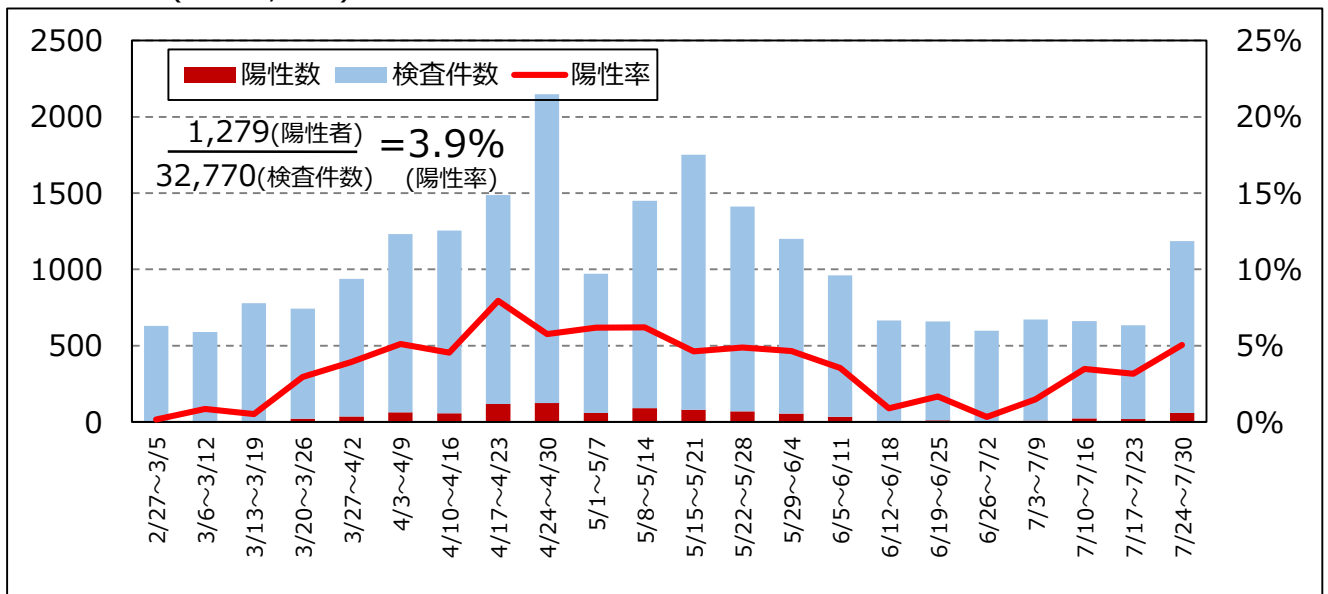


接触者検査陽性率 (n=8,181)

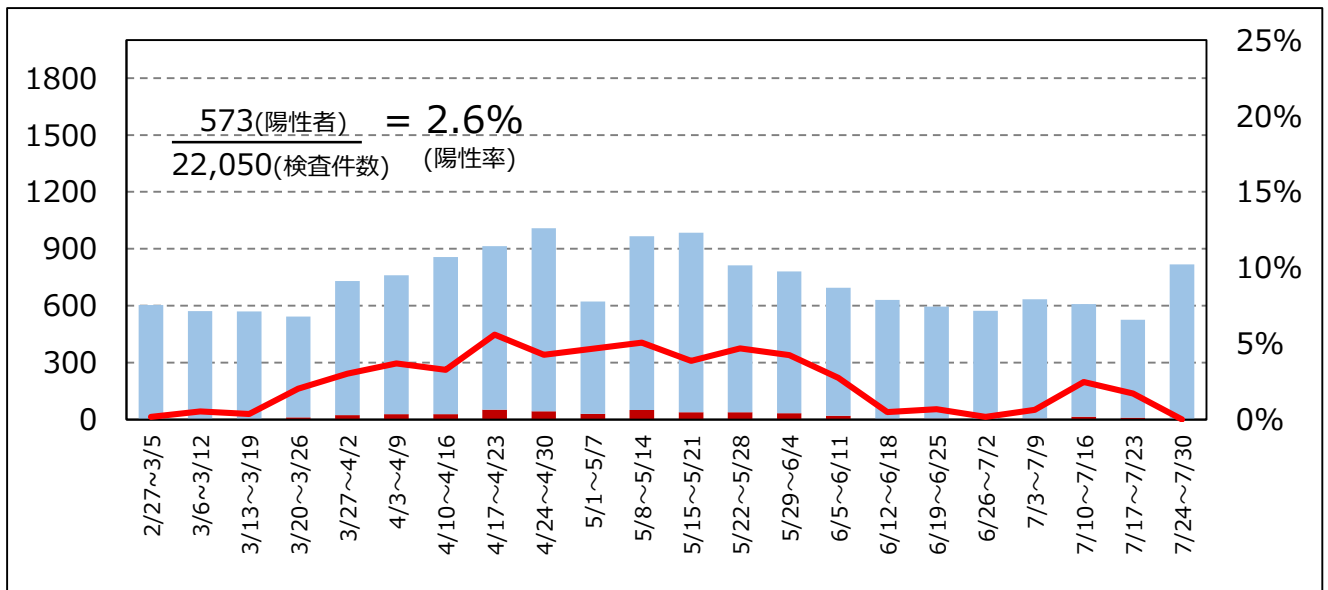


# 四日市市保健所管内検査件数・陽性率 (n= 32,770)

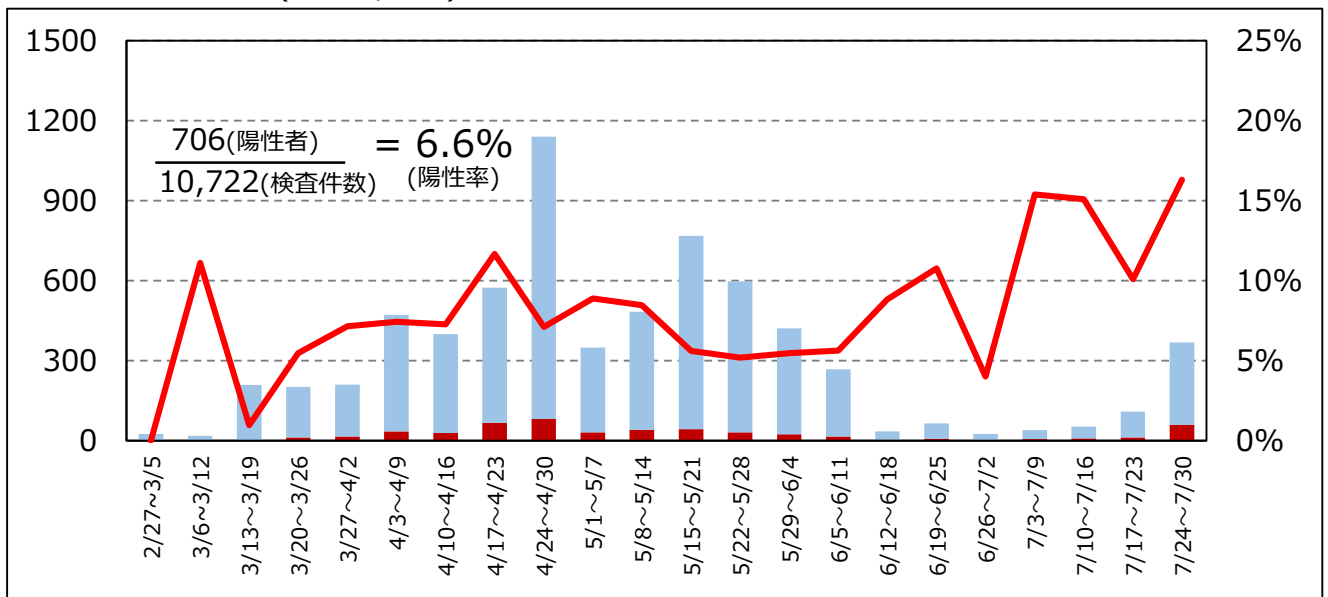
全体陽性率 (n=32,770)



疑い例検査陽性率 (n=22,050)

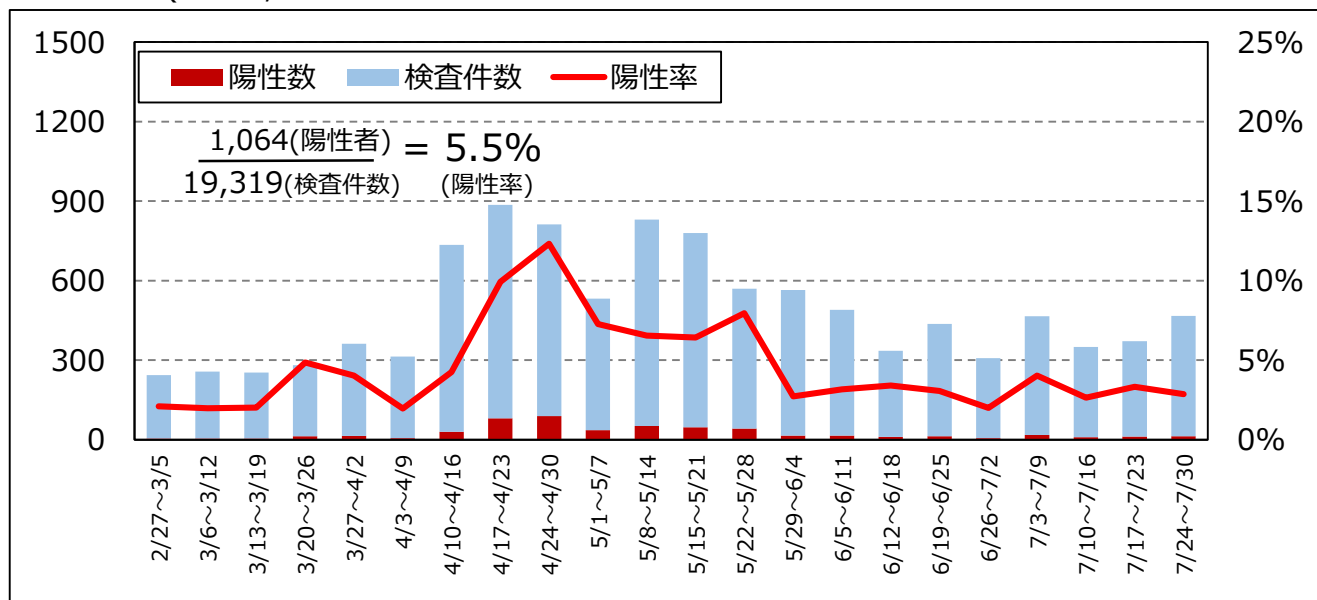


接触者検査陽性率 (n=10,722)

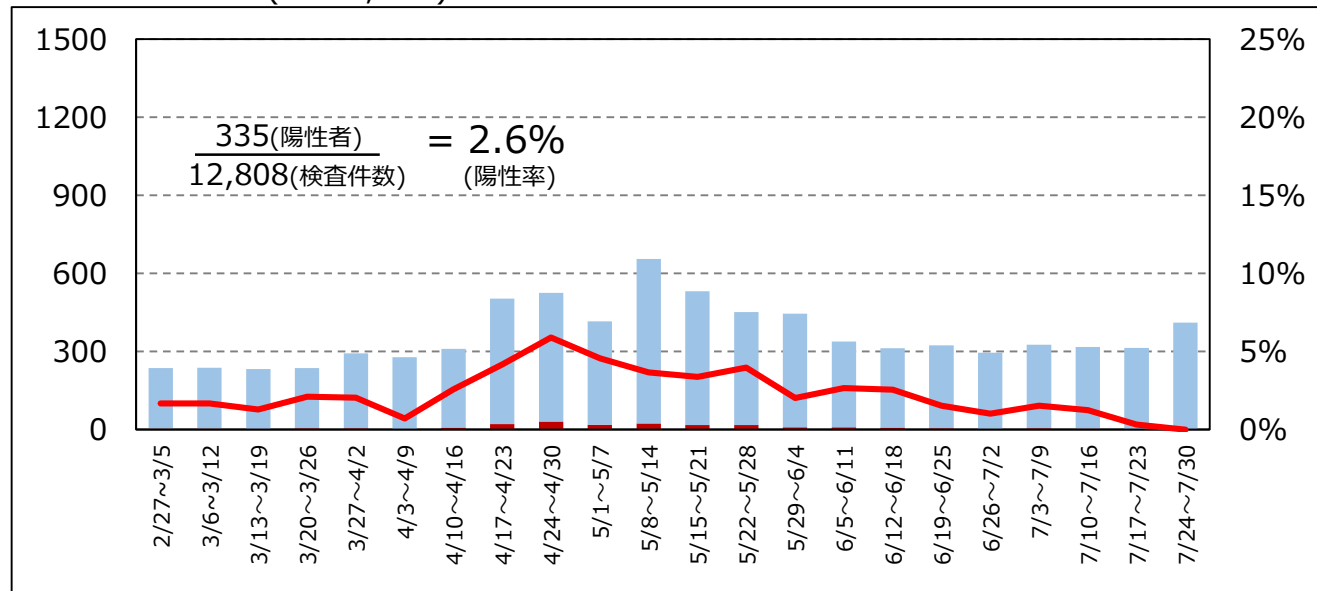


# 鈴鹿保健所管内検査件数・陽性率 (n= 19,319)

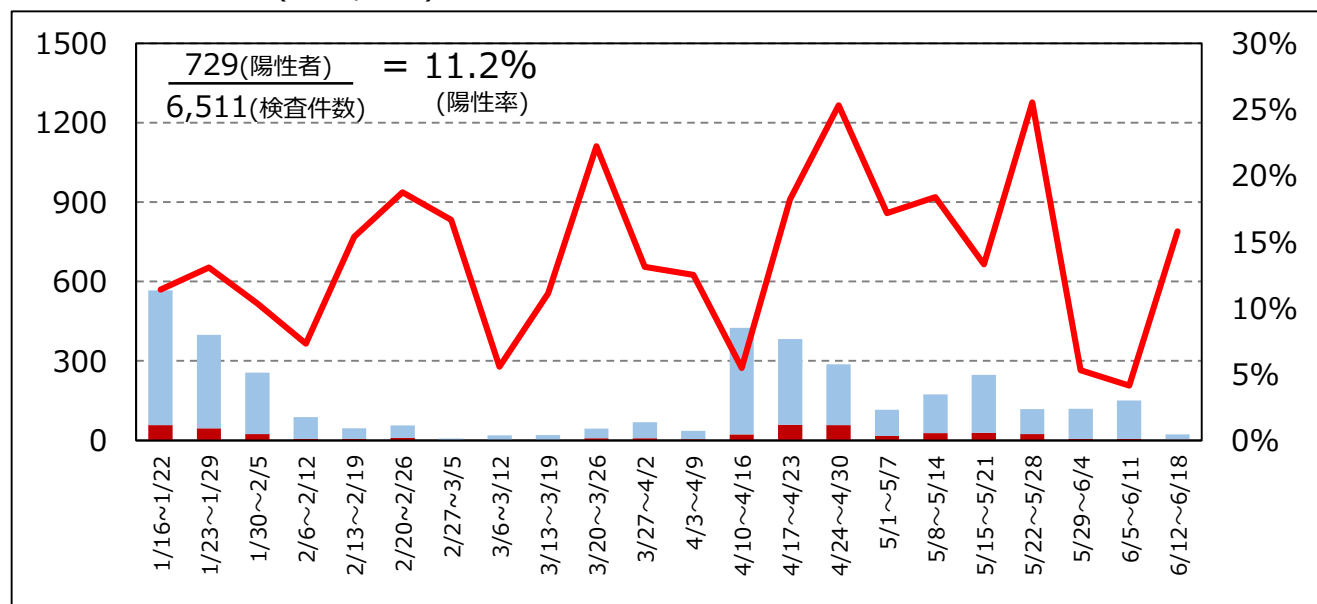
全体陽性率(n=19,319)



疑い例検査陽性率 (n=12,808)

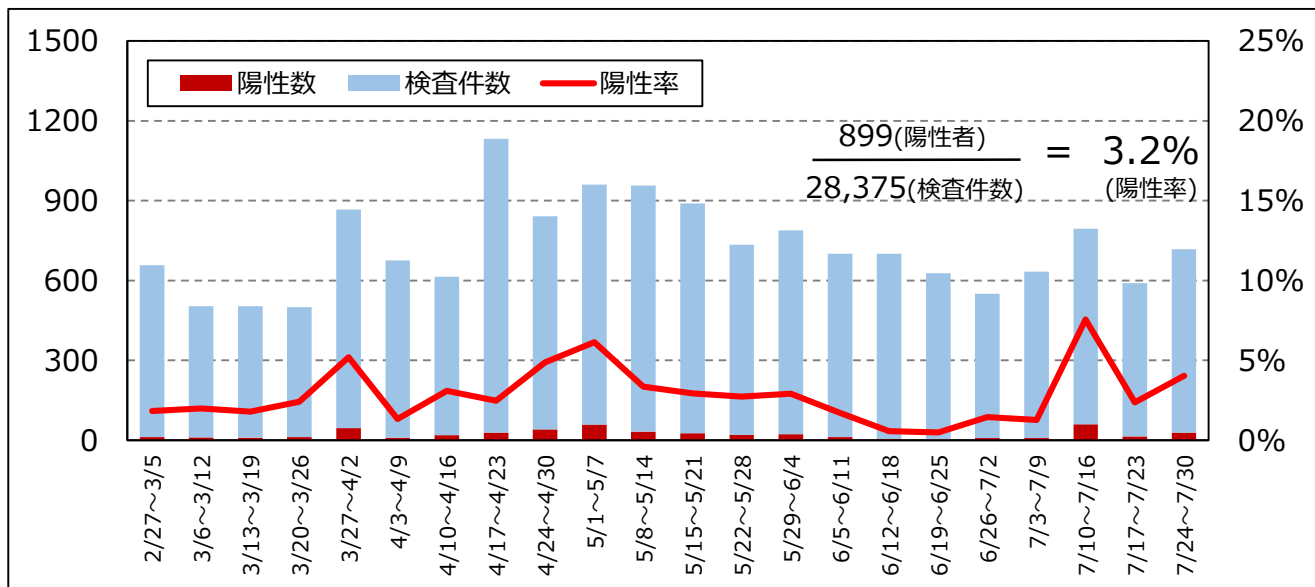


接触者検査陽性率 (n=6,511)

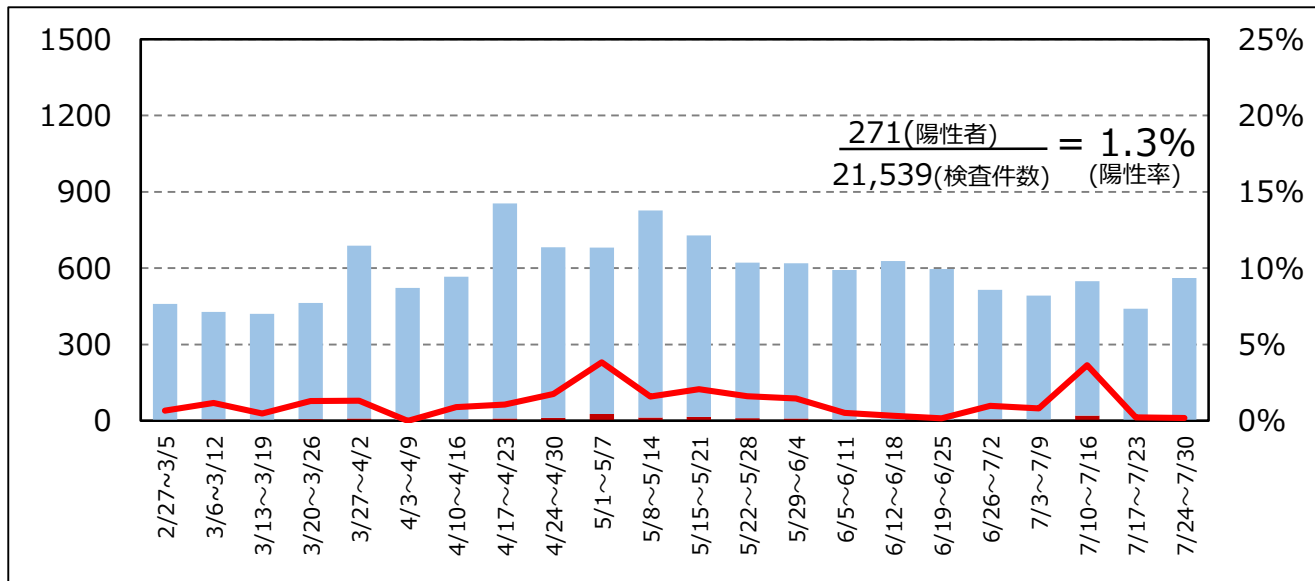


# 津保健所管内検査件数・陽性率 (n= 28,375)

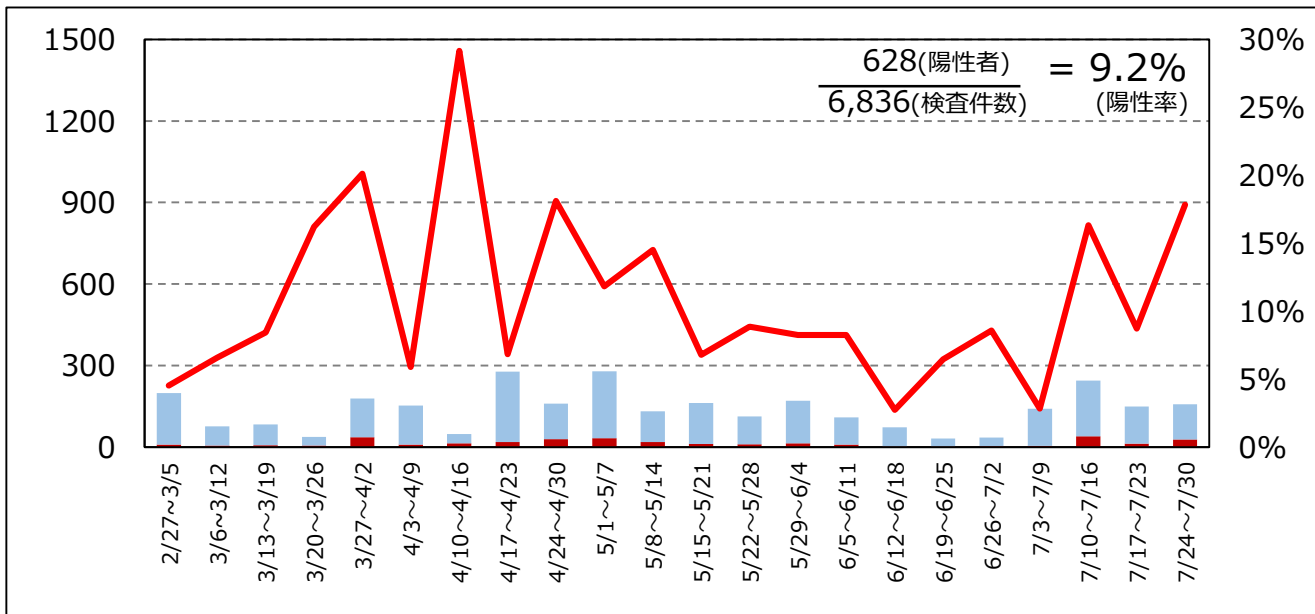
全体陽性率(n= 28,375)



疑い例検査陽性率 (n=21,539)

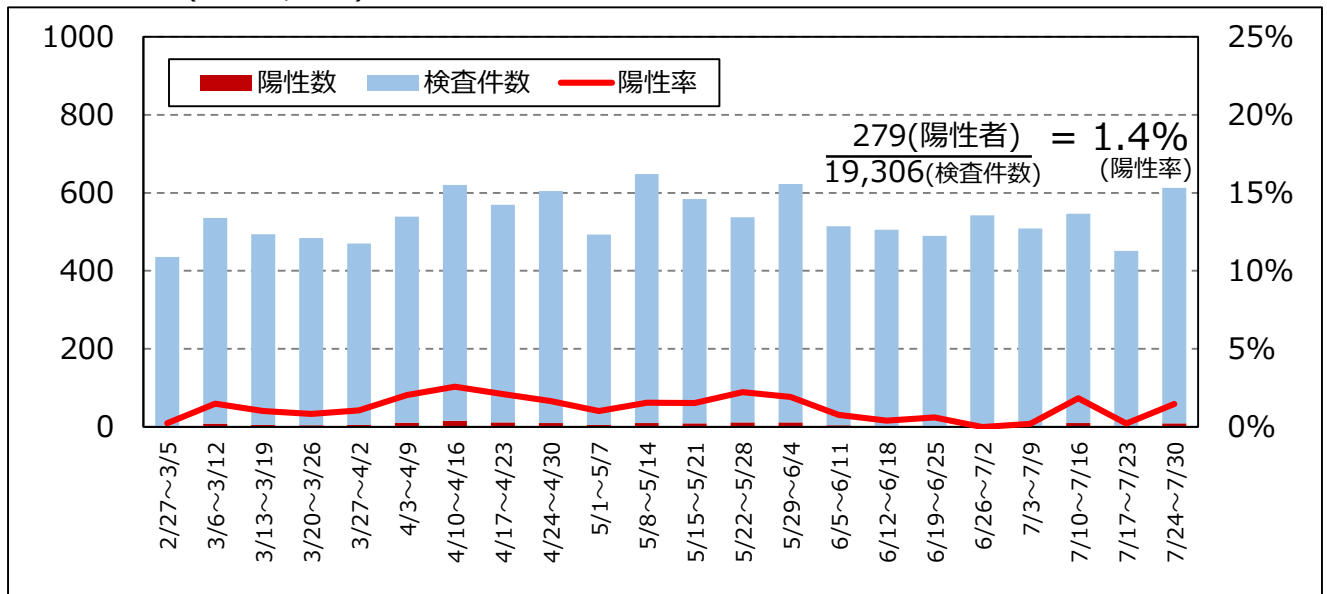


接触者検査陽性率 (n= 6,836)

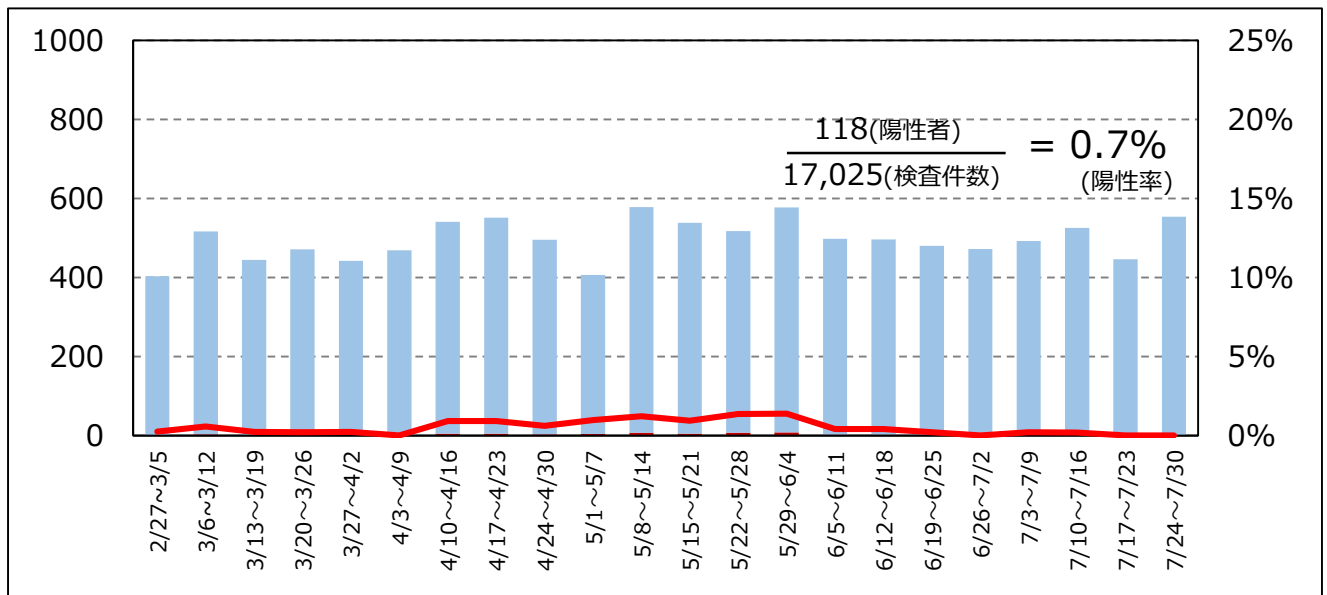


# 松阪保健所管内検査件数・陽性率 (n= 19,306)

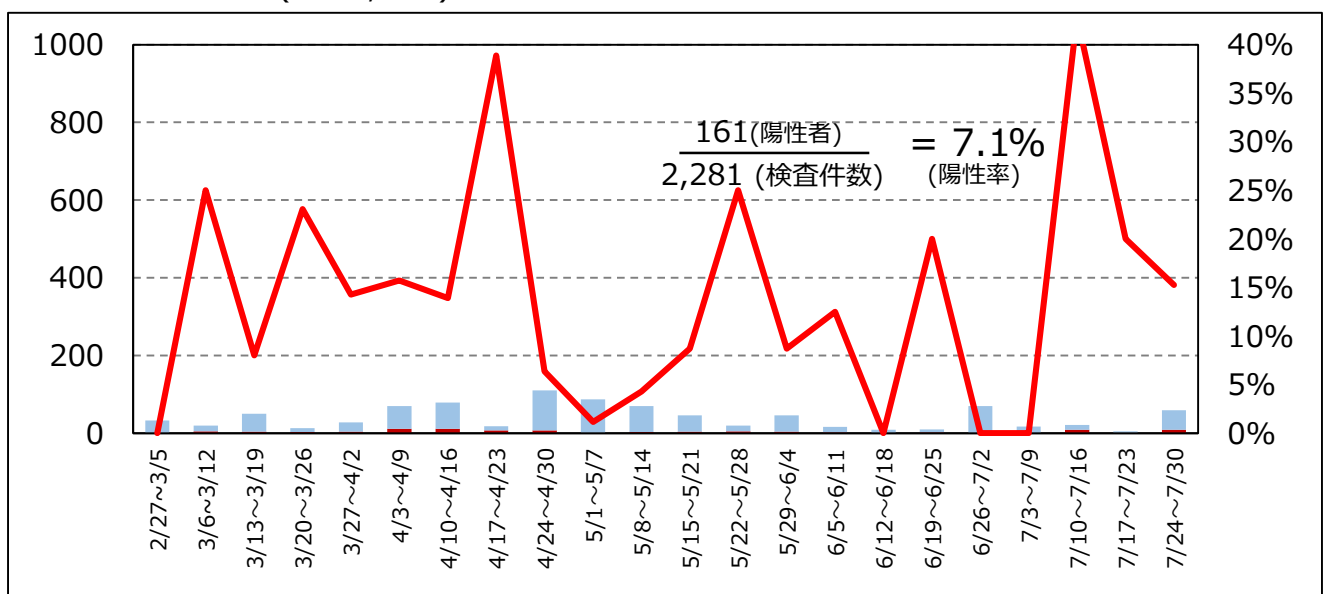
## 全体陽性率 (n=19,306)



## 疑い例検査陽性率 (n=17,025)

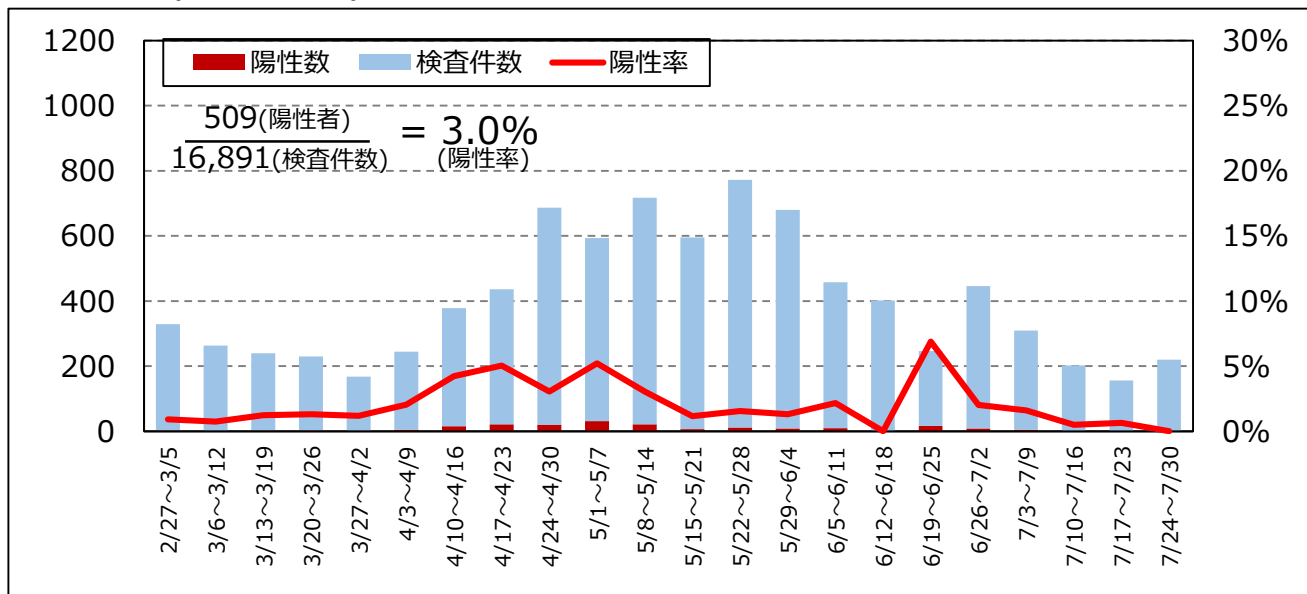


## 接触者検査陽性率 (n= 2,281)

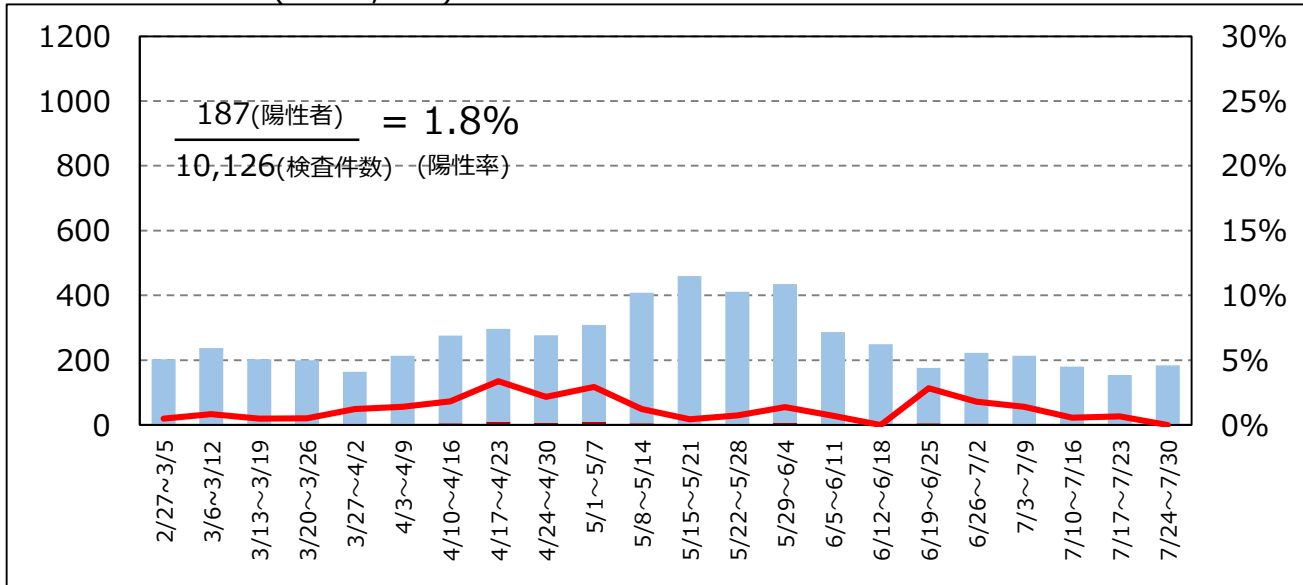


# 伊勢保健所管内検査件数・陽性率 (n= 16,891)

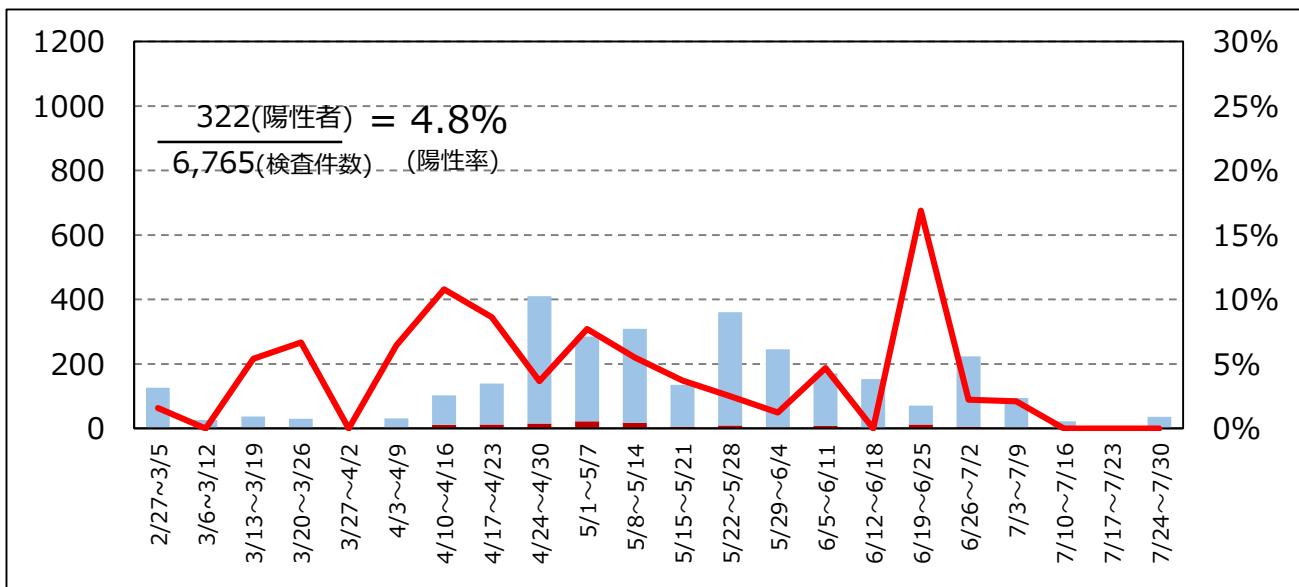
全体陽性率(n= 16,891)



疑い例検査陽性率 (n=10,126)

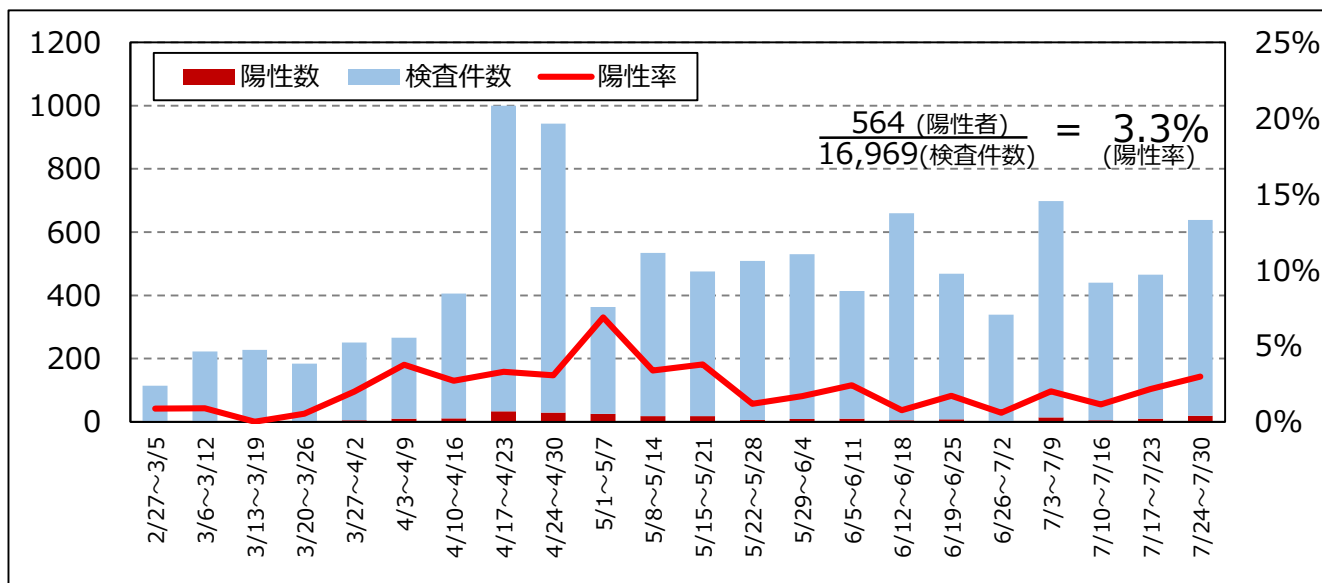


接触者検査陽性率 (n=6,765)

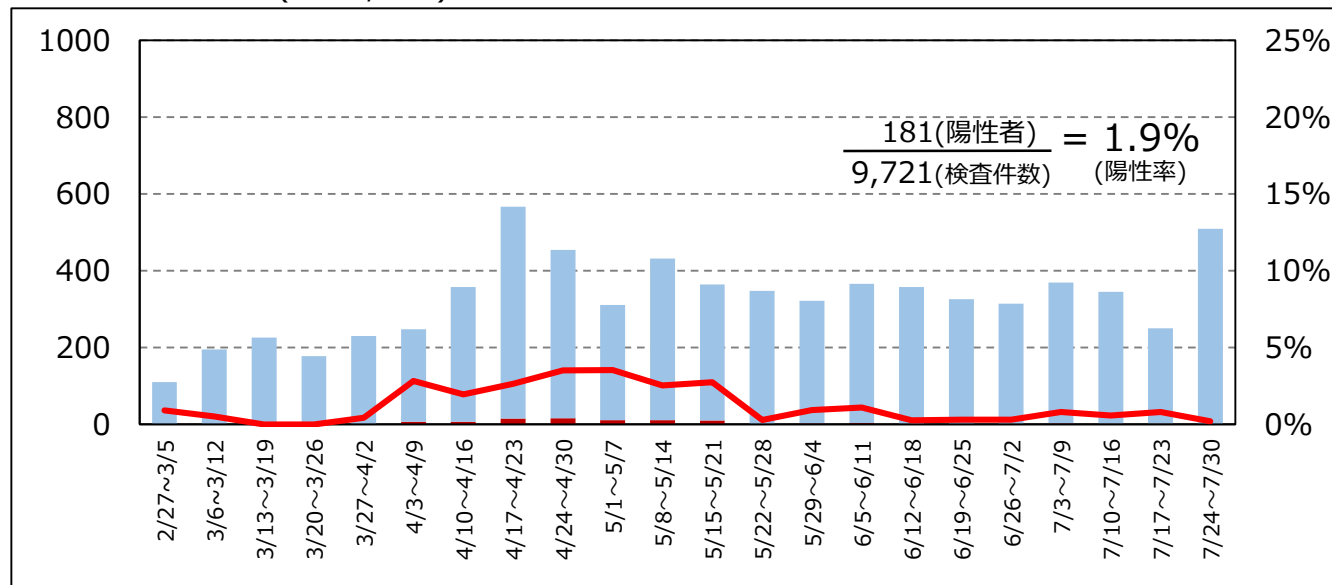


# 伊賀保健所管内検査件数・陽性率 (n= 16,969)

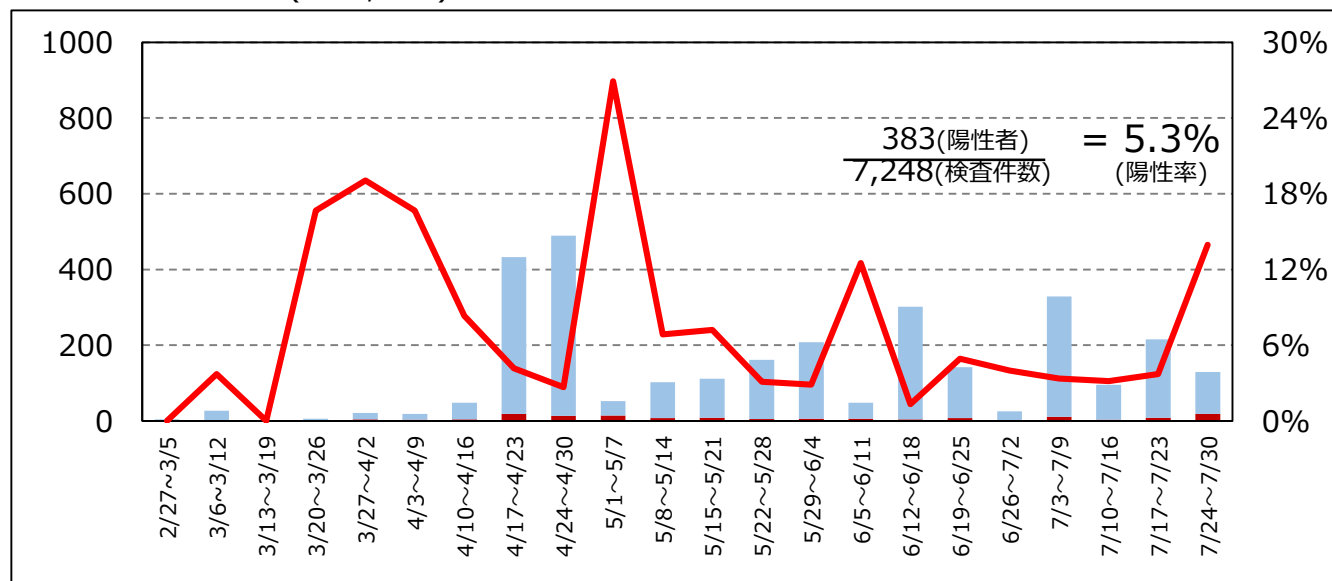
全体陽性率(n= 16,969)



疑い例検査陽性率 (n= 9,721)



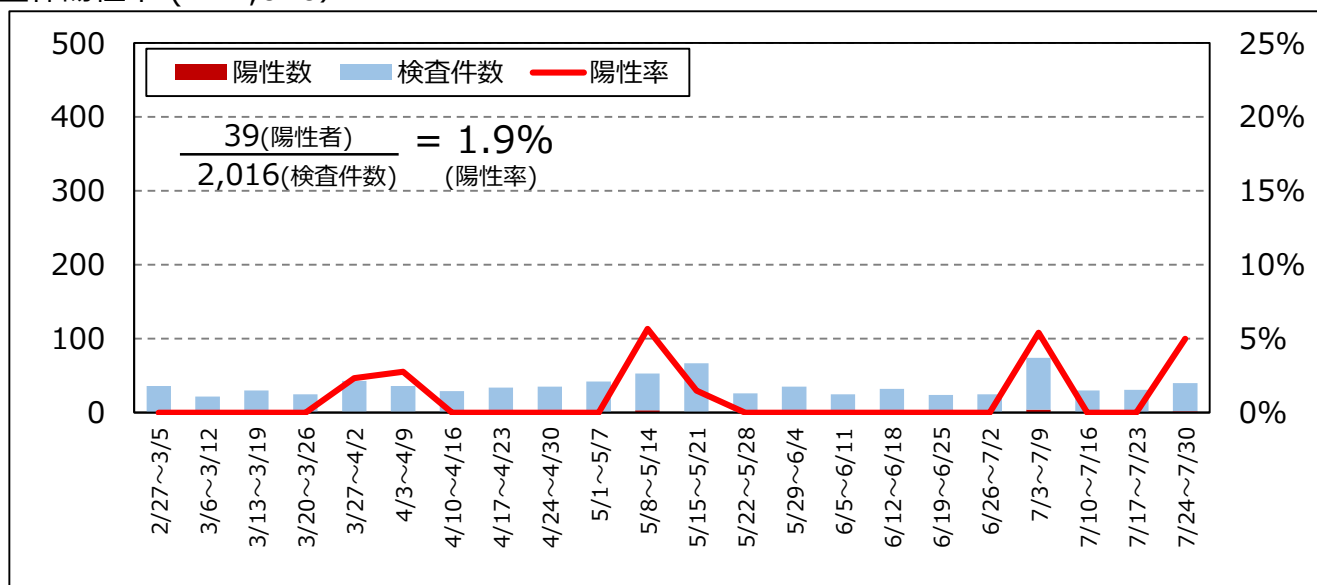
接触者検査陽性率 (n=7,248)



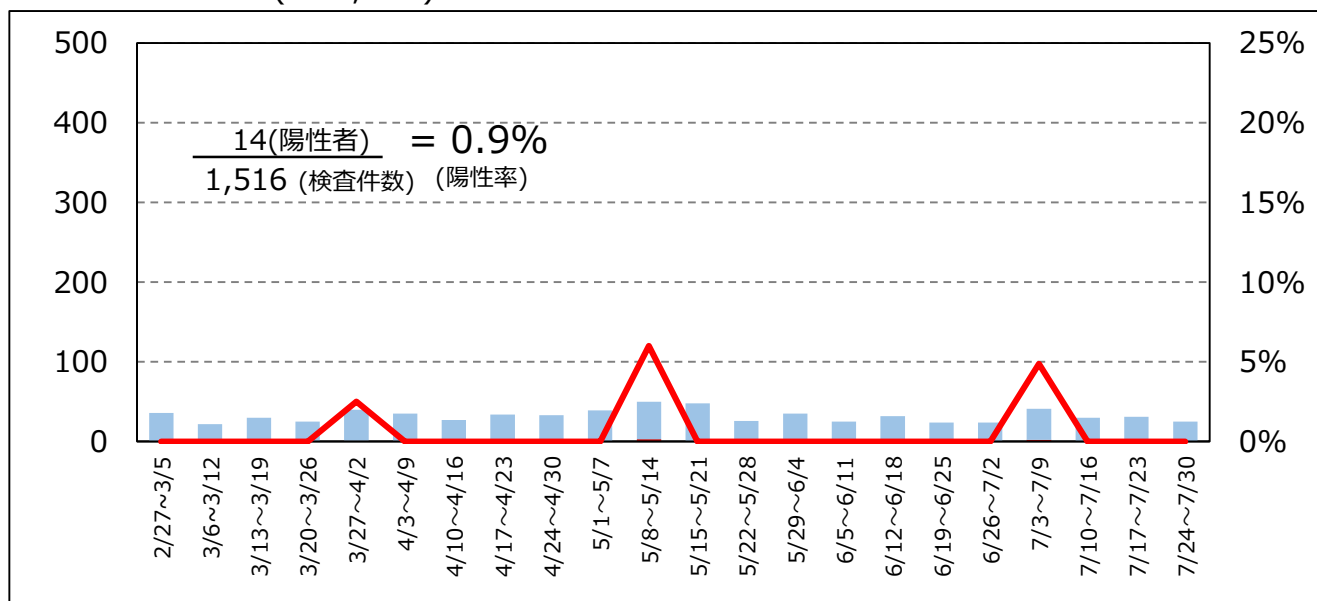


# 尾鷲保健所管内検査件数・陽性率 (n=2,016)

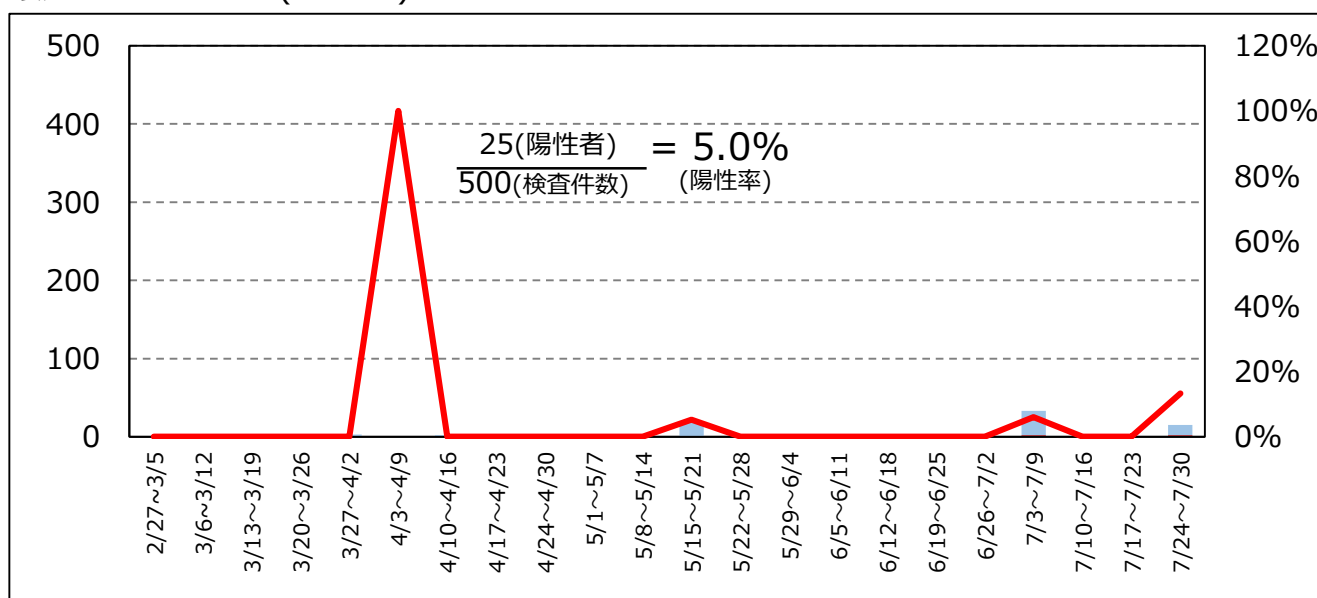
全体陽性率 (n=2,016)



疑い例検査陽性率 (n=1,516)

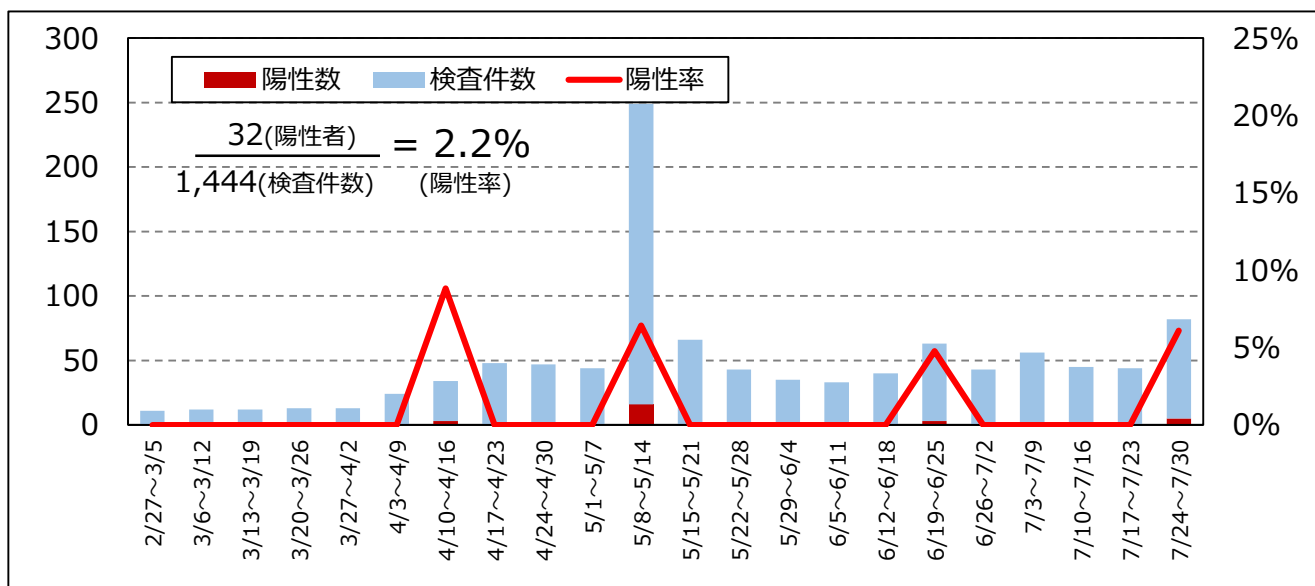


接触者検査陽性率 (n=500)

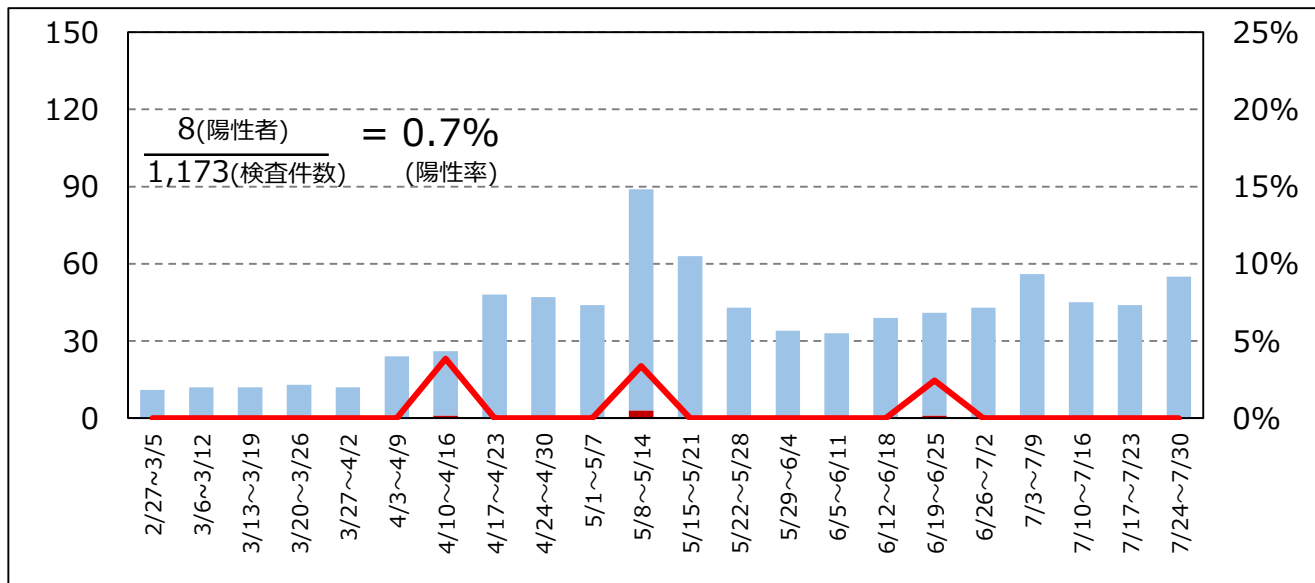


# 熊野保健所管内検査件数・陽性率 (n=1,444)

全体陽性率(n= 1,444)



疑い例検査陽性率 (n=1,173)



接触者検査陽性率 (n= 271)

