

Our Home, MIE

One Paper Contest 2020

Kisusaki Town Exploration
 Hello everyone. Today I'm going to tell you about Kisusaki Town. Kisusaki Town is a small town with an area of 15.92 km² and a population of 6190. Kisusaki Town has a lot of good points. I will introduce two of them.

A rare narrow gauge railroad.
 What is the Hokusei Line?
 We call the Hokusei Line "Hokuseisen". The Hokusei Line runs from West Kunowa Station to Ageki Station. It runs through all 13 stations in about 1 hour. Hokusei Line was opened in the second year of Taisho period. This year, it will celebrate the 106th anniversary.

~ About TODO Takatora ~
 TODO Takatora was born in Kira-cho, Shiga prefecture in 1506. With extraordinary large and brave personality, he joined his first in Amegawa under his lord AZAI Naomasa. After changing some lords, he became a servant of TOYOTOMI Hideyoshi. He became so be trusted by his lord because he increased his military performance. He was a remainer of TOKUGAWA Ieyasu after Hideyoshi passed away. He was very skilled at katana combat. He obtained full honor from "KEISU". Though he was an



~ Owase's strange festival ~
YA-YA festival
 Do you know Owase city?
 Owase city is located on southern part of Mie. And only 17 thousands people live there. By the way, the curious festival is held on Owase city every February. It's named "YA-YA festival". I'd like to tell you about "YA-YA festival".
YA-YA festival schedule (2/2~3/3)
Why is it called "Owase's strange festival"?
 The festival's name came from "ya-ya wawakosana". This is phrase used by samurai in Edo period. They used it when they give their name before fight.

Kihocho
 Kihocho's famous fruit is "Meyer Lemon". Meyer lemon is not sour & mellow and it's very delicious.
 ● Umigame park
 You can see the "Sea Turtle" and you can feed them. What's inside turtle's food? It is seafood!! Sea turtles are very cute. You can eat local foods.

What do you think when you hear the words "Sky Post"? The Sky Post is a post placed at the top of Mt. Asama in Ise City. It's very famous on Instagram. Because you can take some strange pictures there, like the picture of right. You can also buy commemorative postcards near the shop, you can only buy there. Letters posted there are collected daily and postmarked the "Ise" postmark, so those are just the right way to keep the memories of your trip. And the Sky post is the third "sacred place for lovers" in Mie Prefecture.

Every year, Mie Board of Education holds a competition for junior high school students from the prefecture to publicise it entitled "The One Paper Contest-Let's promote our home, Mie, in English". We hope that you will enjoy reading the best of this years' entries and feel the charm of Mie Prefecture.

三重県教育委員会では、毎年、県内の中学生を対象に「郷土三重を英語で発信！～ワン・ペーパー・コンテスト～」を実施しています。このリーフレットでは、今年度の応募作品の中から、優れた6作品を紹介しています。ぜひお読みいただき、三重県の魅力を感じてください！

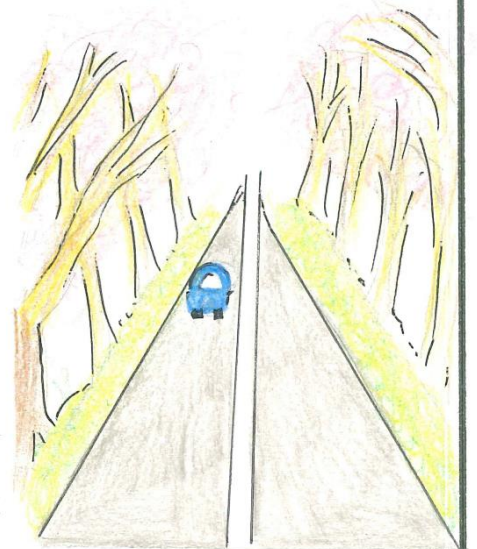
Kisosaki Town Exploration

About Kisosaki Town

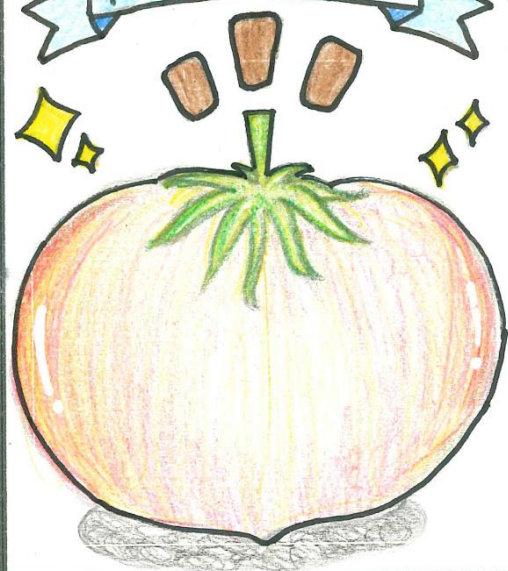
Hello, everyone. Today I'm going to tell you about Kisosaki Town. Kisosaki Town is a small town with an area of 15.72 km² and a population of 6730. Kisosaki Town has a lot of good points. I will introduce two of them.

Cherry blossom road

The first one is the row of cherry blossom road. Located on the east side of Kisosaki Town. In spring, about 1500 cherry blossom road are planted over 4 km. The cherry blossom road on both sides of the road are very beautiful and attract you. You can see it while driving, and you can see it while walking. Every year a festival people is held in a park near a row of cherry blossom road, and it is crowded with people from children to the elderly.



Tomatoes 🍅🍅🍅



The second thing I'm going to talk about is tomatoes. Kisosaki Town has the highest tomato production in Mie Prefecture. So I've eaten a lot of tomatoes since I was a child. There are many delicious tomatoes in Kisosaki Town, but the tomato called "Tomaricchi" is very delicious. Only special tomatoes with high sugar content are carefully selected and sold.

Finally 🍅🍅🍅🍅

As you can see, there are many nice places in Kisosaki Town including beautiful cherry blossom road and delicious tomatoes. The people of the area are very kind and family-like. Please come to see cherry blossom road and tomatoes.

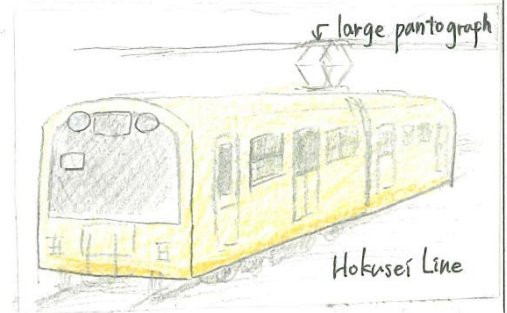
A rare narrow gauge railroad.

What is the Hokusei Line?

We call the Hokusei Line "Hokuseisen". The Hokusei Line runs from West Kuwana Station to Ageki Station. It runs through all 13 stations in about 1 hour. Hokusei Line was opened in the second year of Taisho period. This year, it will celebrate the 106th anniversary.

The Hokusei Line is a rare narrow gauge railroad.

The Hokusei Line has a narrow gauge with a narrow track. It has the longest narrow gauge railroad in Japan. It's about as wide as Disneyland steam locomotive. Narrow gauge railroads are seen only three spots in Japan. Also, The Hokusei Line has very large pantographs. Because, it is smaller than other general trains. Check the height of the power line.



Have you ever taken the Hokusei Line?

Have you ever taken the Hokusei Line? I was surprised at its size when I saw a general train for the first time. It was about twice as wide as the Hokusei Line. Please compare the Hokusei Line with other general trains once.

Maybe you will be surprised.

Hokusei Line's character.

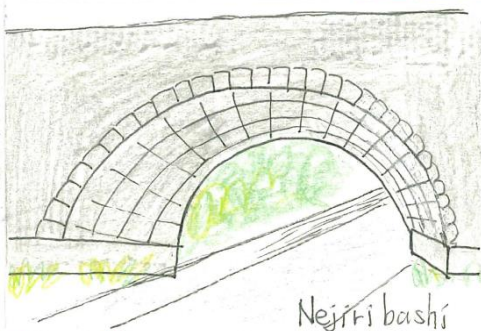
There is a character of the Hokusei Line. Her name is Renge Sohara. She originated at the Rengeji Station and Sohara Station of the Hokusei Line. She is cute.

Rare buildings.

There are many rare buildings. For example, Meganebashi (Megane bridge) and Nejiribashi (Nejiri bridge). Some of them are heritage.



Renge Sohara



Nejiribashi



Meganebashi

Finally...

I want you to use the train to protect the rare Hokusei Line.
I want to keep on cherishing.

~ About TODO Takatora ~



TODO Takatora was born in Kora-cho, Shiga prefecture in 1556. With extraordinary large and brave personality, he joined his first in Anegawa under his lord AZAI Nagamasa. After changing some lords, he became a servant of TOYOTOMI Hideyoshi. He became to be trusted by his lord because he increased his military performance. He was a retainer of TOKUGAWA Ieyasu after Hideyoshi passed away. As being very skilled at building castles, he obtained full trust from IYASU. Though he was an outside daimyo, he was ordered to control a part of Ise country as the first feudal lord of Tsu. Finally, he reached up to the position of lord, which yielded 323,950 koku rice. After that, his descendants had governed Tsu for about 260 years. He passed away at the age of 75 in his house in Edo in 1630.

About building castles

It is said that there were more than 20 castles in Japan that Takatora built because of his reputable skills in architecture. His castles building technology was highly evaluated by Hideyoshi and Ieyasu. He established the way of constructing castles with strong protection, by building up a high stones and a wide inner moat. Also he built Tsu castles in a typical "modern castle architecture style" which had an inner citadel and the outer moat. He constructed a samurai residence in the west, south and north side of the town and a residence for towns people in the east.

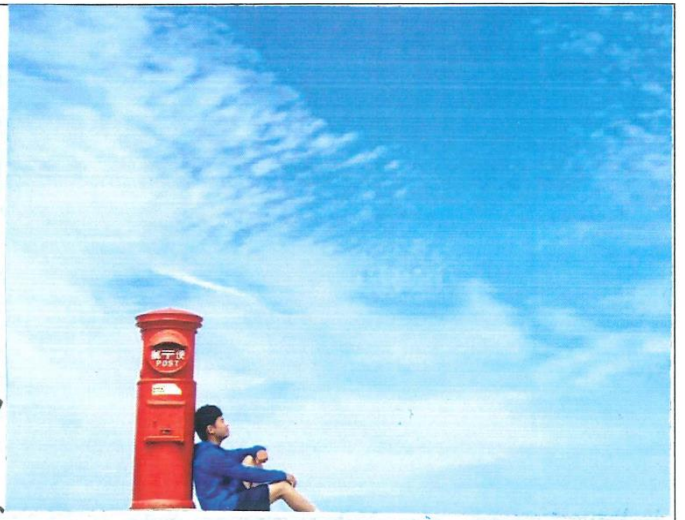
200 teachings

"200 teachings" is the style of a book written by Takatora's servants who learned his lessons. The book has Takatora's 200 teachings with contained his idea and opinions such as good attitude as a human and management of politicians or owners. Here is a part of his teachings: Prepare to die today when you get out of your bed. You would not get fazed if you had that resolution. No servants are good or bad. If you find good points from them, they'd be good. It is bad for you to order what they cannot do.

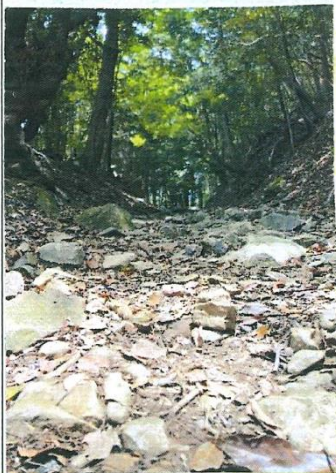
An anecdote for maru-mochi (three rice dumplings) When Takatora was young, he was very poor. He went to a mochi shop (rice dumpling shop) and ordered mochi although he had no money. He honestly apologized to the shopkeeper after ending up with eating all mochi he ordered. Then the shopkeeper did not get angry and said, "You don't have to pay. And take home more mochi if you want. If you are a great samurai, pay me back." Takatora appreciated to him, very impressed with his words. When he promoted to daimyo (lord), he made his flag slogan the painting of three white rice dumplings. A white dumpling is "Shiro-mochi" in Japanese. "Shiro-mochi" also means a castle owner. He visited the shop again and gave much money to the shopkeeper.



What do you think when you hear the words "Sky Post"? The Sky Post is a post placed at the top of Mt. Asama in Ise City. It's very famous on Instagram. Because you can take some strange pictures there, like the picture of right. You can also buy commemorative postcards near the shop, you can only buy there. Letters posted there are collected daily and postmarked the "Ise" postmark, so those are just the right way to keep the memories of your trip. And the Sky post is the third "sacred place for lovers" in Mie Prefecture, you can send your messages from there instead of using your smartphone.



This Sky Post is placed at a high place, so you can enjoy the spectacular view like the picture of right, and you can watch the sunrise if it is early in the morning. There is also a footbath here, so you can take a rest when you visit Ise Shrine.



◎ My Experience

Most people goes to this Sky Post by them car, but I went up the mountain from Asama station to actually get there. There is such of a steep path until arrive the Sky Post. However, you can walk in the nature that you don't usually get to experience. It takes about an hour and a half on foot from Asama station to the Sky Post and it's veriy tired but I think that it's a good idea to climb up and feel such hard. Then you should take a footbath to rest. And you can enjoy Japanese culture. If you visit Mie, the first place to visit is to the Sky Post!!

~Owase's strange festival~ YA-YA festival

Do you know Owase city?

Owase city is located on southern part of Mie. And only 17 thousands people live there. By the way, the curious festival is held on Owase city every February. It's named "YA-YA festival". I'd like to tell you about "YA-YA festival"!

MIE



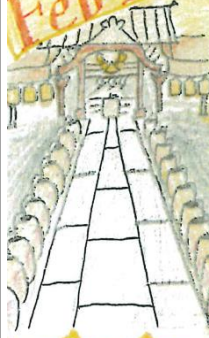
FESTIVAL HISTORY

The festival's name come from "Ya-Ya warekosowa". This is phrase used by samurai in Edo period. They used it when they give their name before fight.

YA-YA festival Schedule (2/1 ~ 2/5)

Feb 1

0:00 ~ Tobira biraki
10:00 ~ Yuishosai
18:00 ~ Zaimawari



This is the picture of "Tobirabiraki". Many lanterns are lined up at Owase shrine to call the god. They are very beautiful.

19:00 ~ YA-YA Neri (curious point 1)
20:00 ~ Korikaki (curious point 2)
21:00 ~ Go to shrine to worship

Feb 5

Many children walk to Owase shrine as dancing. And a lot of people came to see their dance. Also there are many kinds of stalls.



Boys wearing hakama hit the target with big bows (Oyuminogi)

DAYTIME
AT NIGHT
19:00 ~ Oyuminogi
20:40 ~ Oshishi no shutujo
21:00 ~ Touwatashi no gishiki

MY EXPERIENCE

I had danced in the festival for six years. I practiced a lot before the festival until late at night. It was very hard, but I could make new friends. Now, I go see the festival with my friends every year. I'm looking forward to seeing the children I danced together before.



Why is it called Owase's Strange festival? Curious Point 1



"YA-YA Neri"

Men who are wearing special white costumes hit hard each other. It's very intense. So it is called "Naked Fight Festival". About 600 people say "chosaja" in loud voice. In spite of the winter, it's very hot there. I was very surprised when I saw it for the first time.

Curious Point 2

"Korikaki"

After "YA-YA Neri" men dive into the sea. Surprisingly, they don't wear clothes! They do it to cleanse their bodies. There are many audiences. Have you ever heard such customs??

The future of "YA-YA festival"

YA-YA festival is the traditional event. It has been protected by local people for 350 years. That's a special festival for us. In Owase school is closed on February 5th to join the festival. But, participants have decreased recently. The festival may disappear. So we have to protect local festival. As the first step, I try to inform this festival to foreign people through this report.



Why don't you come to see YA-YA festival? I'm sure you can make great memories!

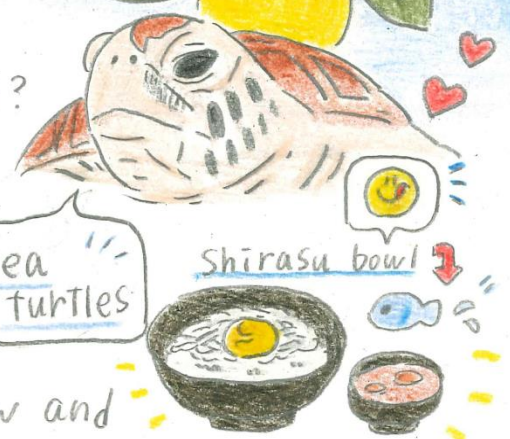
Kihochho

Kihochho's famous fruit is "Meyer Lemon"
Meyer Lemon is not sour & mellow and it's very delicious!!



● Umigame Park 🍴 🐢

You can see the "Sea turtle" and you can feed them/what's inside turtle's food? It is seafood!! Sea turtles are very cute. You can eat local foods at Umigame park. The popular food is "Shirasu bowl" I recommend eating on the terrace. You can enjoy beautiful view and delicious food!!



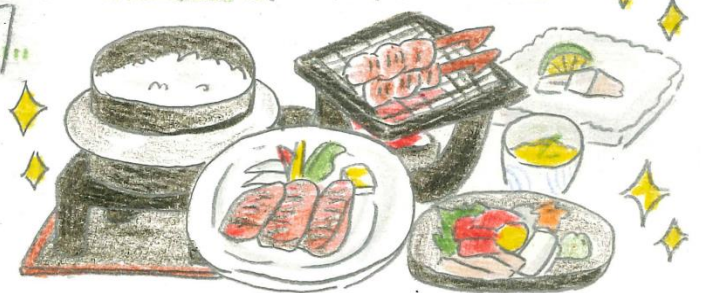
? what is torokko train?

Torokko train used to carry mine, but it is used for sightseeing. Torokko train links between Seiryuso and Yunokuchi-onsen. ☺

Kumano

● Kihochho has fresh air & beautiful nature. "Yunokuchionsen" I have been to Yunokuchionsen many times. It heals well. A beautiful cottage & A Bungalow are besides there. You can enjoy nature.

● Seiryuso is a good hotel. You can enjoy the hot spring, outside the bath. You can see beautiful view & eat Kumano local food. For example, Kumano beef Nabe & Zidori Nabe are very delicious. Seiryuso is near the torokko station. You can get on torokko and go to Yunokuchionsen.



テーマを選んだ理由

Kisosaki Town Exploration

木曾岬町立木曾岬中学校 伊藤 萌々子

トマトと桜並木は、木曾岬町では有名ですが、まだ知らない方がたくさんいると思います。少しでも木曾岬町の魅力を知って、興味を持ってもらえるようにいいところを伝えたかったので、テーマを選びました。トマトを食べてもらって、「トマトってこんなにおいしいんだ!」というトマトの魅力を知ってもらいたいです。桜並木は春にはとてもきれいに桜が咲きます。車で通って見ることもできるので見に来てもらいたいです。

A rare narrow gauge railroad “Hokusei Line”

いなべ市立北勢中学校 水野 琴奏

とても身近な北勢線。線路の幅がせまく、小さいナローゲージの車両。当たり前のように感じていたけれど、とても珍しい車両だと知り、たくさんの人に北勢線の魅力を広めたくなったからです。北勢線だけでなく、キャラクターや珍しい建築物も合わせて魅力を紹介したいと思い、まとめました。北勢線に興味を持ってもらえたらと思います。

TODO Takatora

津市立東橋内中学校 田中 照志奈

子どもの頃から遊びに行ったことのあるお城公園。誰が造ったか不思議に思い、調べてみようと思いました。藤堂高虎は津城だけでなく、多くの城を築いた築城の名主と呼ばれています。徳川家康から津の街を治めるよう言われ、現在の津市の街並みの礎を作った人ということが分かりました。「しろもちくん」が津市のマスコットキャラクターであり、高虎の若い頃の逸話がモチーフになっていることが分かりました。

A good place to visit “Sky Post” in Mt. Asama

皇學館中学校 深津 弘季

僕は中学生になってから、天気に興味を持ち始めました。そして、自分の住んでいる伊勢に「天空のポスト」という観光客に人気の場所があると知り、「伊勢みたいな田舎でも、こんな場所があるんだ」と思いました。それから実際に行ってみて、素晴らしく美しい眺めだったので、たくさんの人に知ってもらい、伊勢の隠れた魅力を感じてほしいです。

YA-YA festival

尾鷲市立尾鷲中学校 森 輝

尾鷲市では、奇祭とよばれる激しく珍しい「ヤーヤ祭り」が毎年開催されています。ヤーヤ祭りは、尾鷲市が誇る350年以上前から続く伝統的な祭りです。私も小さい頃は踊り子として、今は見る側として毎年参加してきました。そして、今回私の大好きなヤーヤ祭りをもっとたくさんの人に知ってもらいたいと思い、このテーマを選びました。ヤーヤ祭りの魅力をまとめたので、ぜひヤーヤ祭りに参加するために、一度尾鷲市を訪れてみてください!

My Favorite place

紀宝町立矢湊中学校 岡崎 紫音

私が住んでいる紀宝町は、自然豊かでとてもいいところです。しかし、あまりたくさんの人たちに知られていないので、私がこの地方のことをアピールして、たくさんの人たちに知ってもらいたくて応募しました。そして、私のおじいちゃんたちが住んでいる熊野市紀和町も、自然がいっぱいで大好きなところなので、ぜひこの機会に知ってもらえると嬉しいです。まだまだたくさん魅力が三重県にあるので、ぜひ来てほしいです。