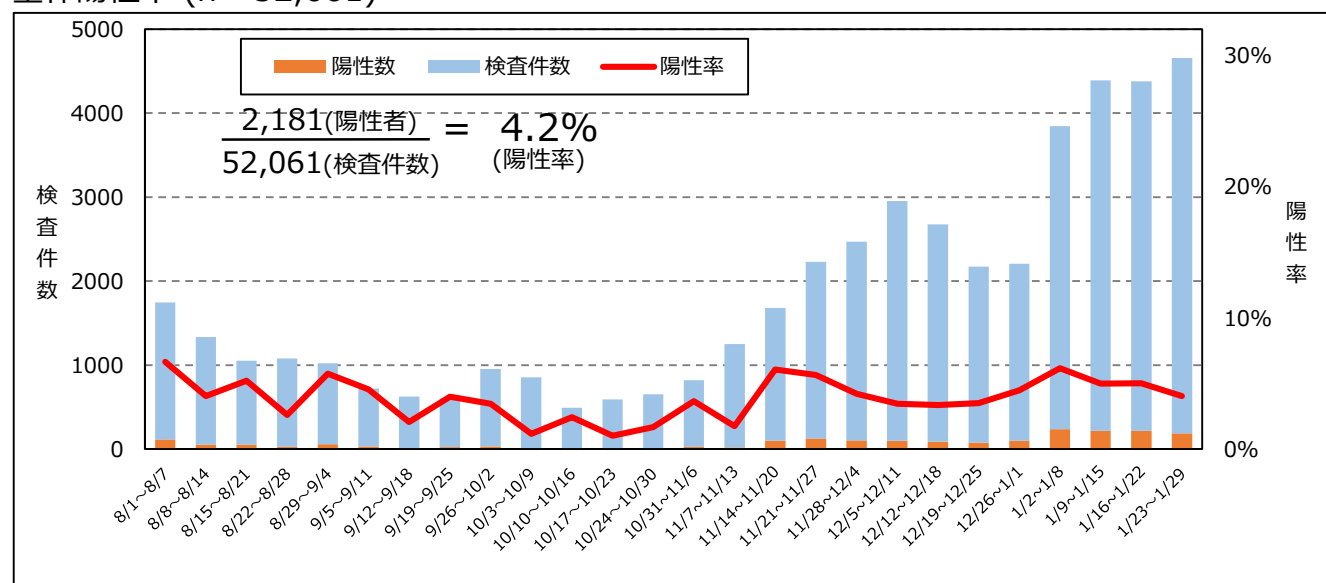


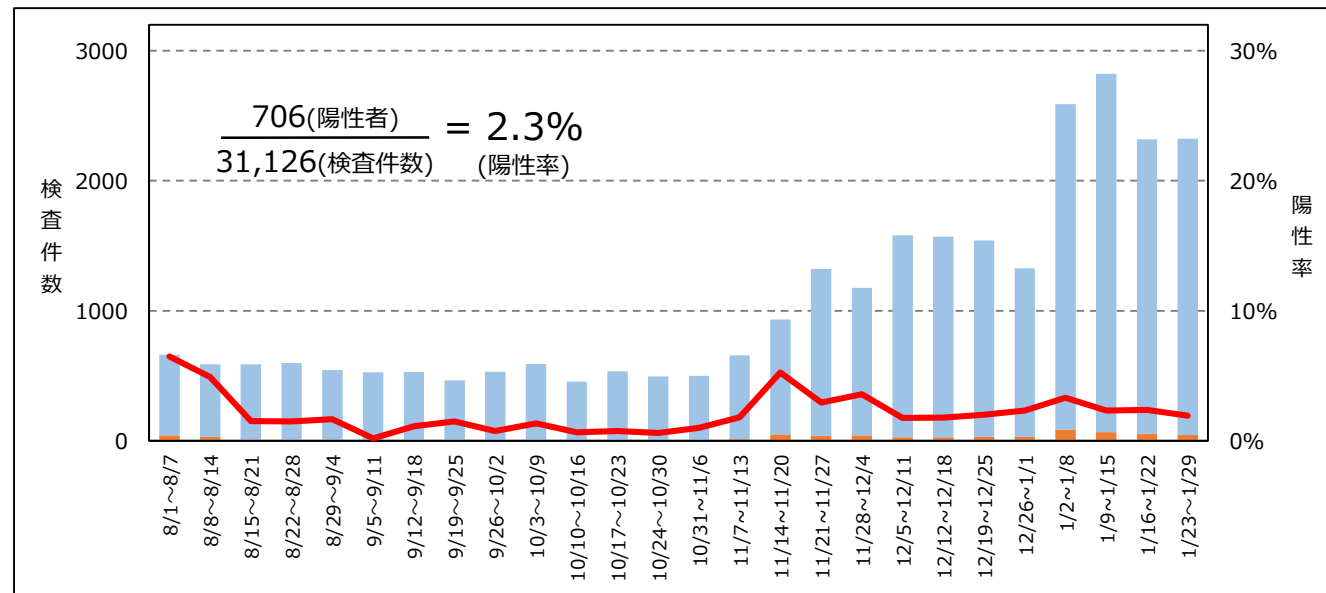
全体陽性率 (n= 52,061)

※陰性確認のための検査を除く



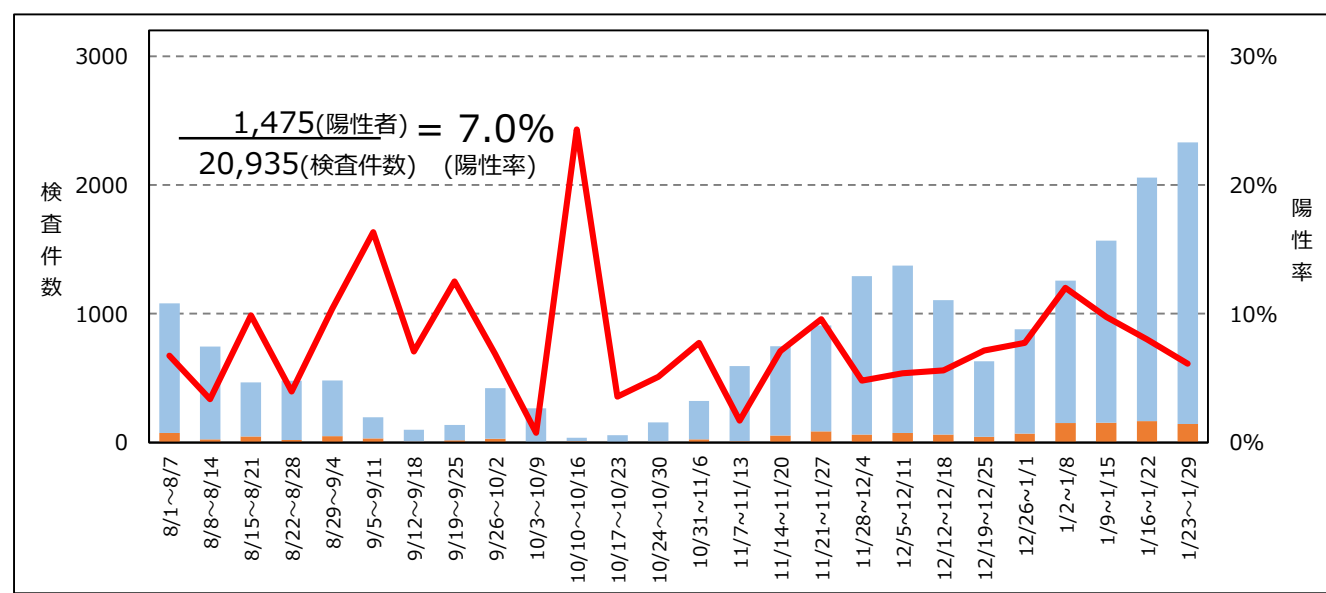
疑い例検査陽性率 (n=31,126)

※疑い例検査…疑い例として診断され、実施した検査



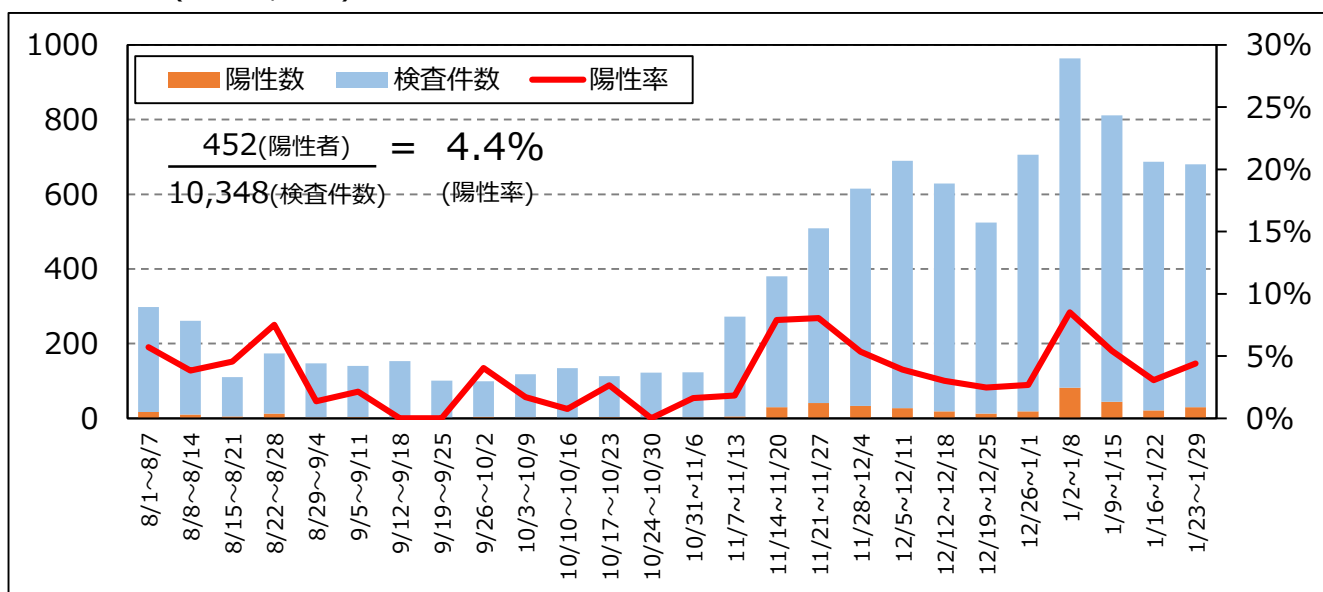
接触者検査陽性率 (n= 20,935)

※接触者検査…接触者調査の一環で実施した検査

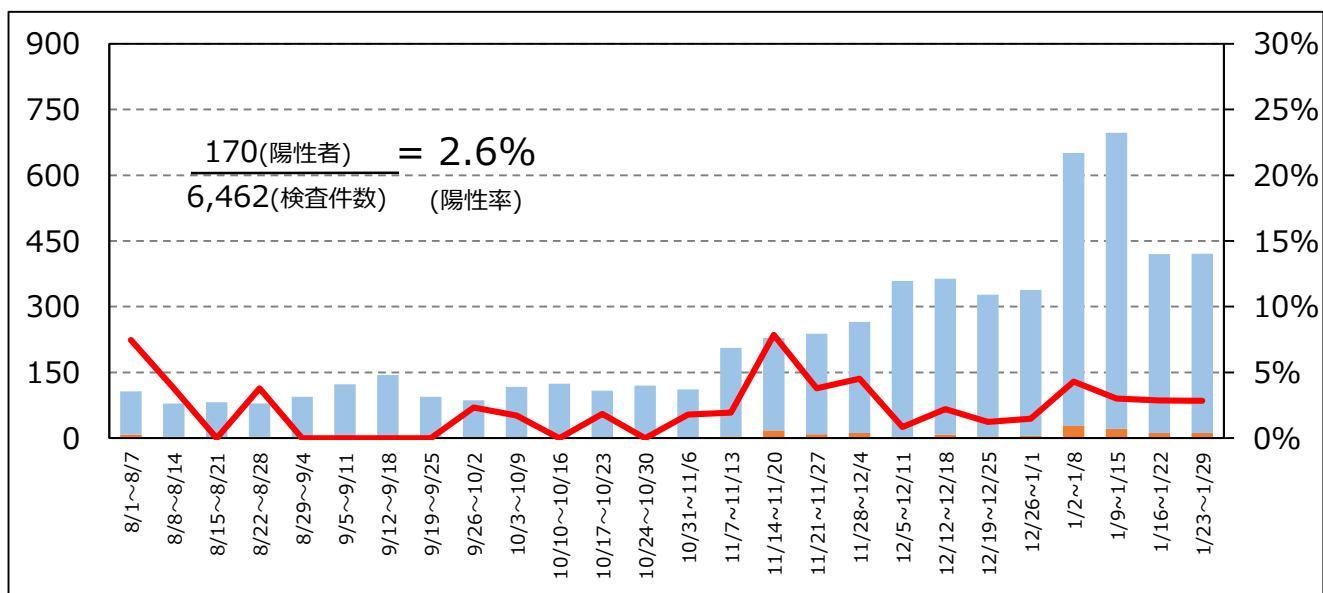


桑名保健所管内陽性率 (n=10,348)

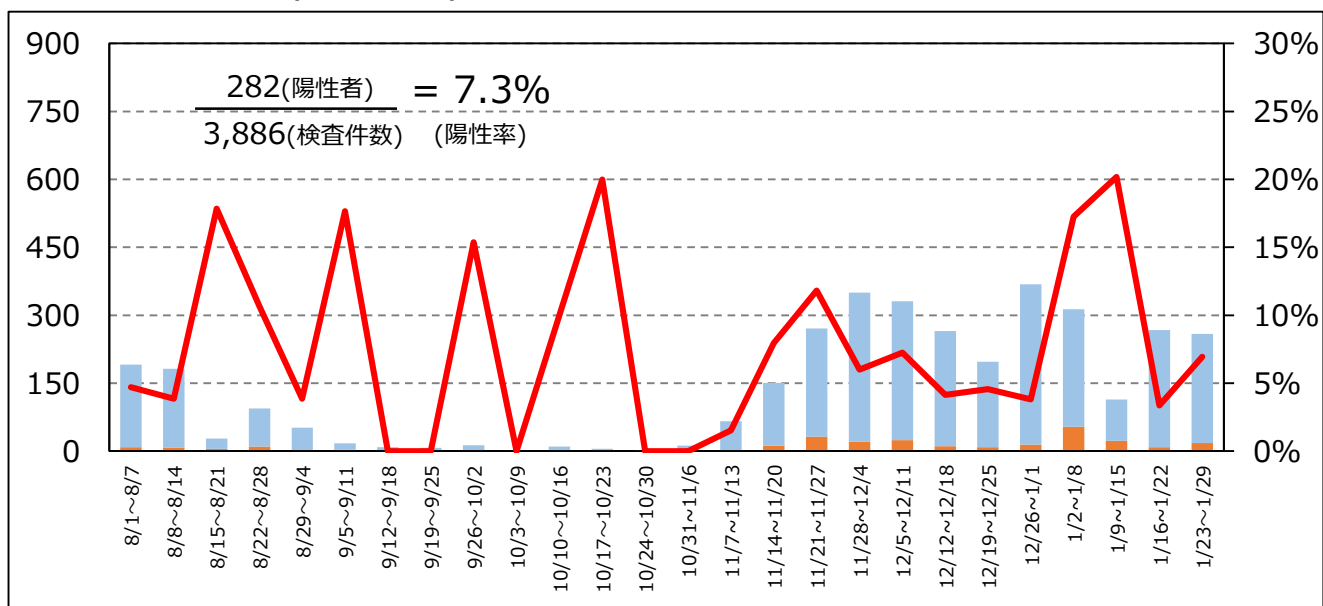
全体陽性率(n=10,348)



疑い例検査陽性率 (n= 6,462)

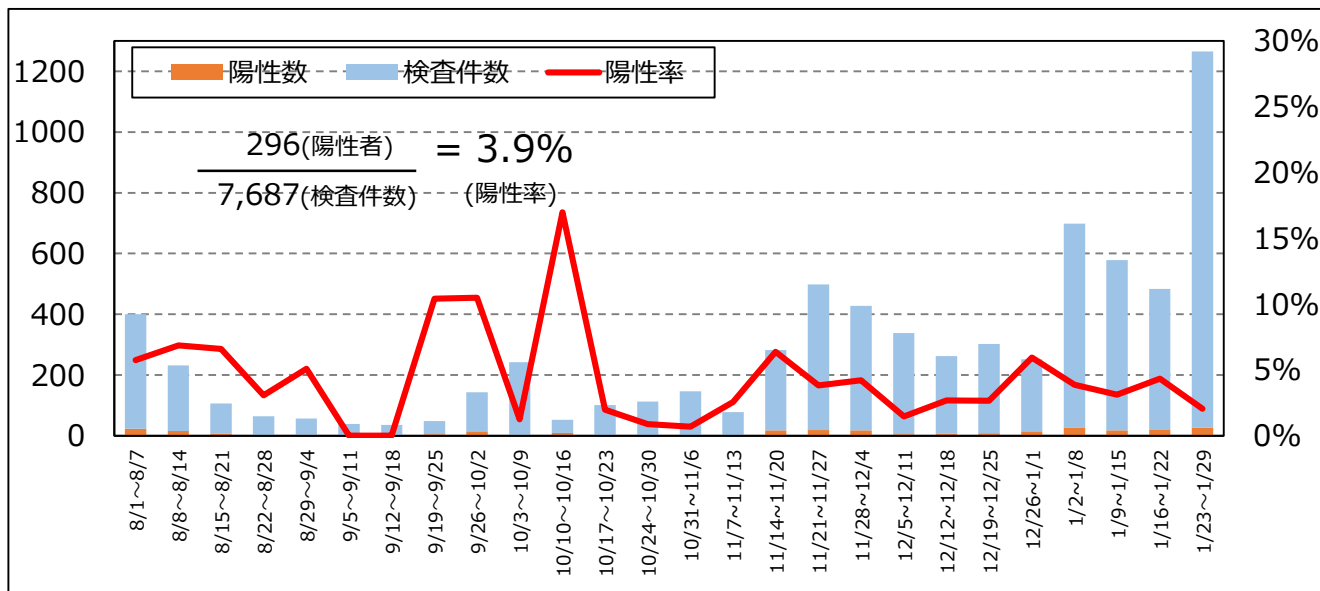


接触者検査陽性率 (n= 3,886)

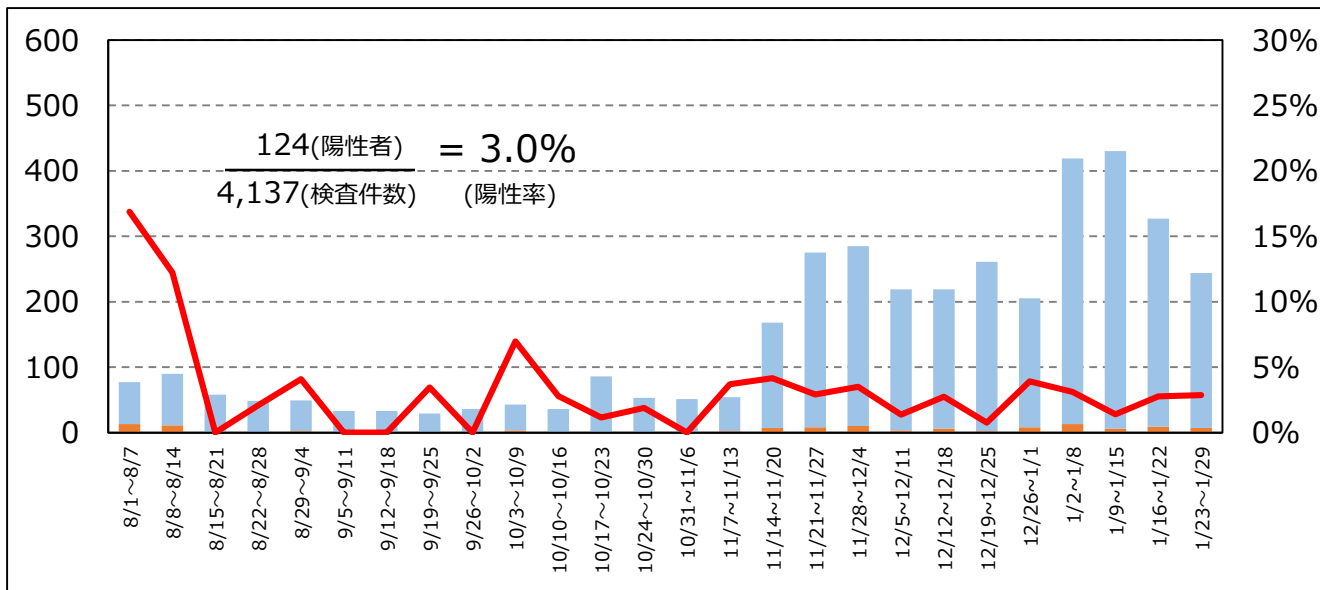


四日市市保健所管内陽性率 (n=7,687)

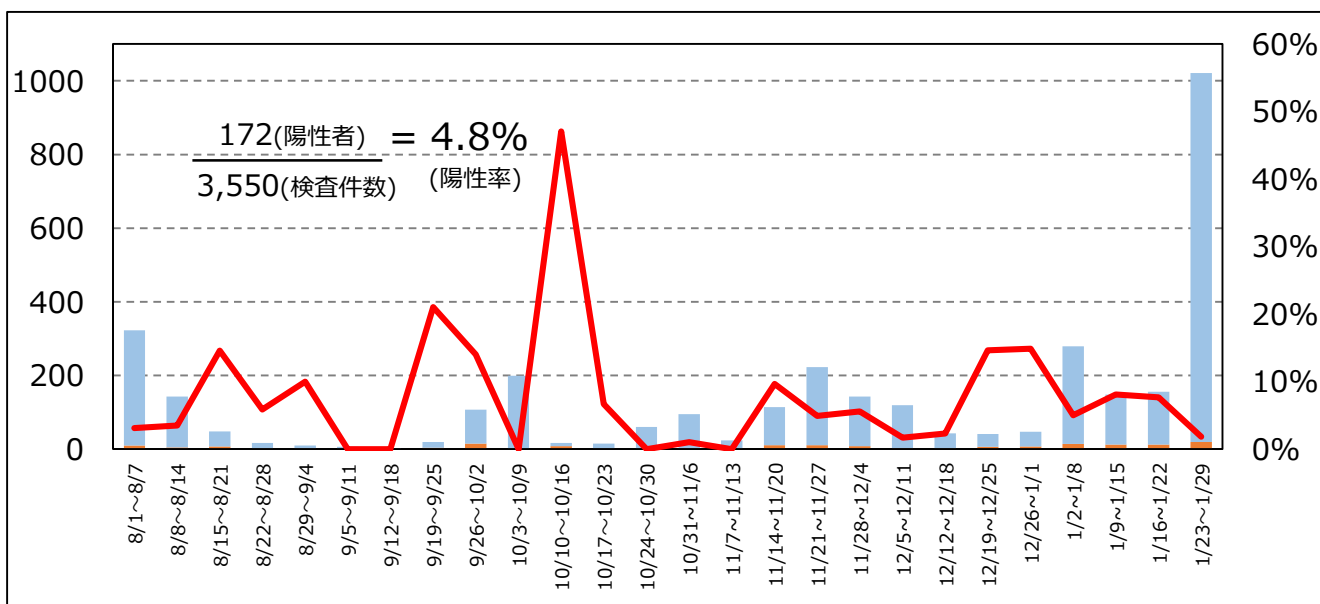
全体陽性率 (n= 7,687)



疑い例検査陽性率 (n= 4,137)

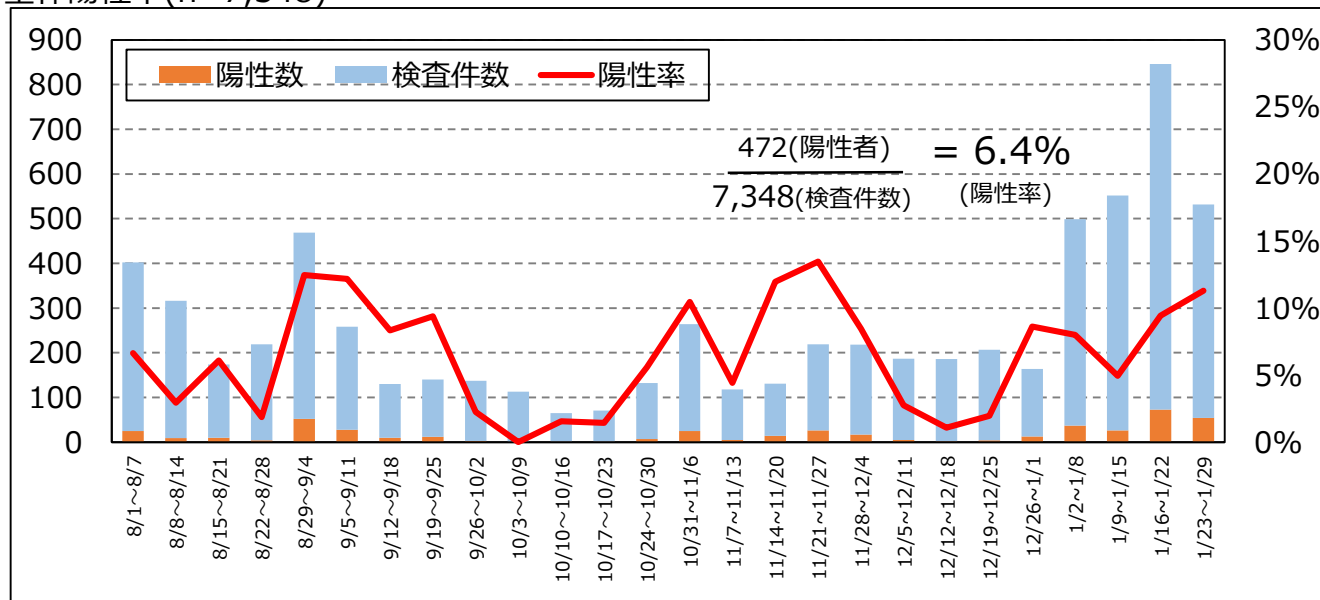


接触者検査陽性率 (n= 3,550)

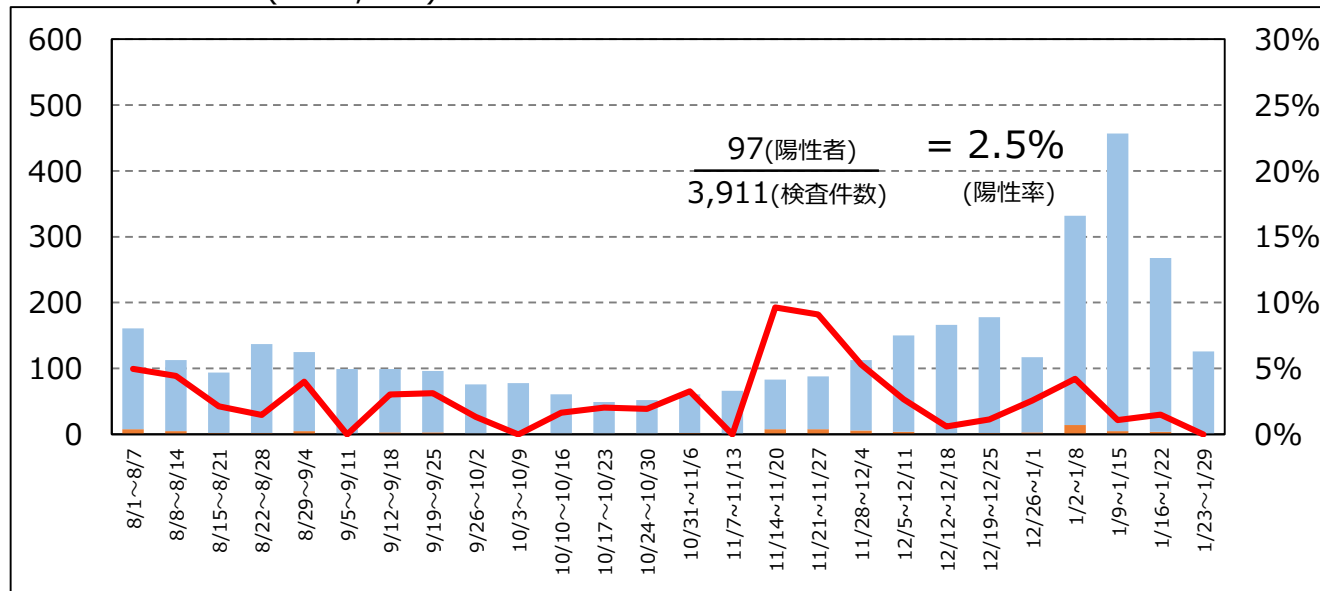


鈴鹿保健所管内陽性率 (n=7,348)

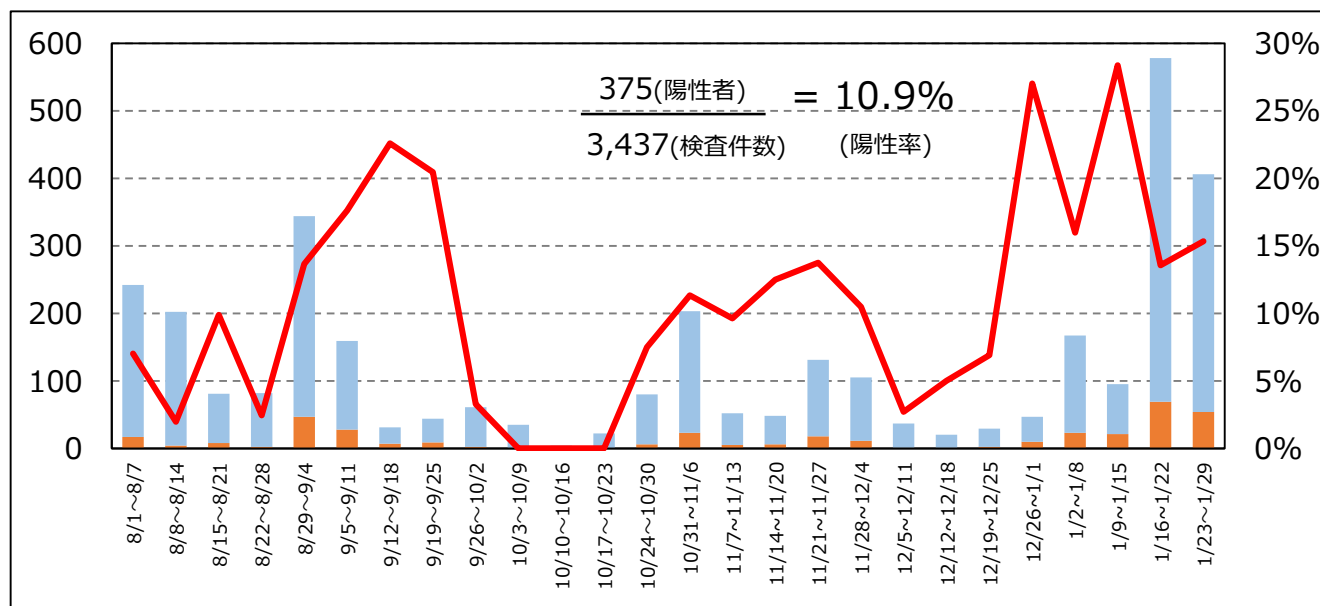
全体陽性率(n=7,348)



疑い例検査陽性率 (n= 3,911)

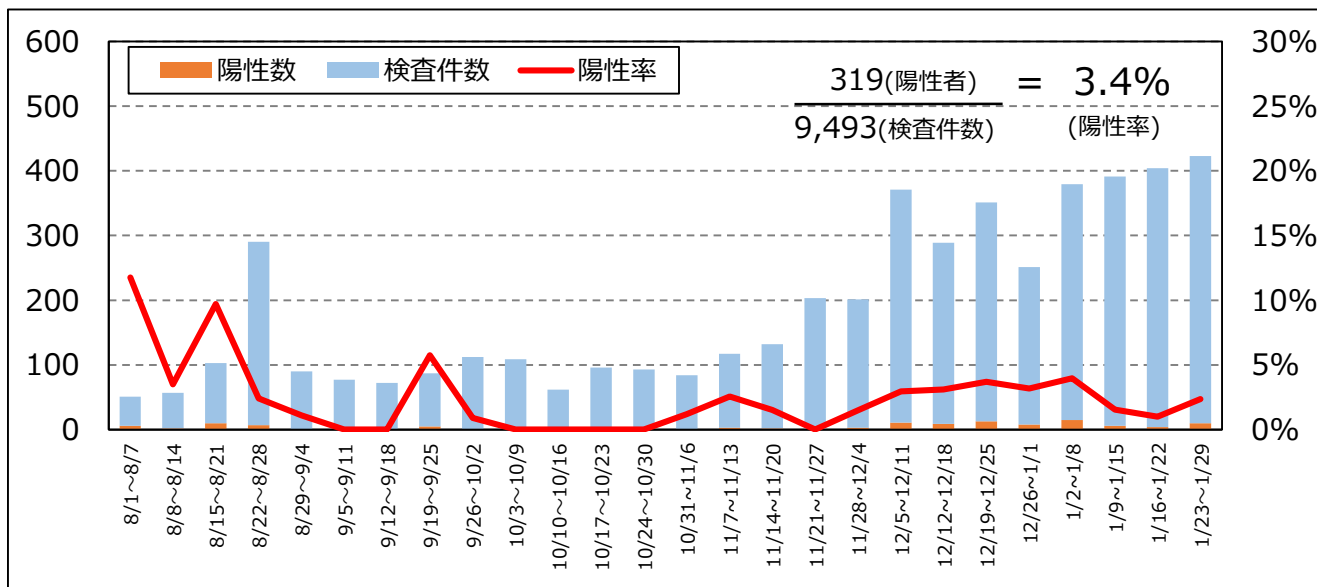


接触者検査陽性率 (n= 3,437)

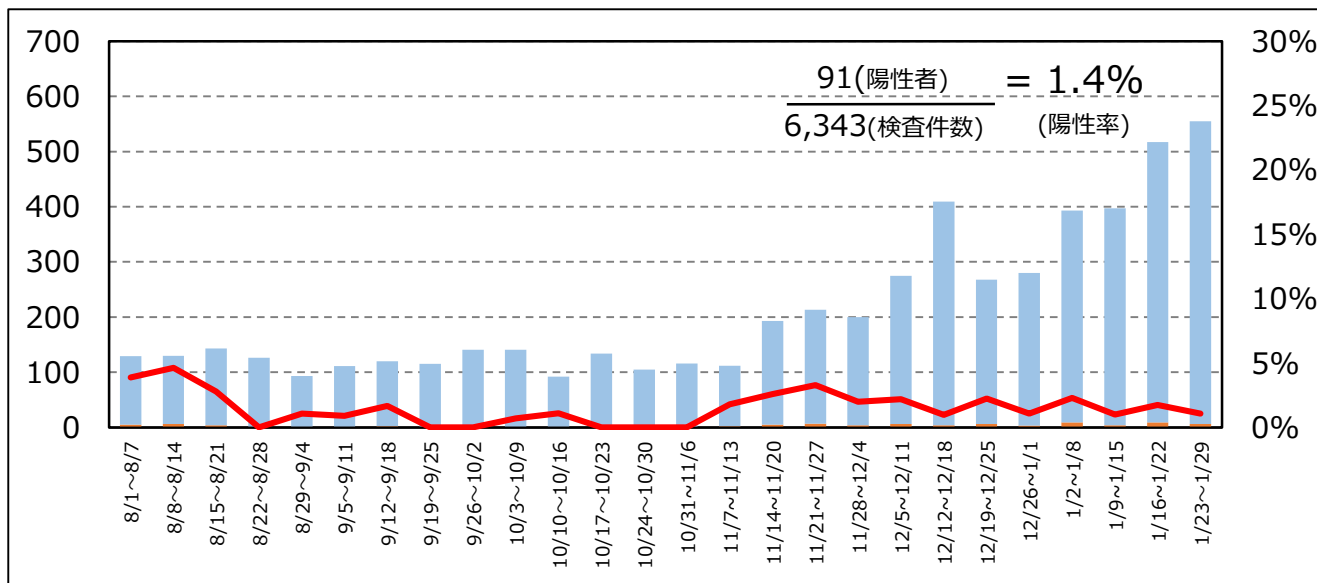


津保健所管内陽性率 (n=9,493)

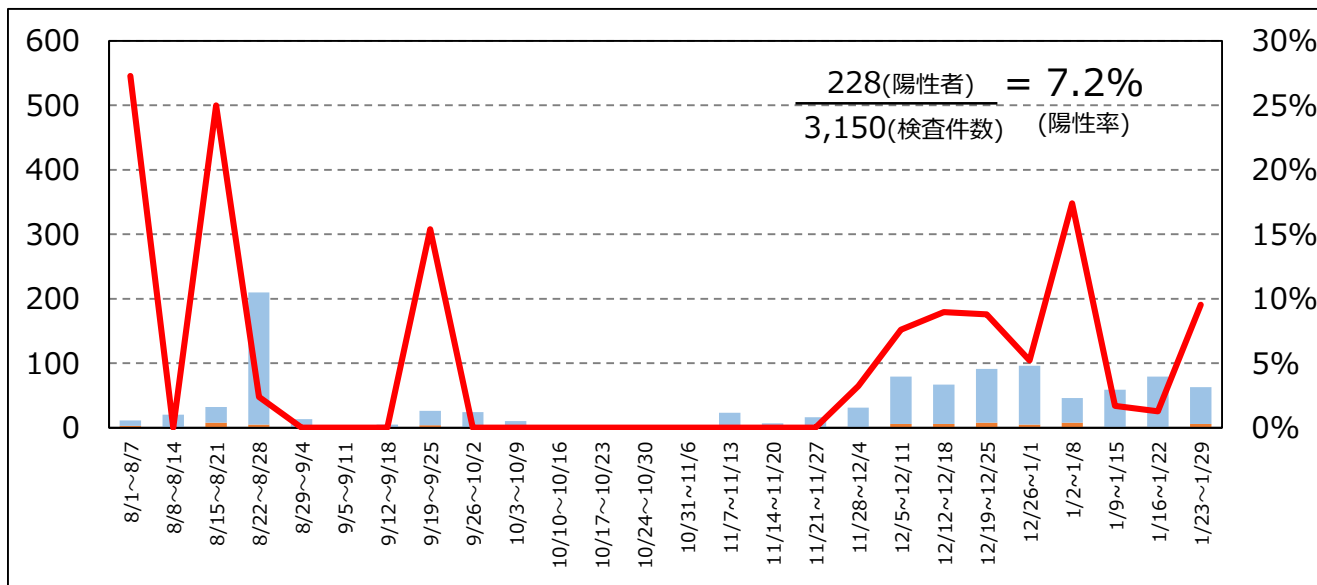
全体陽性率(n=9,493)



疑い例検査陽性率 (n= 6,343)

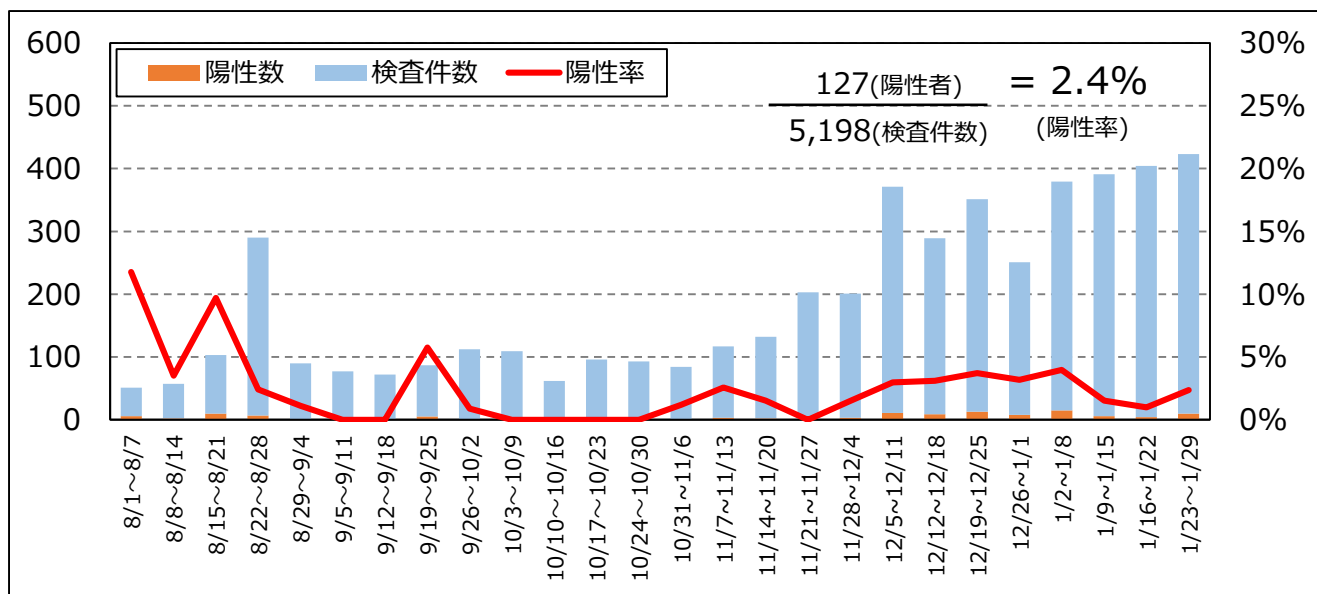


接触者検査陽性率 (n= 3,150)

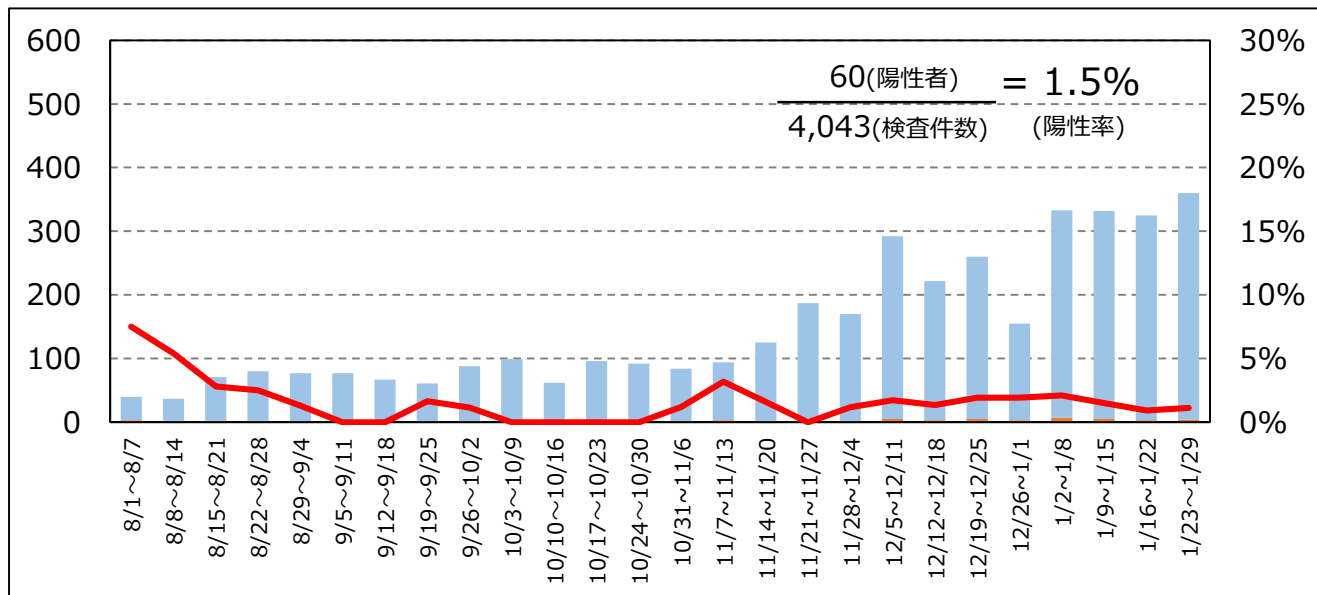


松阪保健所管内陽性率 (n=5,198)

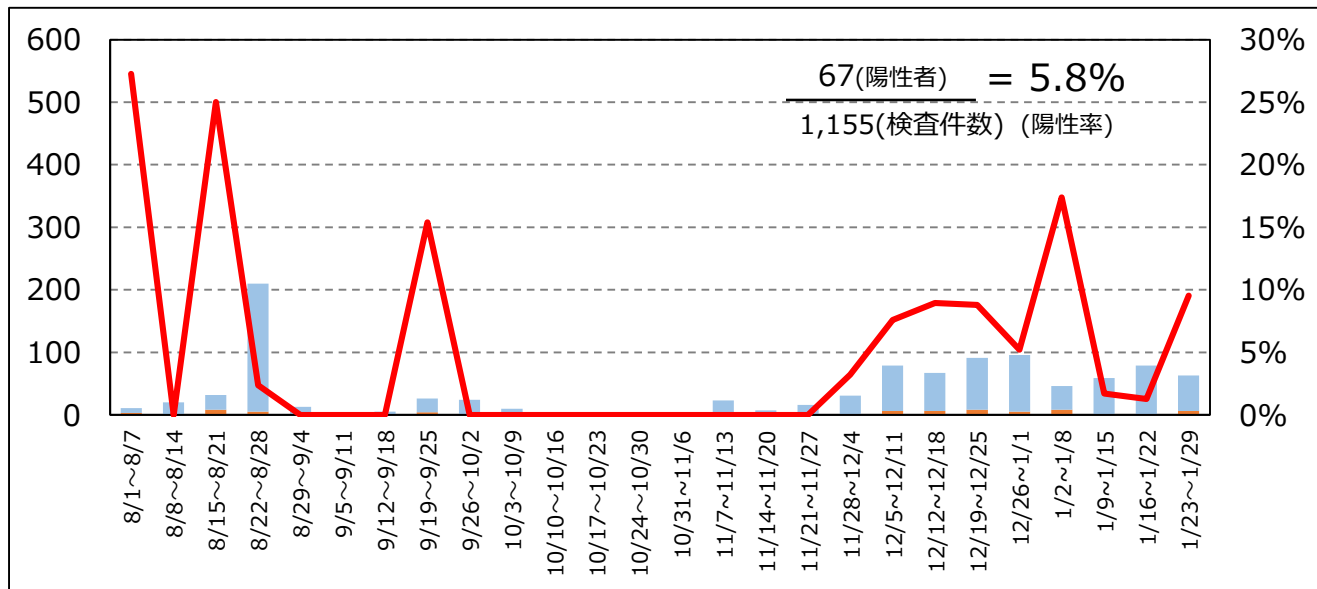
全体陽性率 (n=5,198)



疑い例検査陽性率 (n= 4,043)

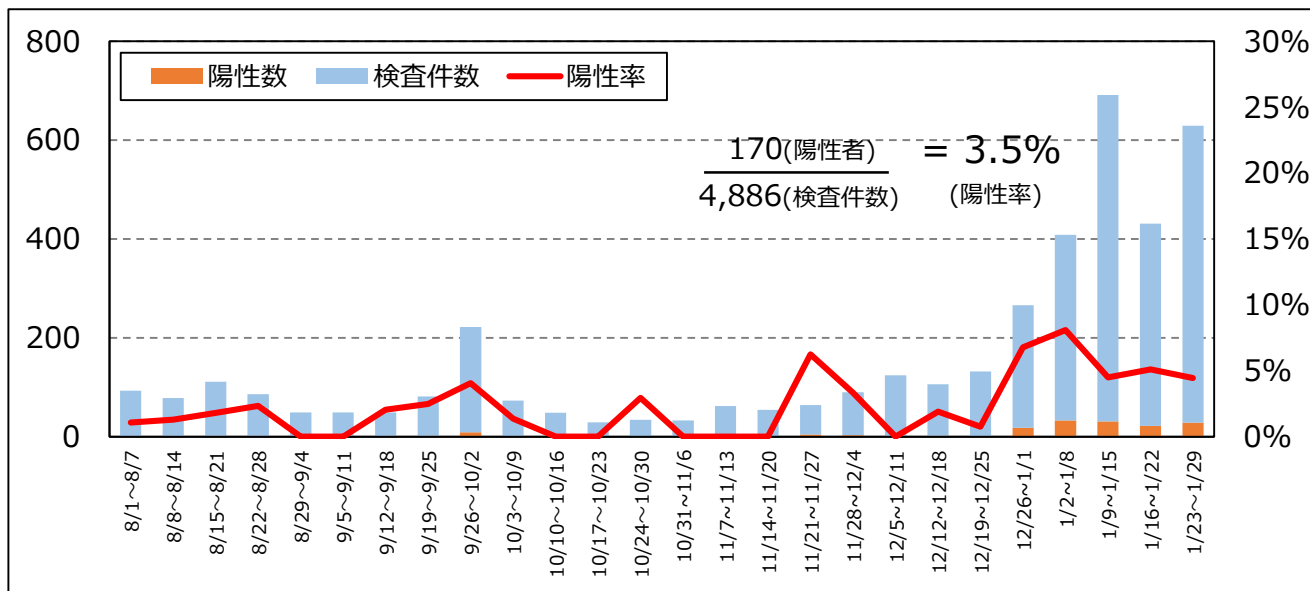


接触者検査陽性率 (n= 1,155)

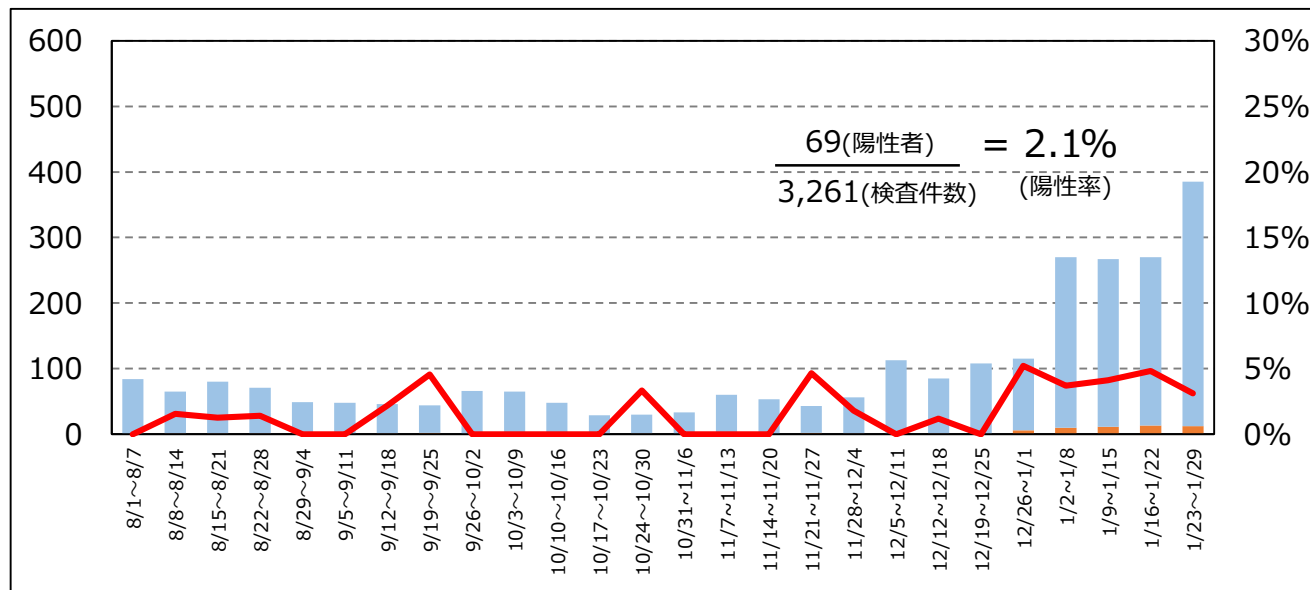


伊勢保健所管内陽性率 (n=4,886)

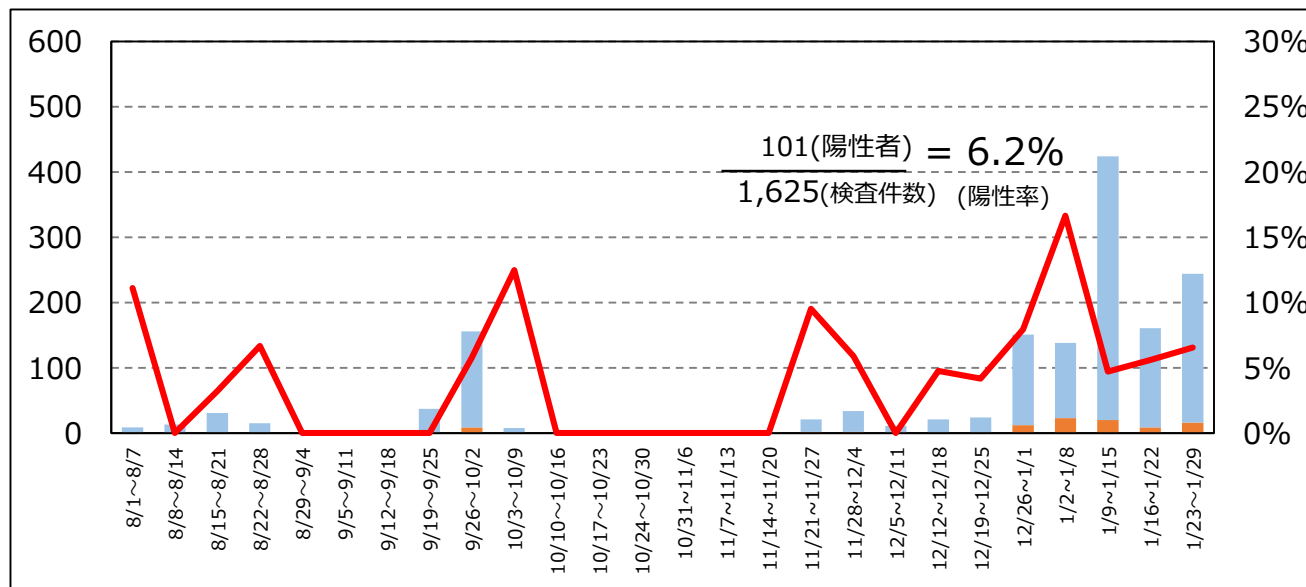
全体陽性率(n=4,886)



疑い例検査陽性率 (n=3,261)

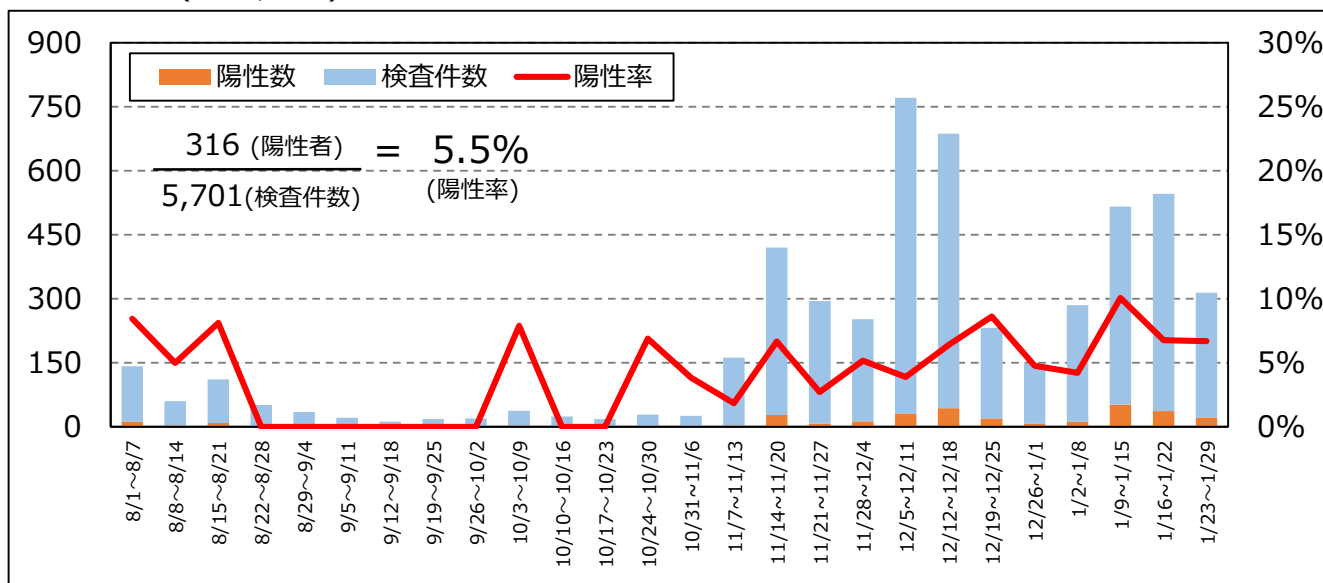


接触者検査陽性率 (n=1,625)

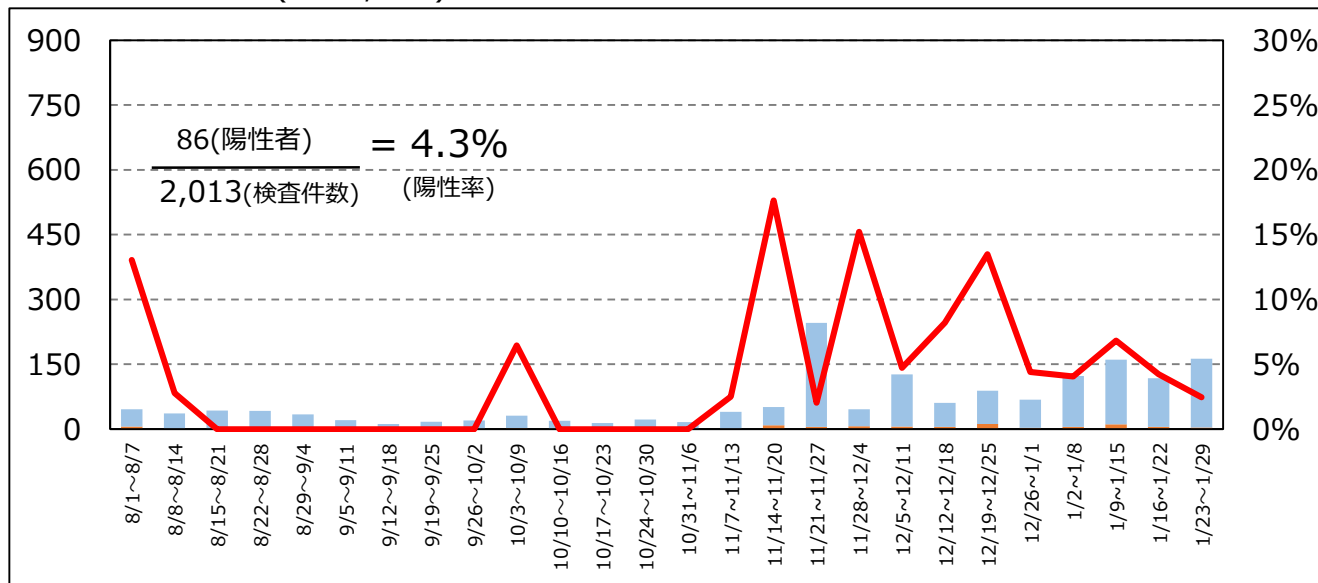


伊賀保健所管内陽性率 (n=5,701)

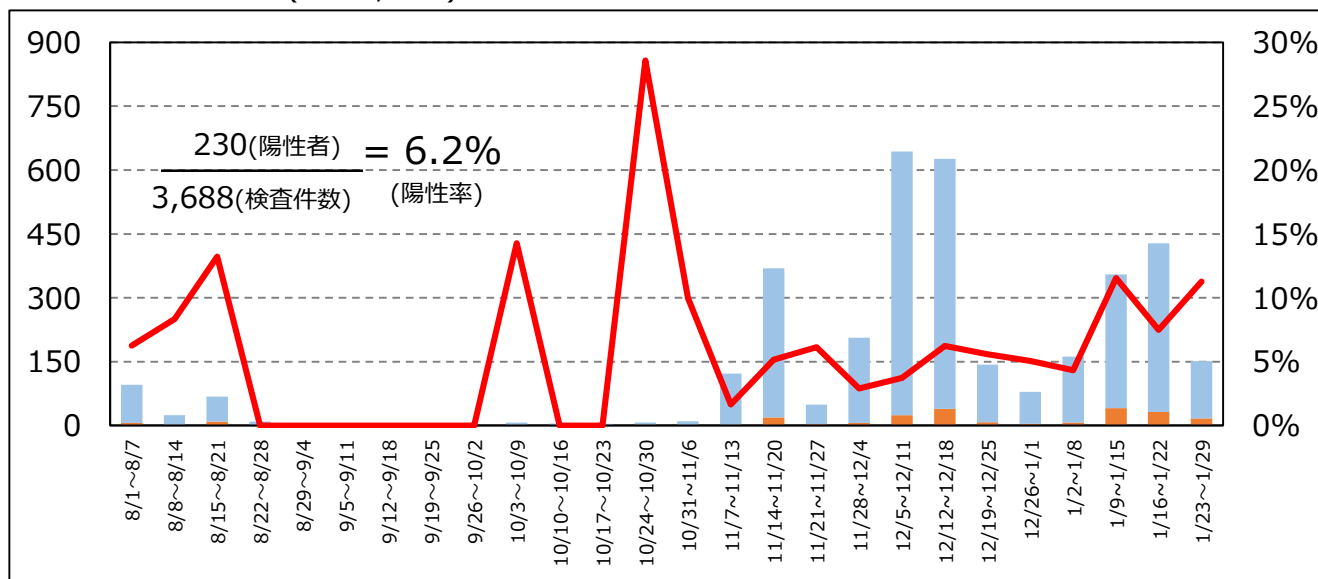
全体陽性率(n=5,701)



疑い例検査陽性率 (n= 2,013)

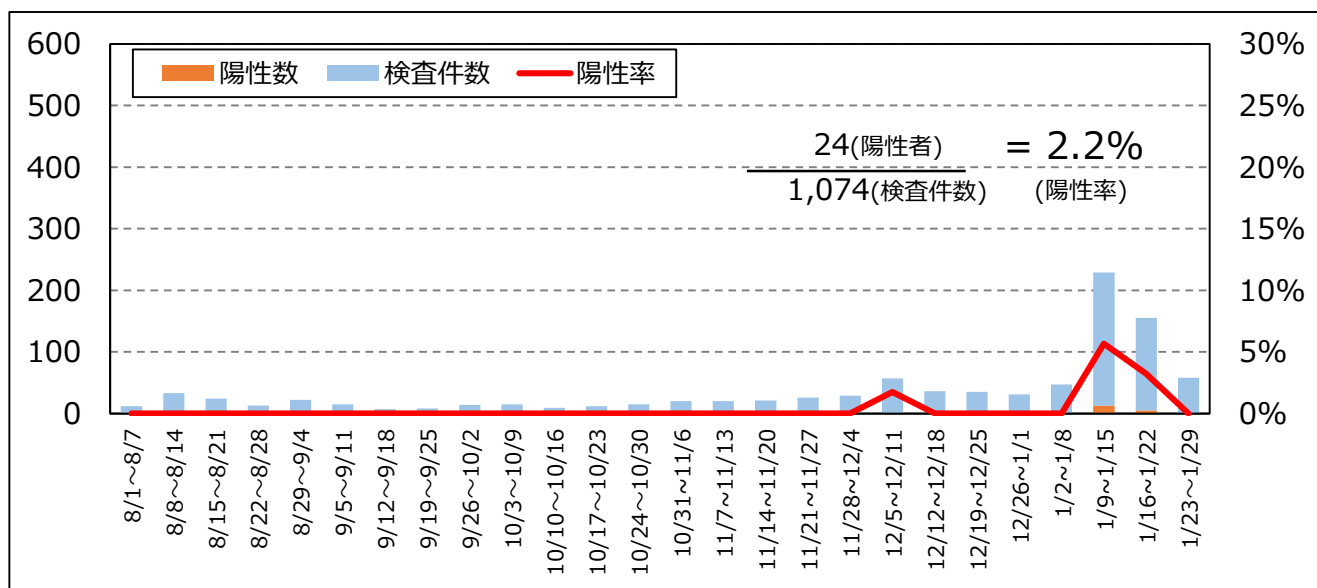


接触者検査陽性率 (n= 3,688)

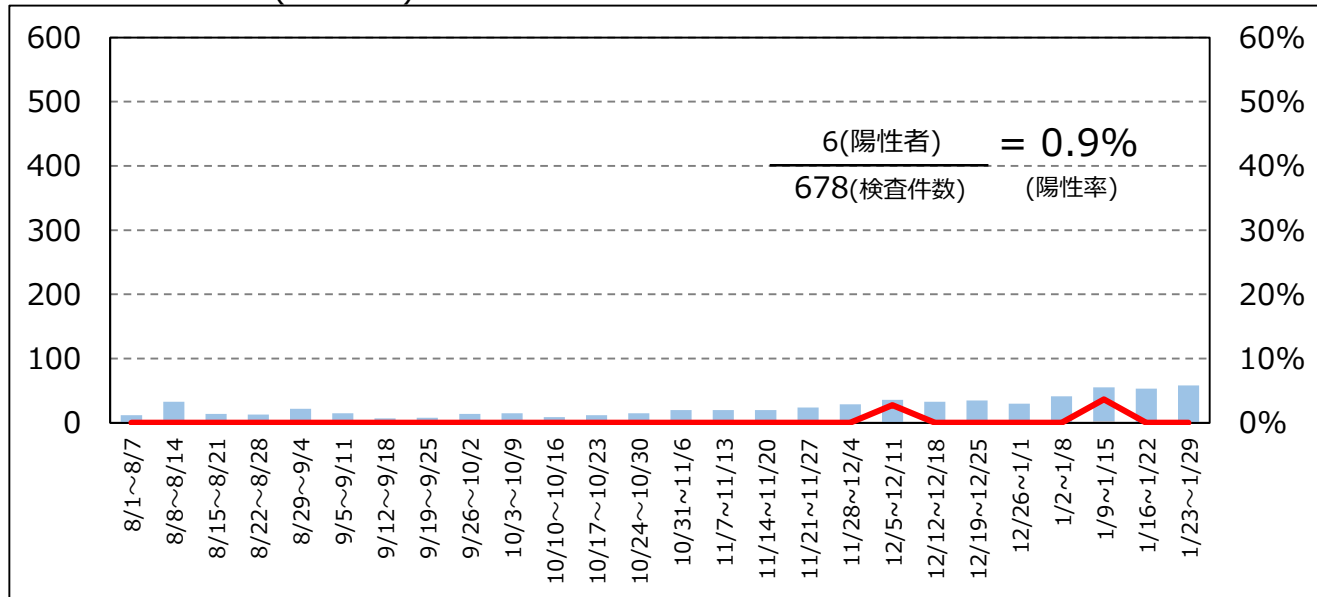


尾鷲保健所管内陽性率 (n=1,074)

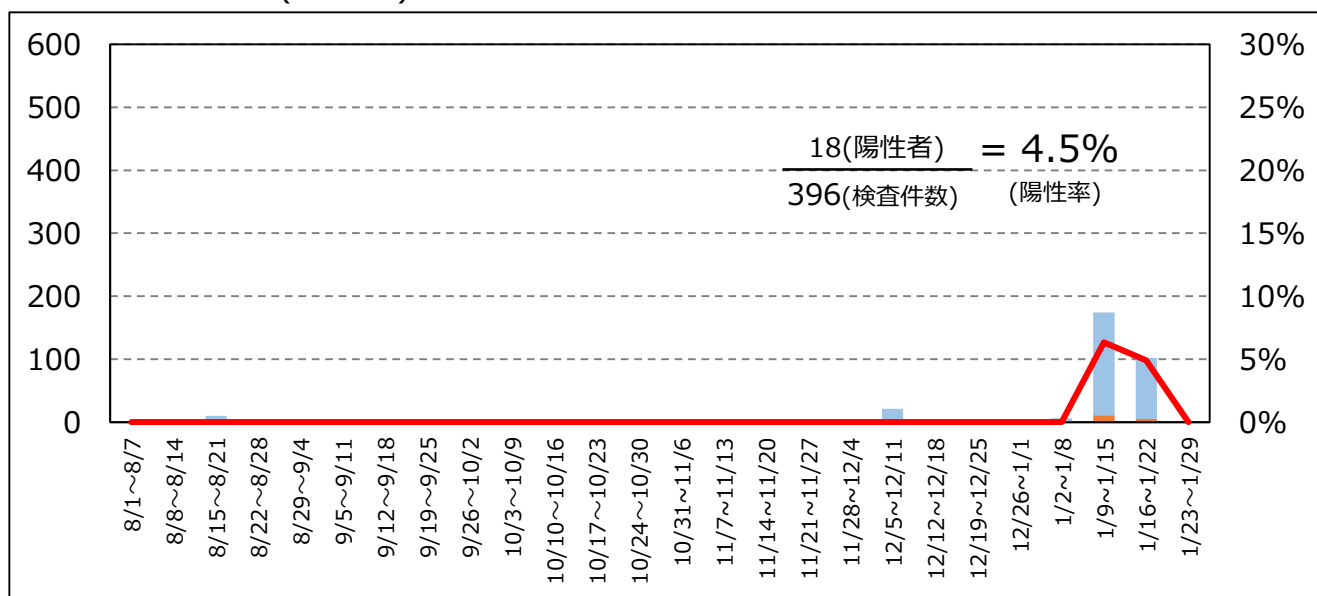
全体陽性率 (n=1,074)



疑い例検査陽性率 (n= 678)

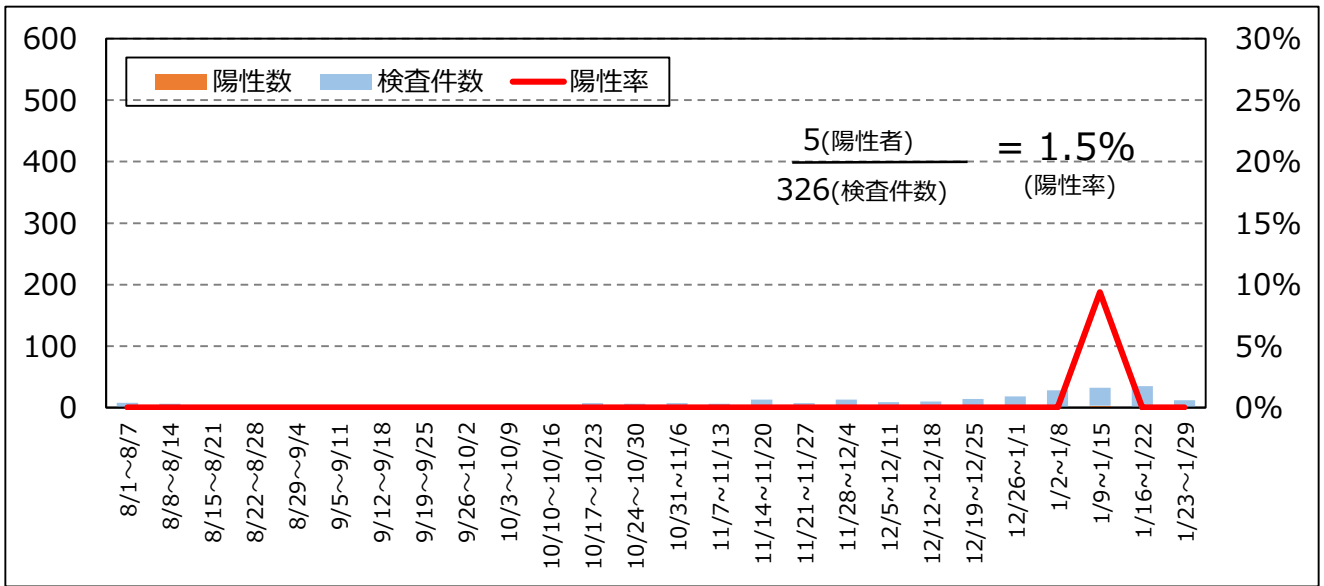


接触者検査陽性率 (n=396)

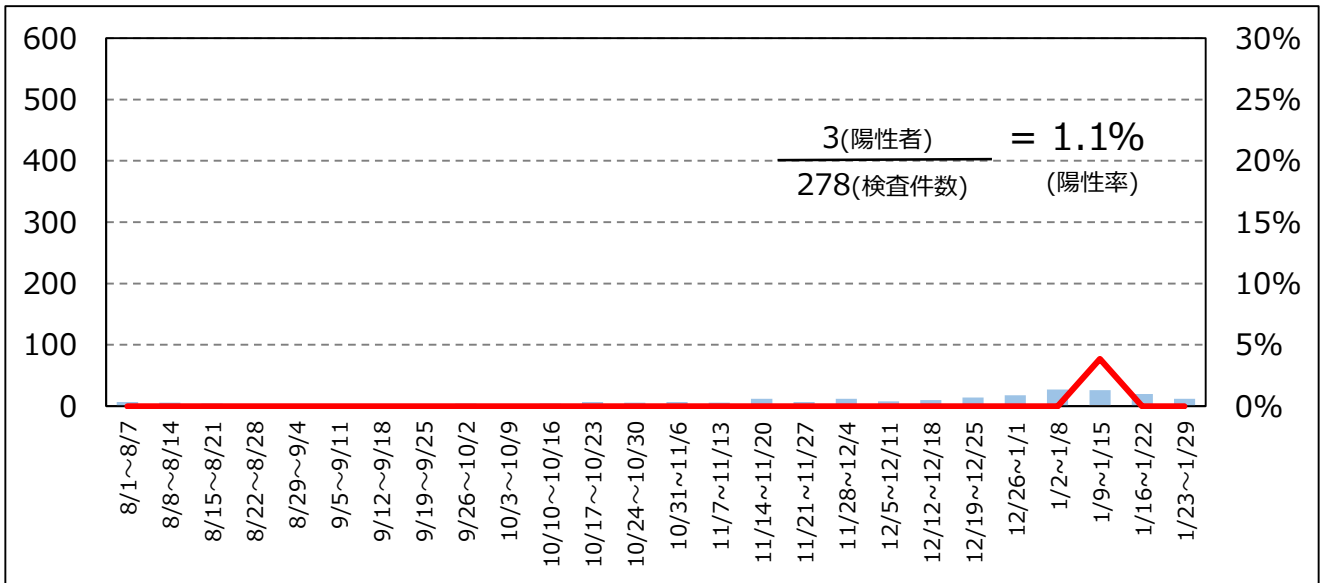


熊野保健所管内陽性率 (n=326)

全体陽性率(n=326)



疑い例検査陽性率 (n= 278)



接触者検査陽性率 (n=48)

