

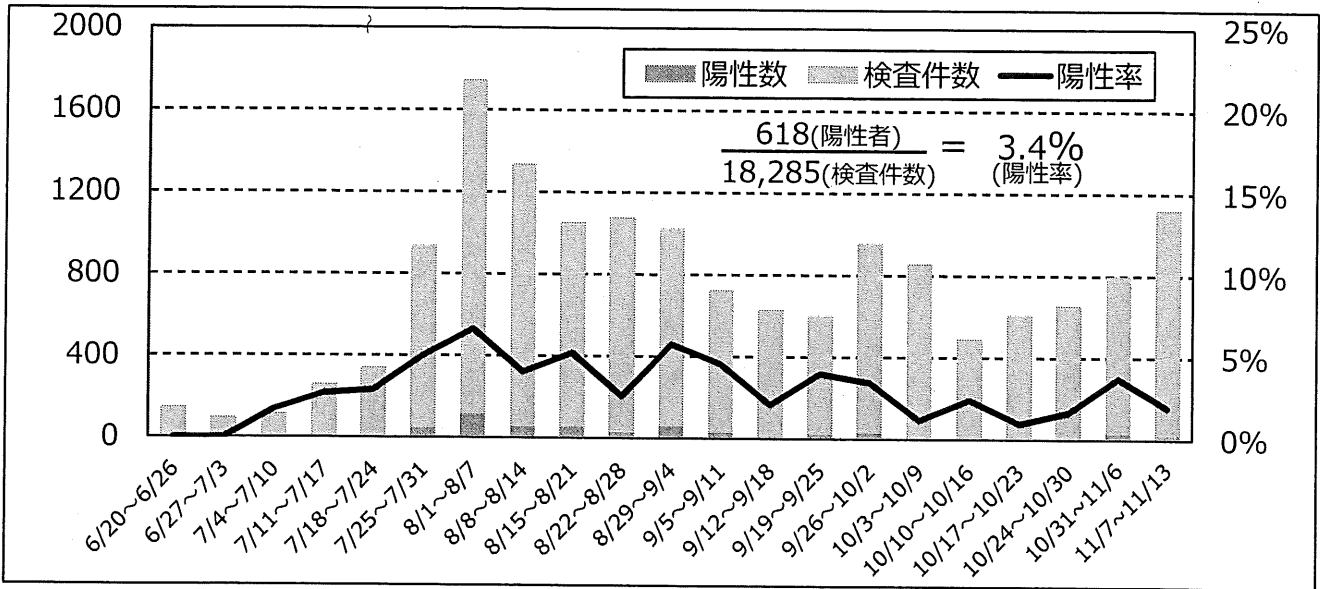
県内PCR等検査陽性率

(R2.11.13時点 n=18,285)

資料1別添

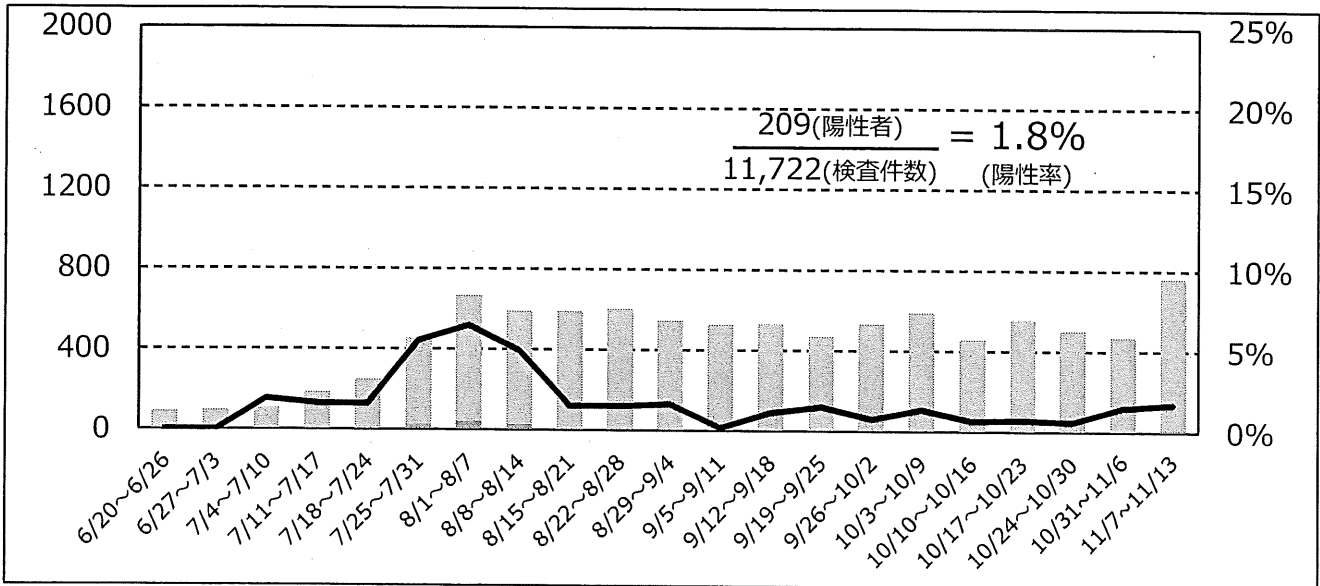
全体陽性率 (n=18,285)

※陰性確認のための検査を除く



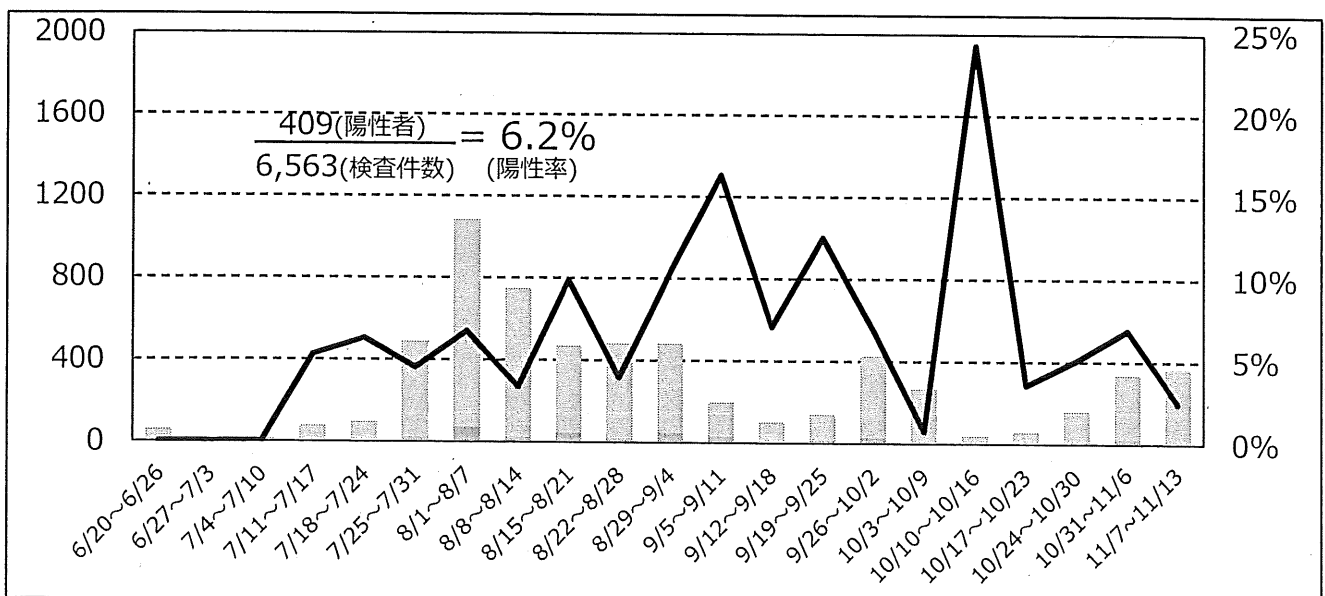
疑い例検査陽性率 (n=11,722)

※疑い例検査…疑い例として診断され、実施した検査



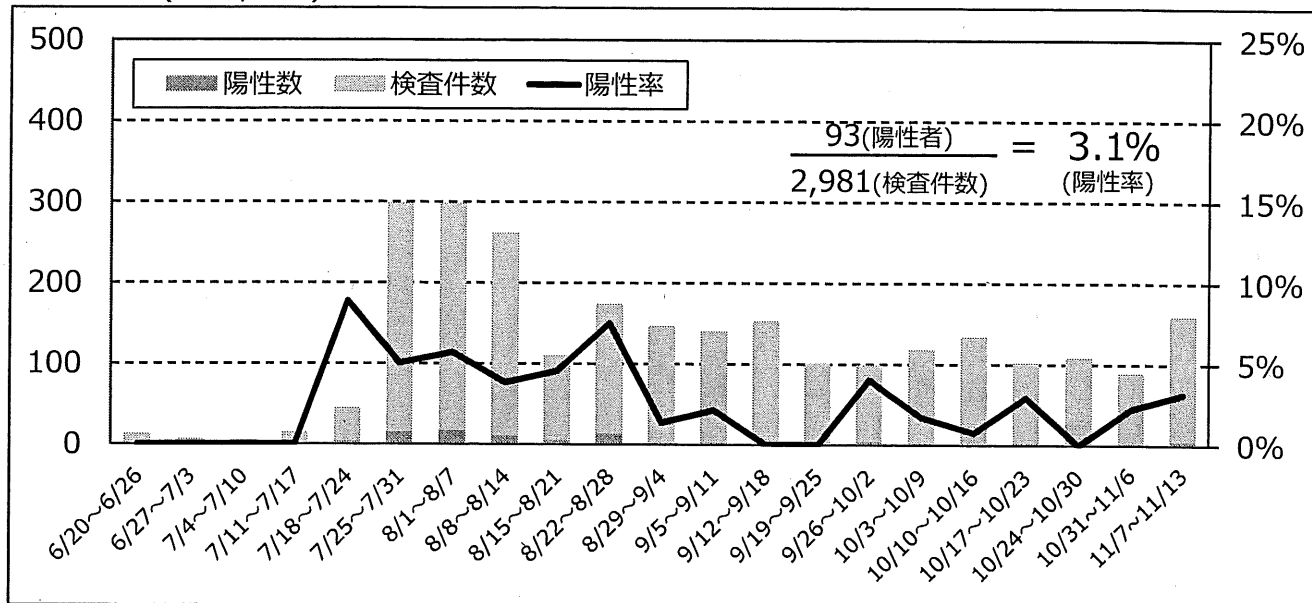
接触者検査陽性率 (n=6,563)

※接触者検査…接触者調査の一環で実施した検査

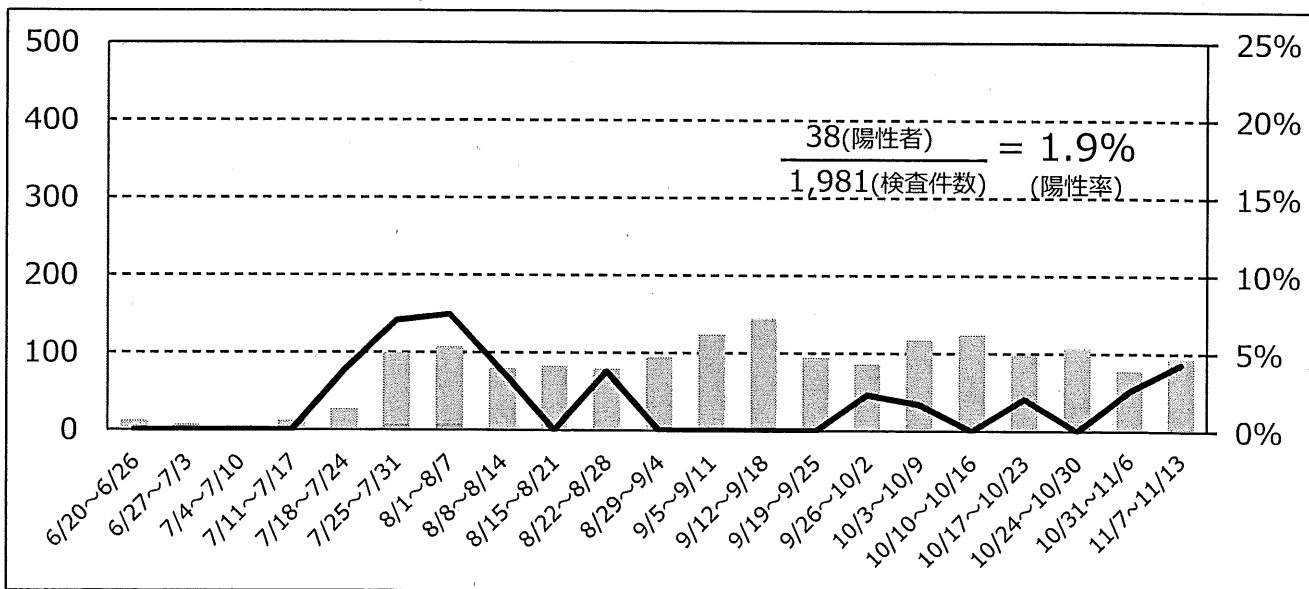


桑名保健所管内陽性率 (n=2,981)

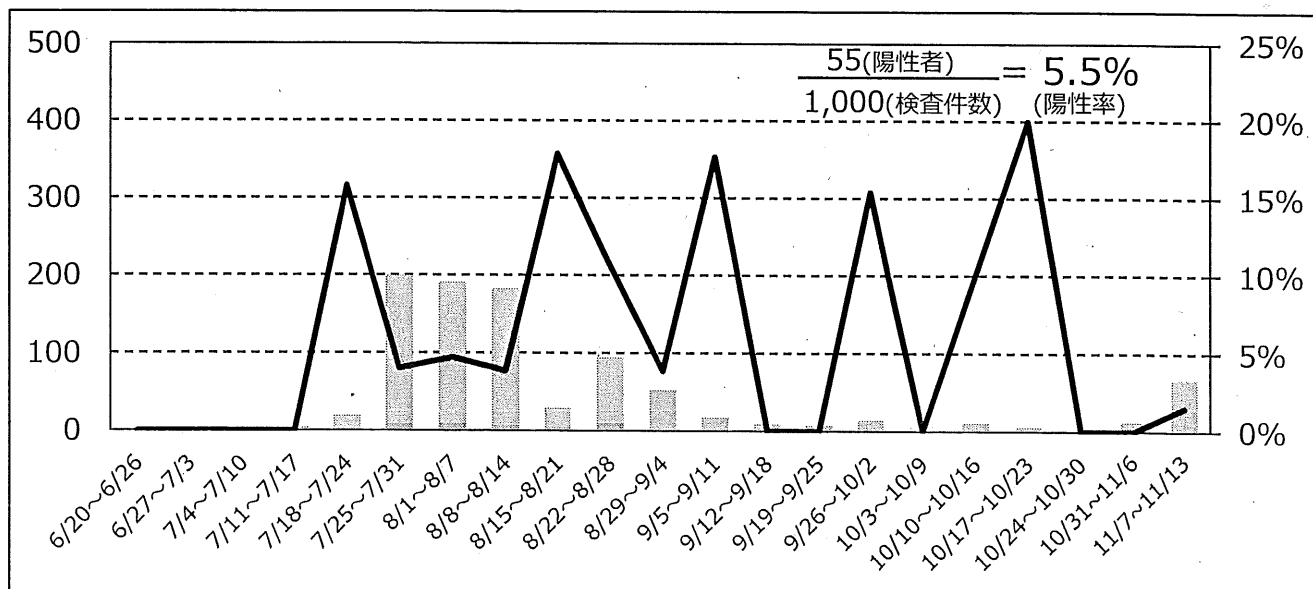
全体陽性率(n=2,981)



疑い例検査陽性率 (n=1,981)

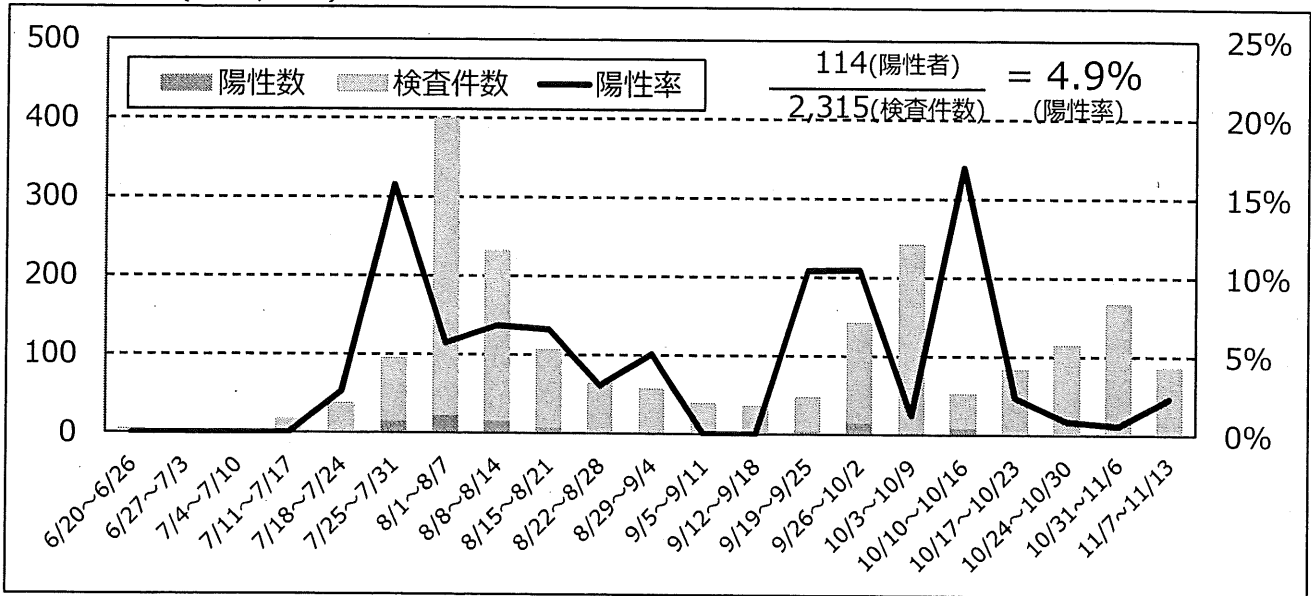


接触者検査陽性率 (n=1,000)

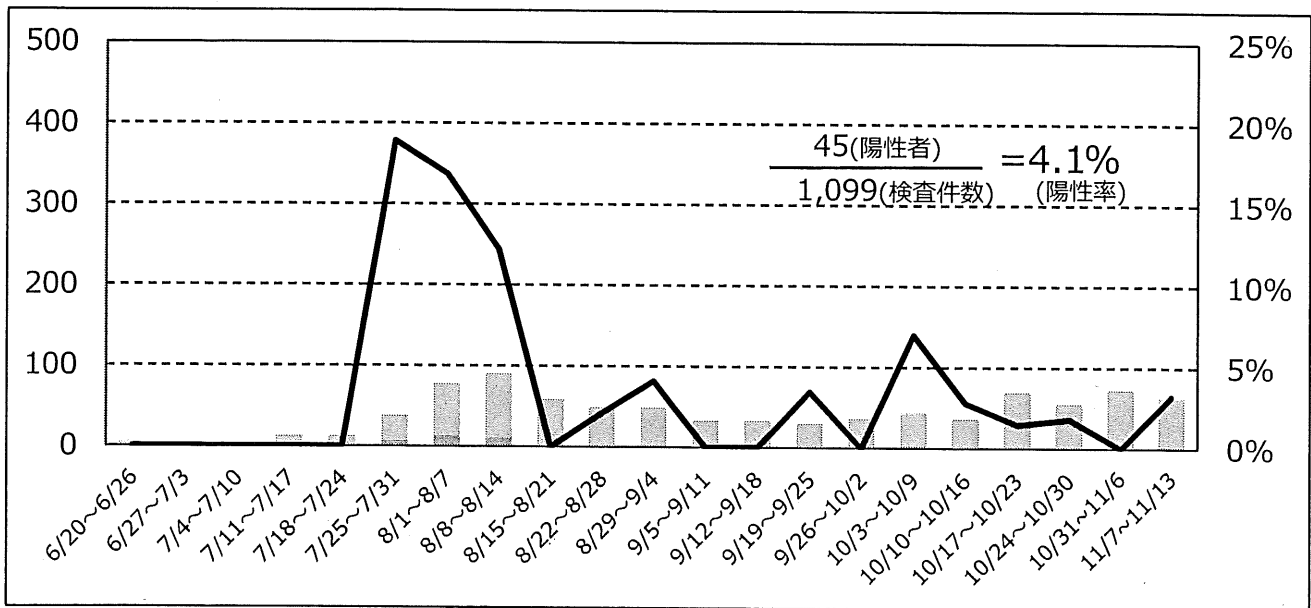


四日市市保健所管内陽性率 (n=2,315)

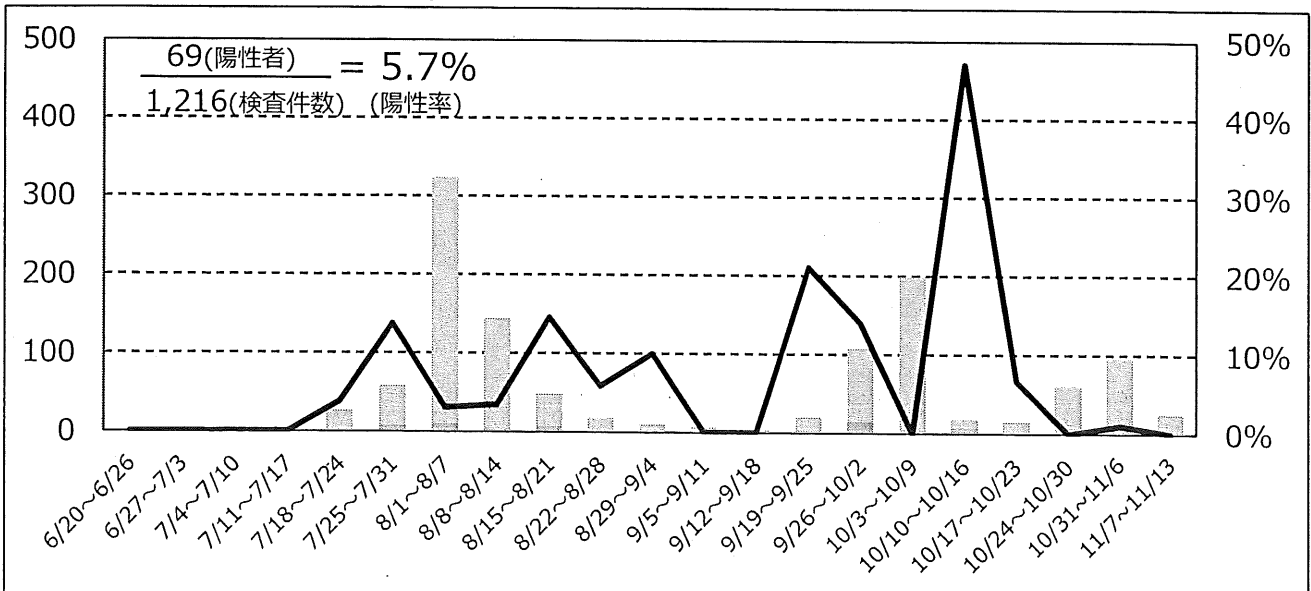
全体陽性率 (n=2,315)



疑い例検査陽性率 (n=1,099)

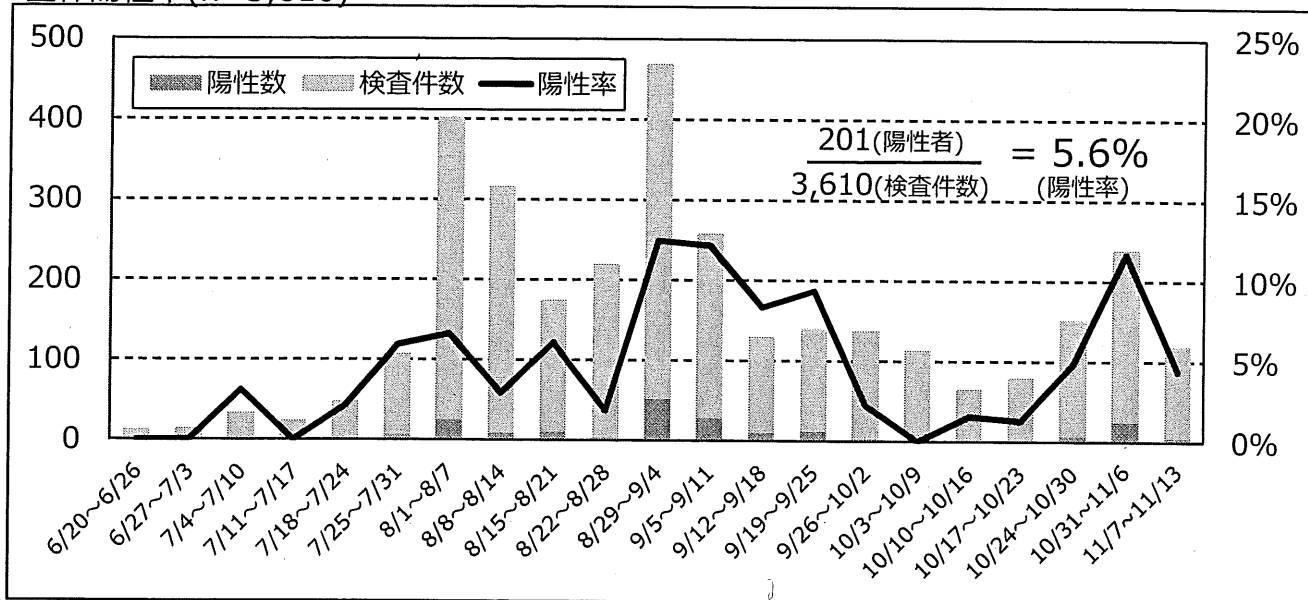


接触者検査陽性率 (n=1,216)

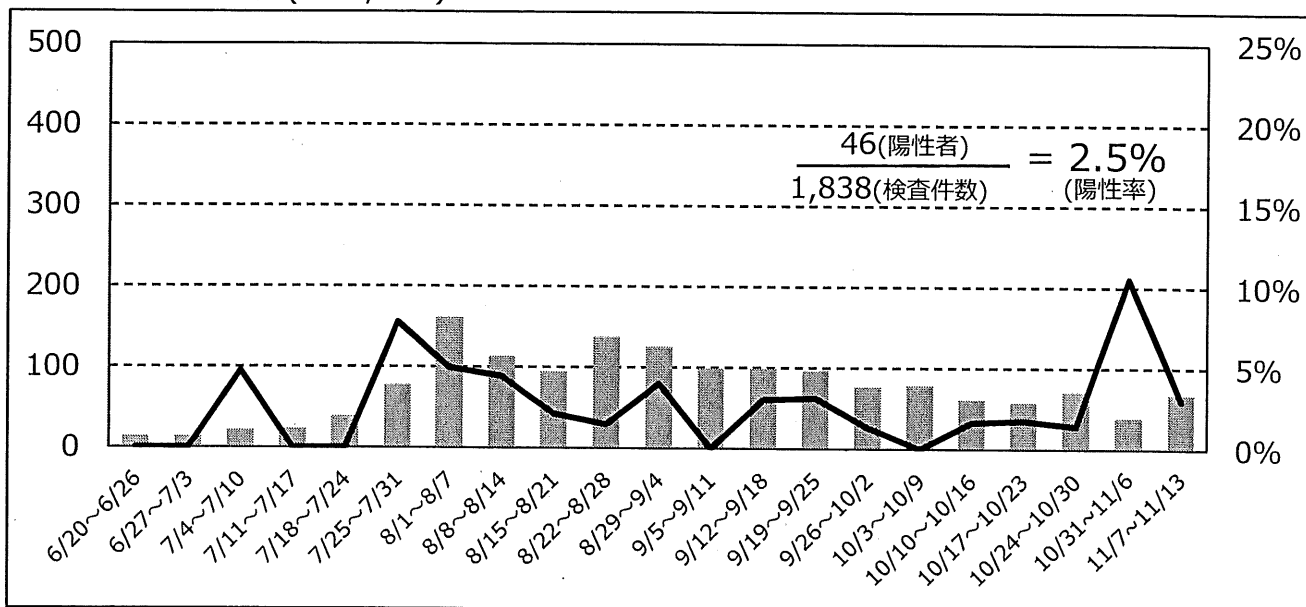


鈴鹿保健所管内陽性率 (n=3,610)

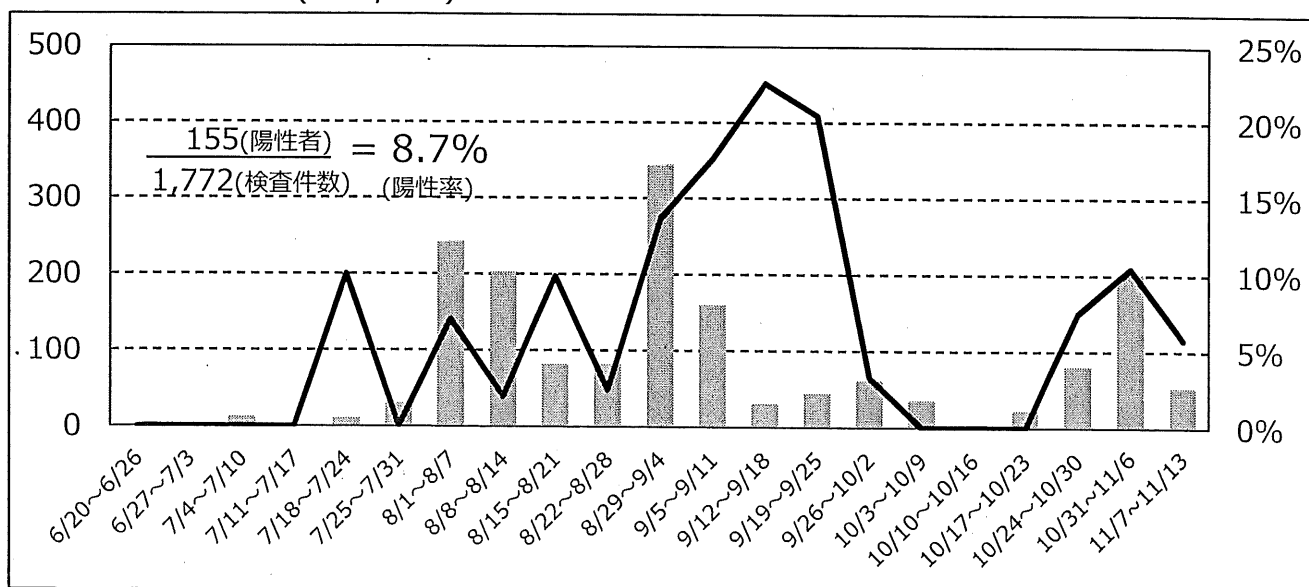
全体陽性率(n=3,610)



疑い例検査陽性率 (n=1,838)

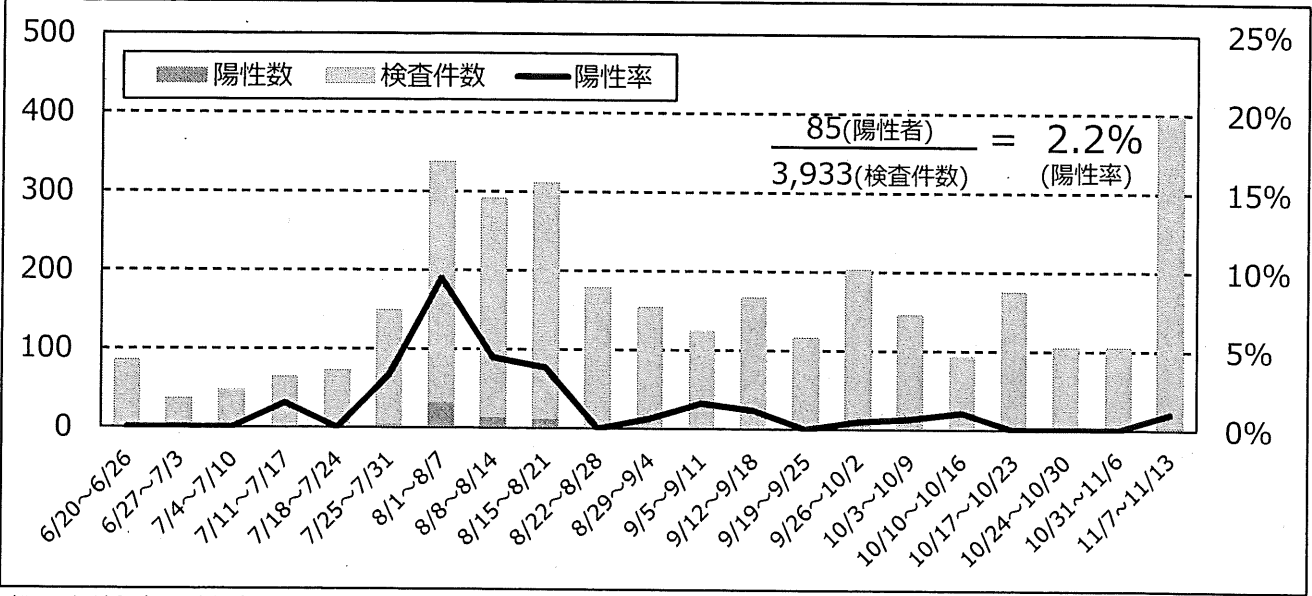


接触者検査陽性率 (n=1,772)

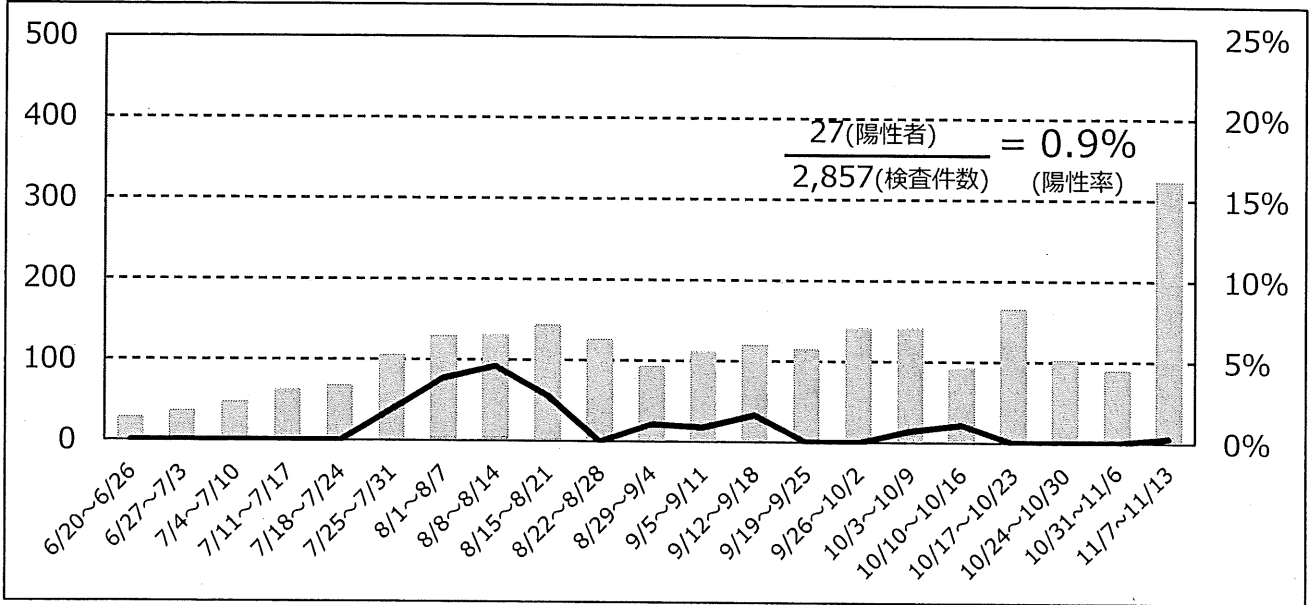


津保健所管内陽性率 (n=3,933)

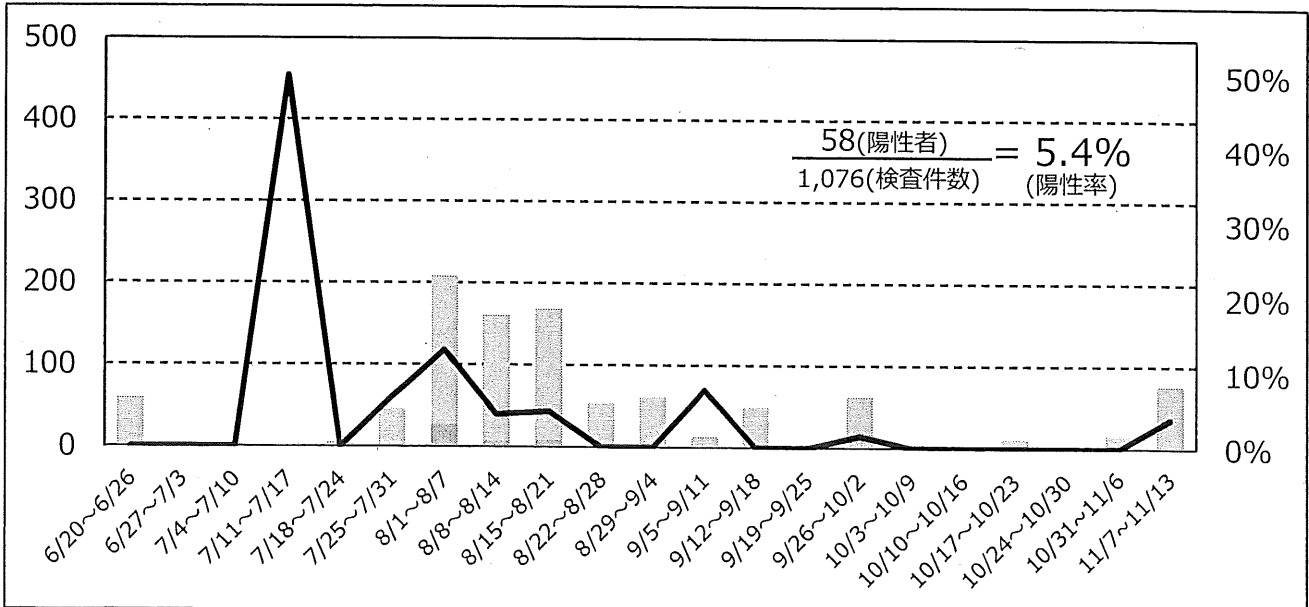
全体陽性率(n=3,933)



疑い例検査陽性率 (n=2,857)

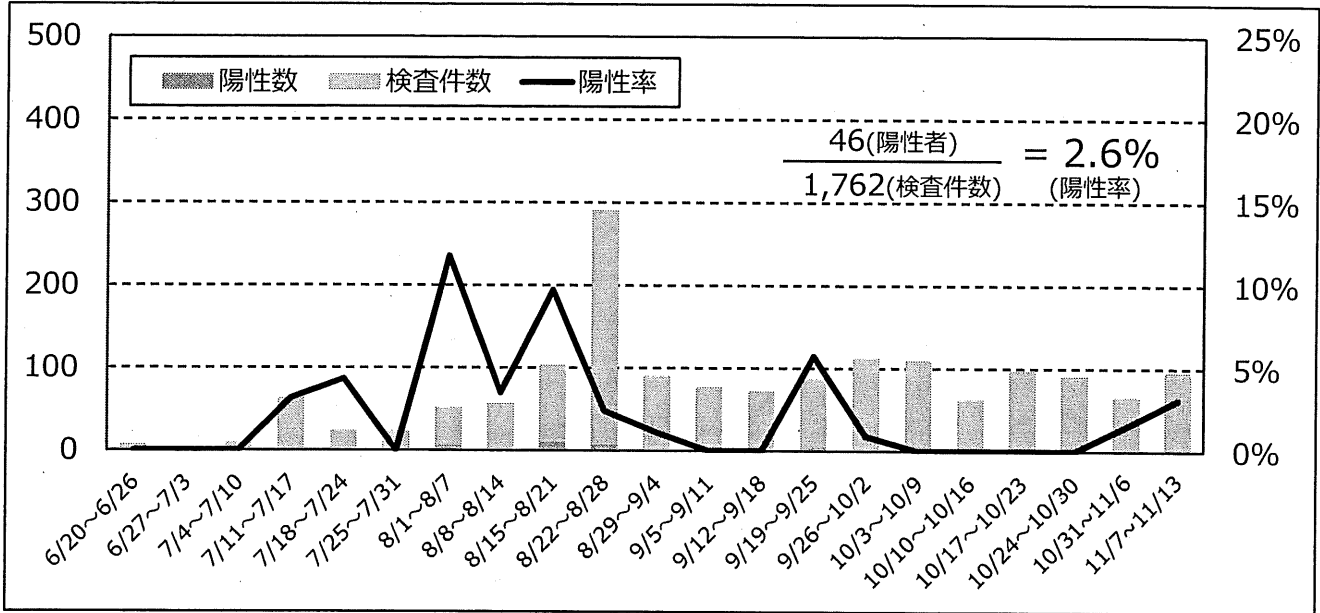


接触者検査陽性率 (n=1,076)

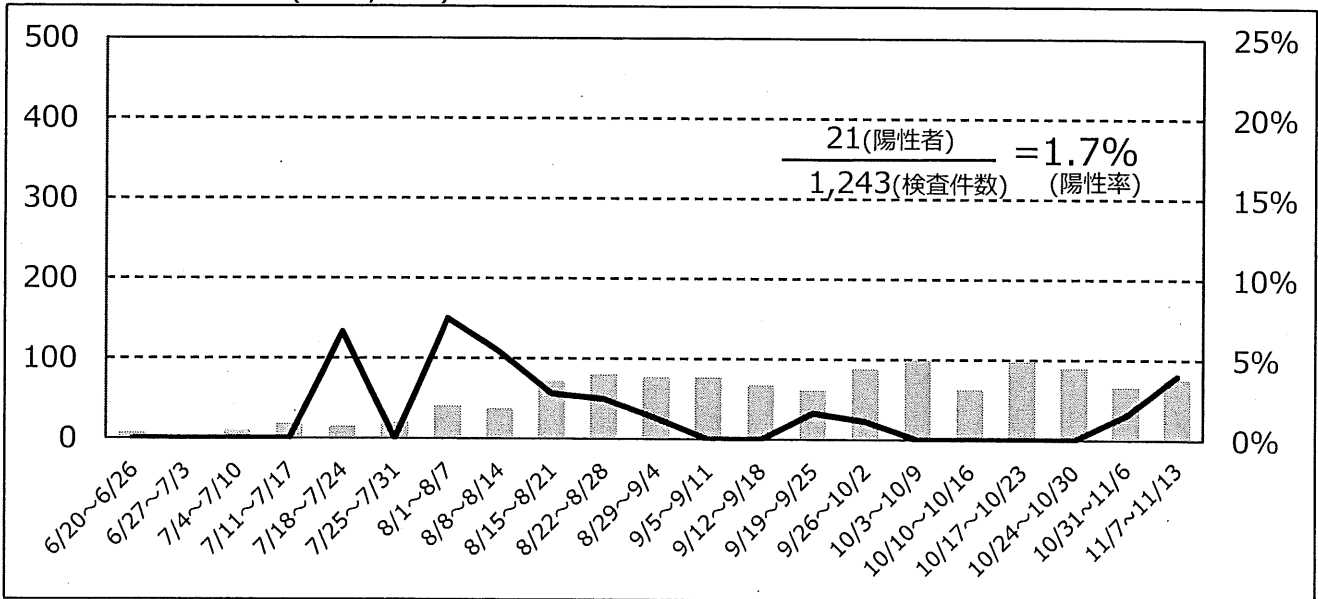


松阪保健所管内陽性率 (n=1,762)

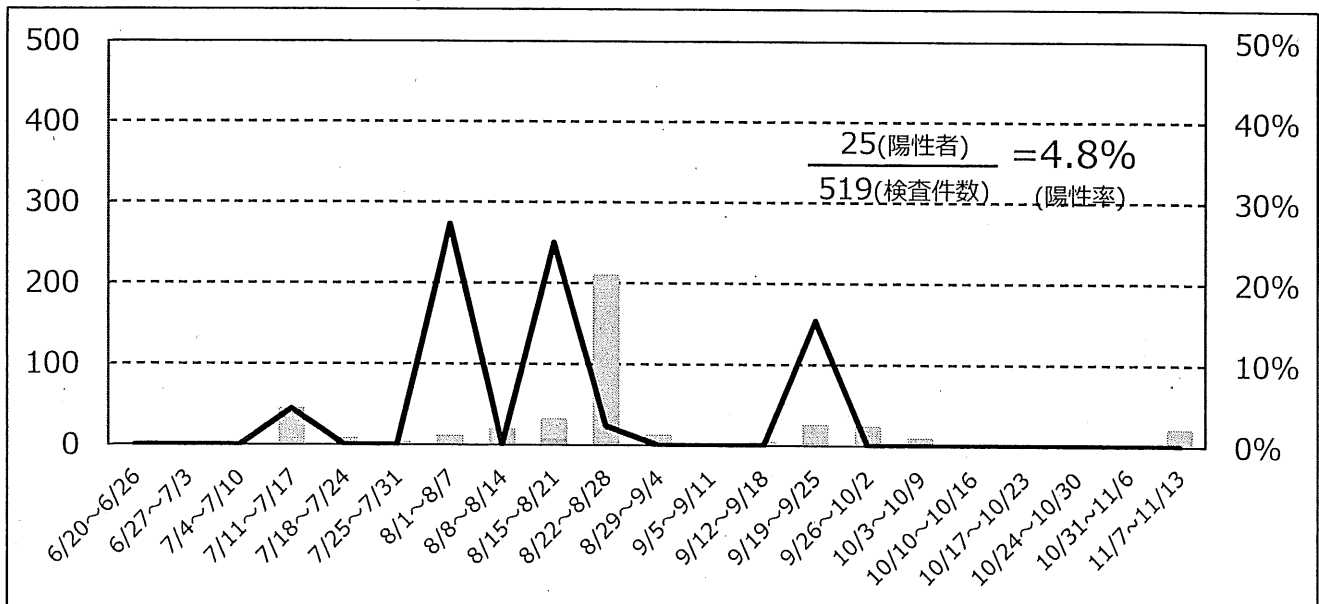
全体陽性率 (n=1,762)



疑い例検査陽性率 (n=1,243)

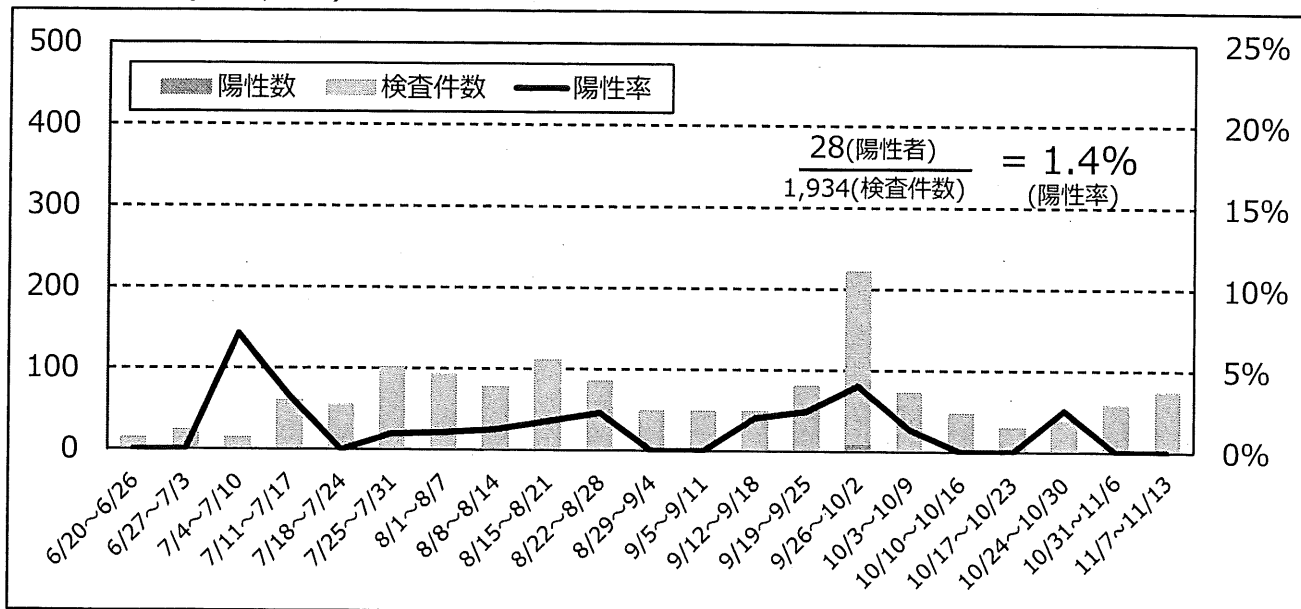


接触者検査陽性率 (n=519)

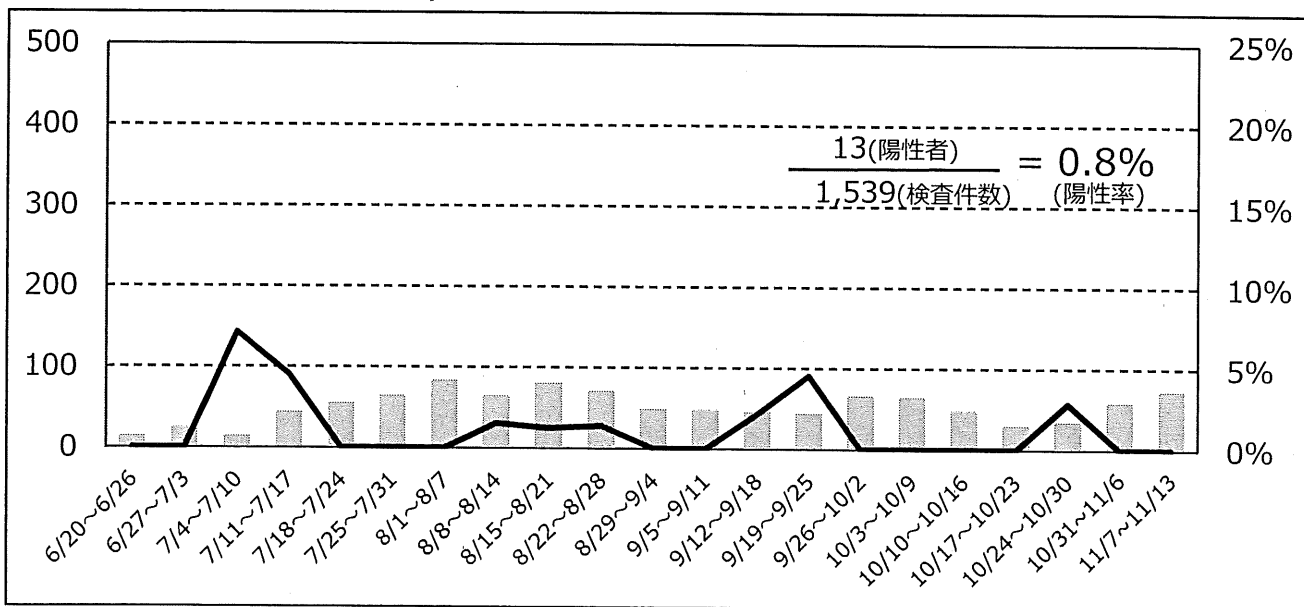


伊勢保健所管内陽性率 (n=1,934)

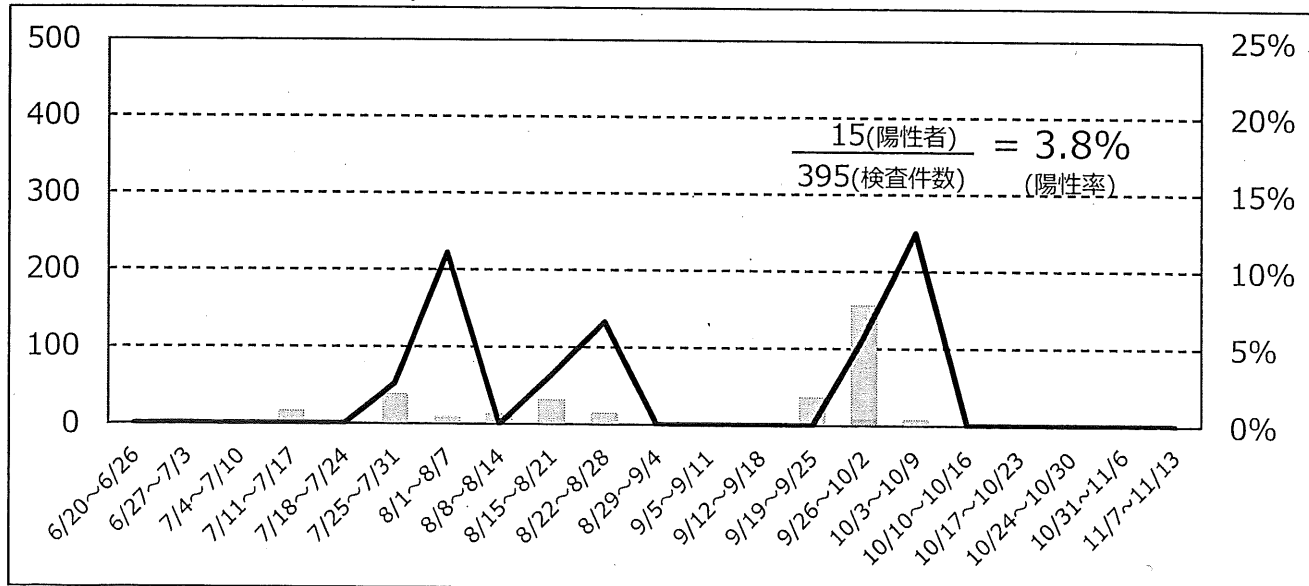
全体陽性率(n=1,934)



疑い例検査陽性率 (n=1,539)

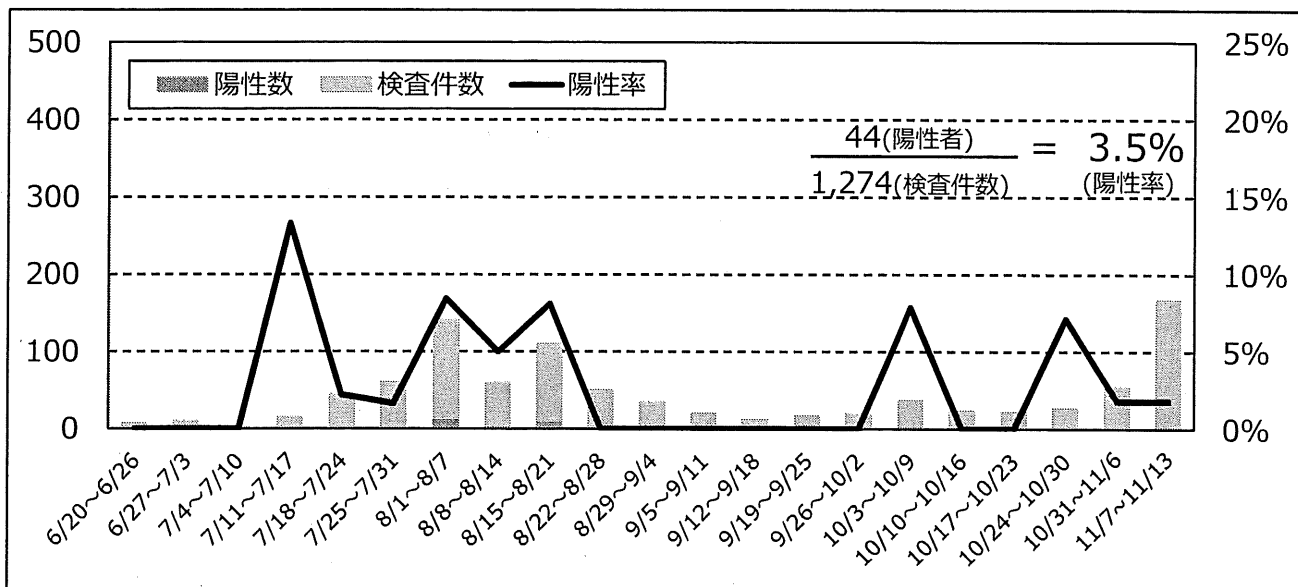


接触者検査陽性率 (n=395)

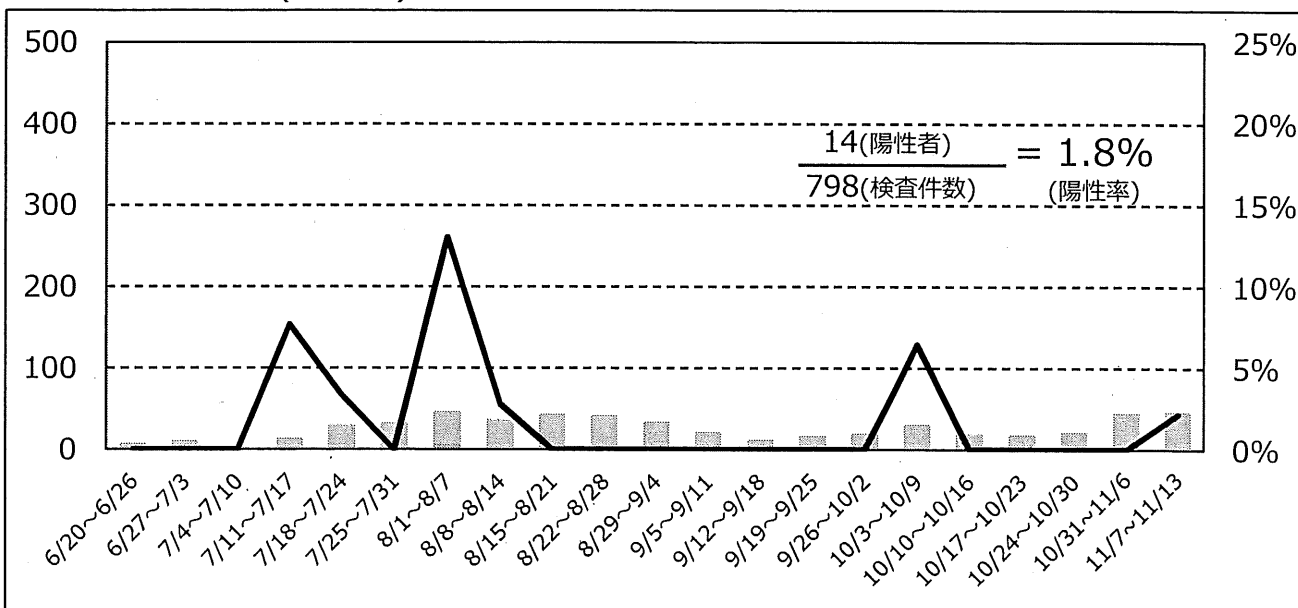


伊賀保健所管内陽性率 (n=1,274)

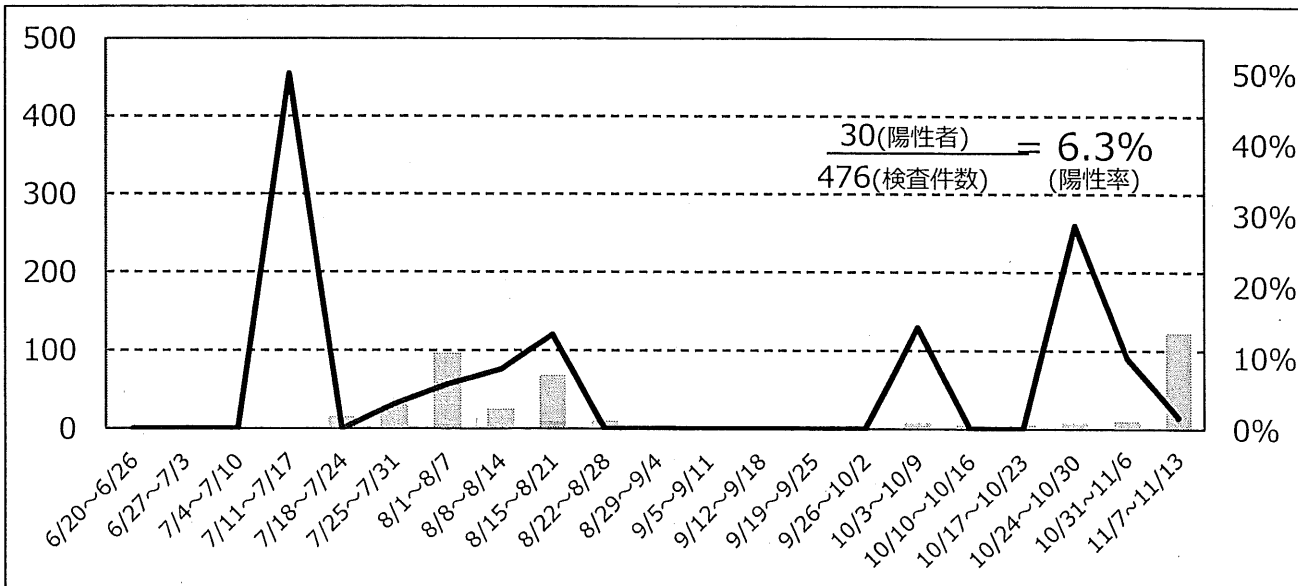
全体陽性率(n=1,274)



疑い例検査陽性率 (n=798)

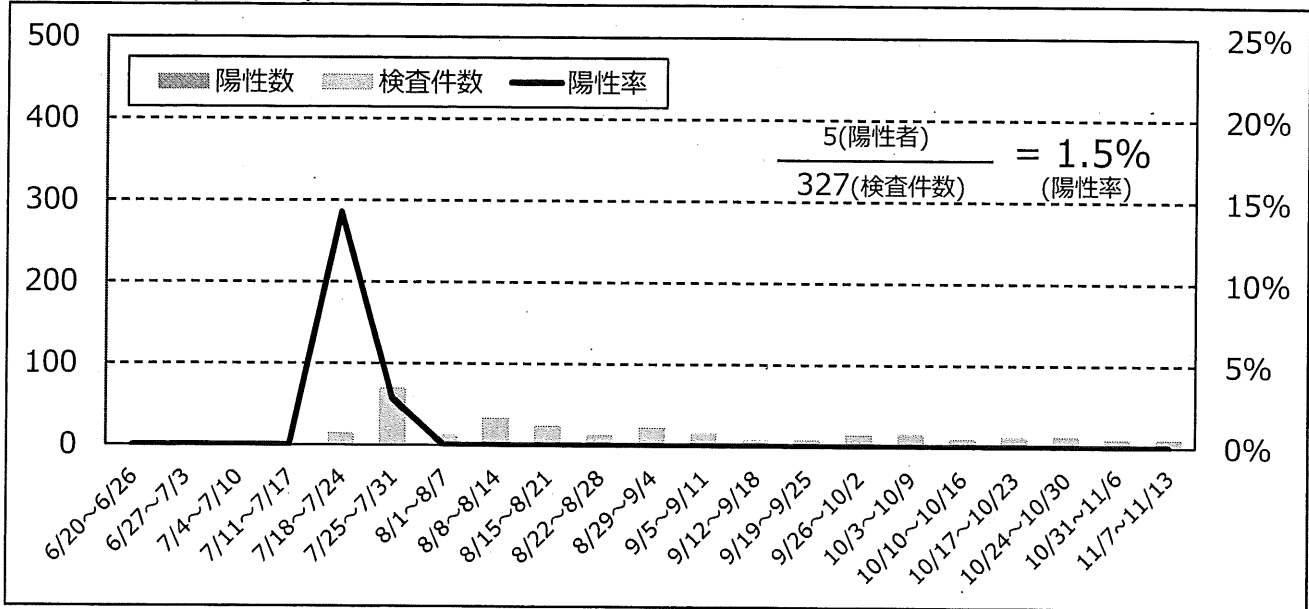


接触者検査陽性率 (n=476)

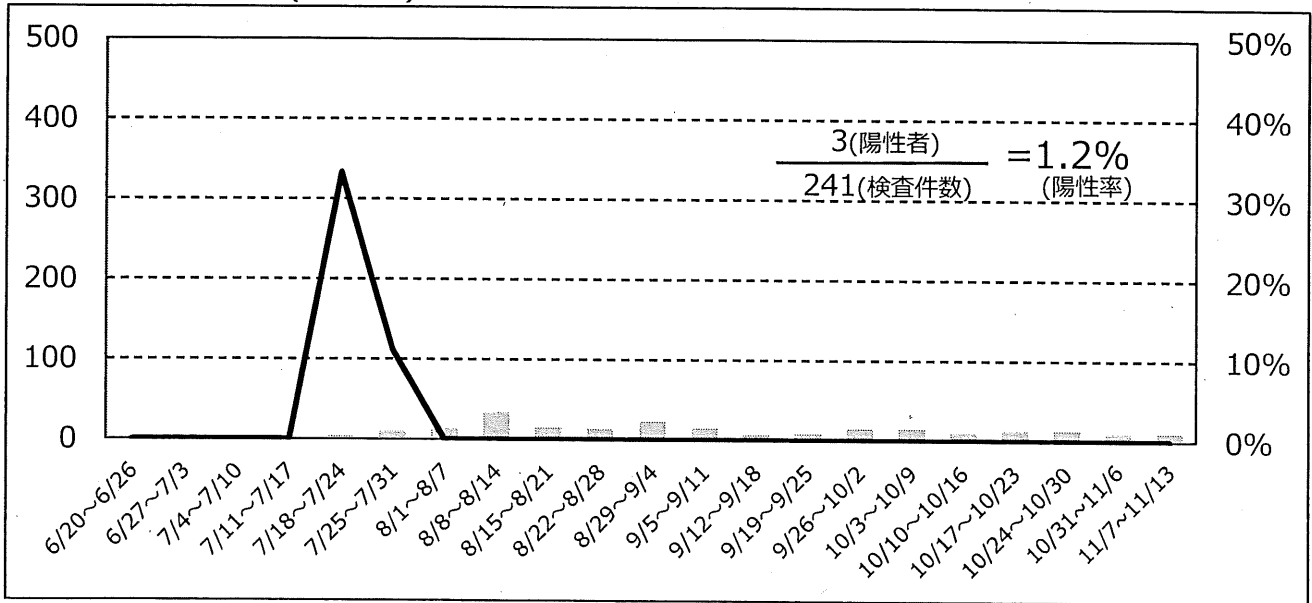


尾鷲保健所管内陽性率 (n=327)

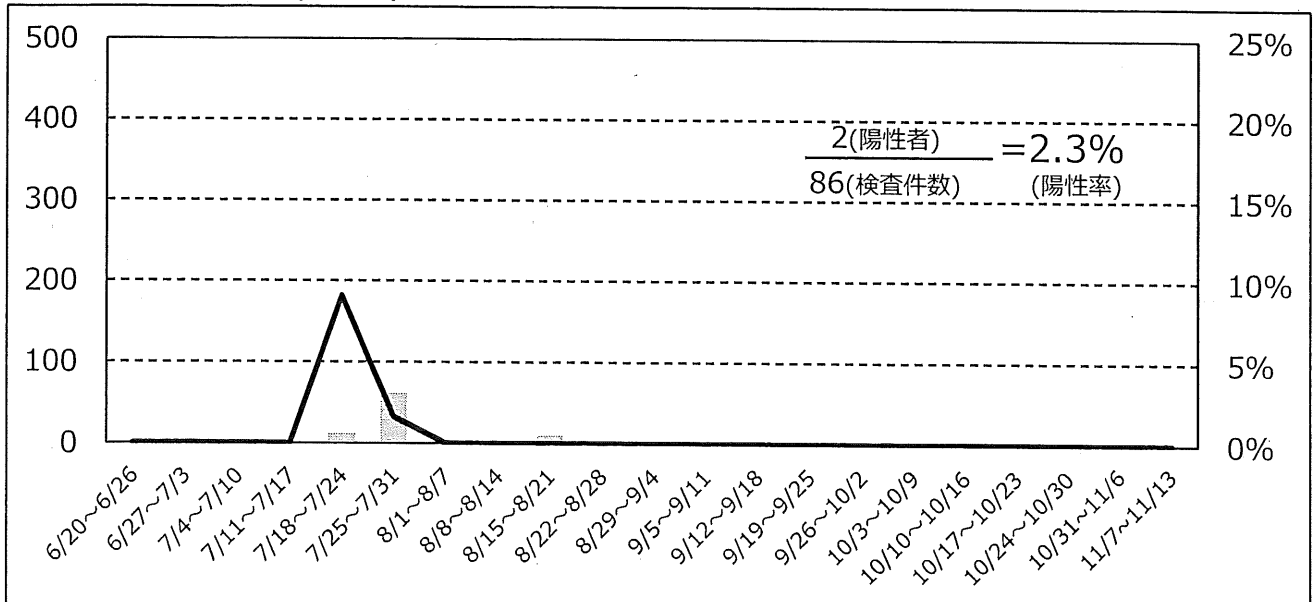
全体陽性率 (n=327)



疑い例検査陽性率 (n=241)

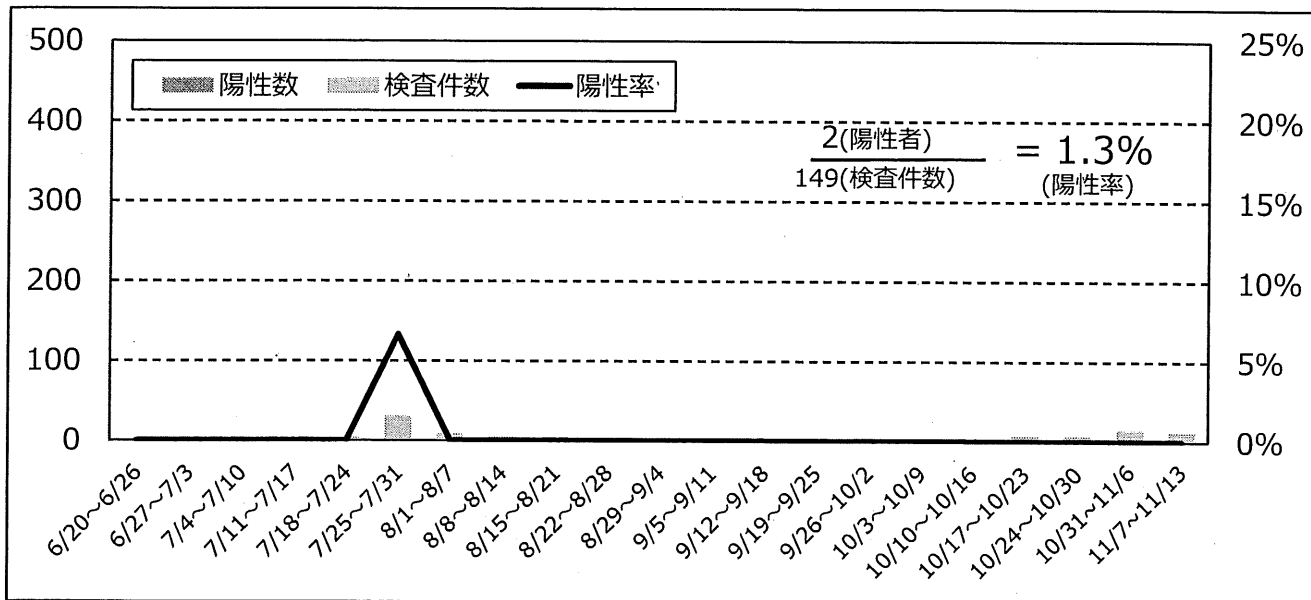


接触者検査陽性率 (n=86)

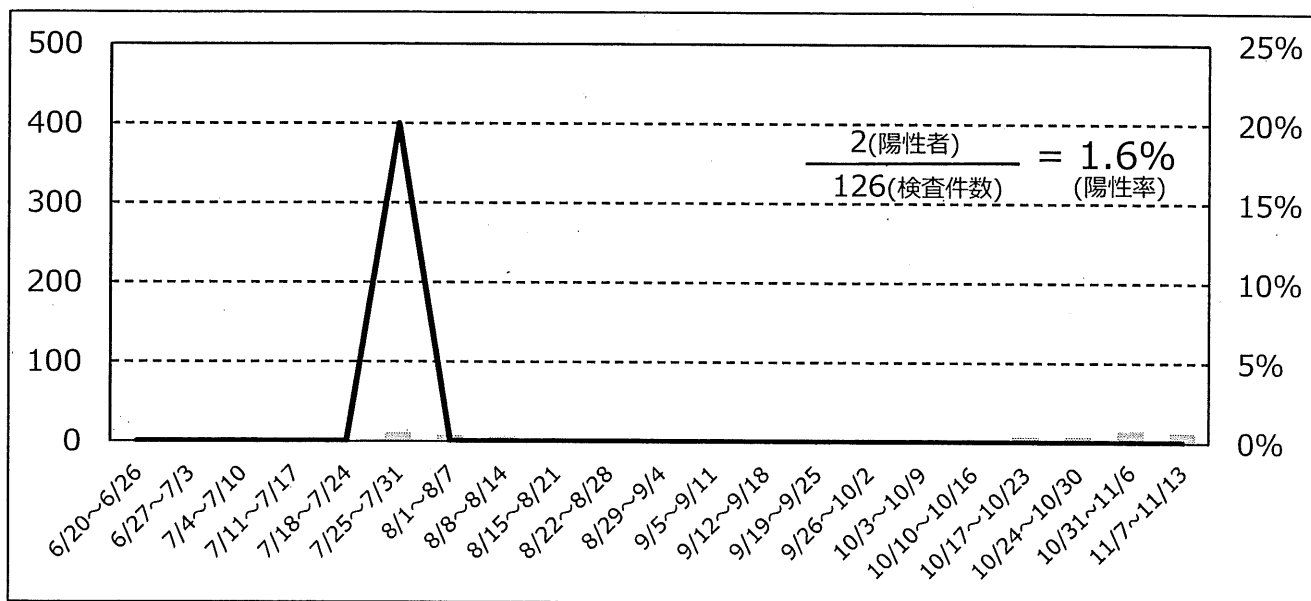


熊野保健所管内陽性率 (n=149)

全体陽性率(n=149)



疑い例検査陽性率 (n=126)



接触者検査陽性率 (n=23)

