

広域

津市榑原町

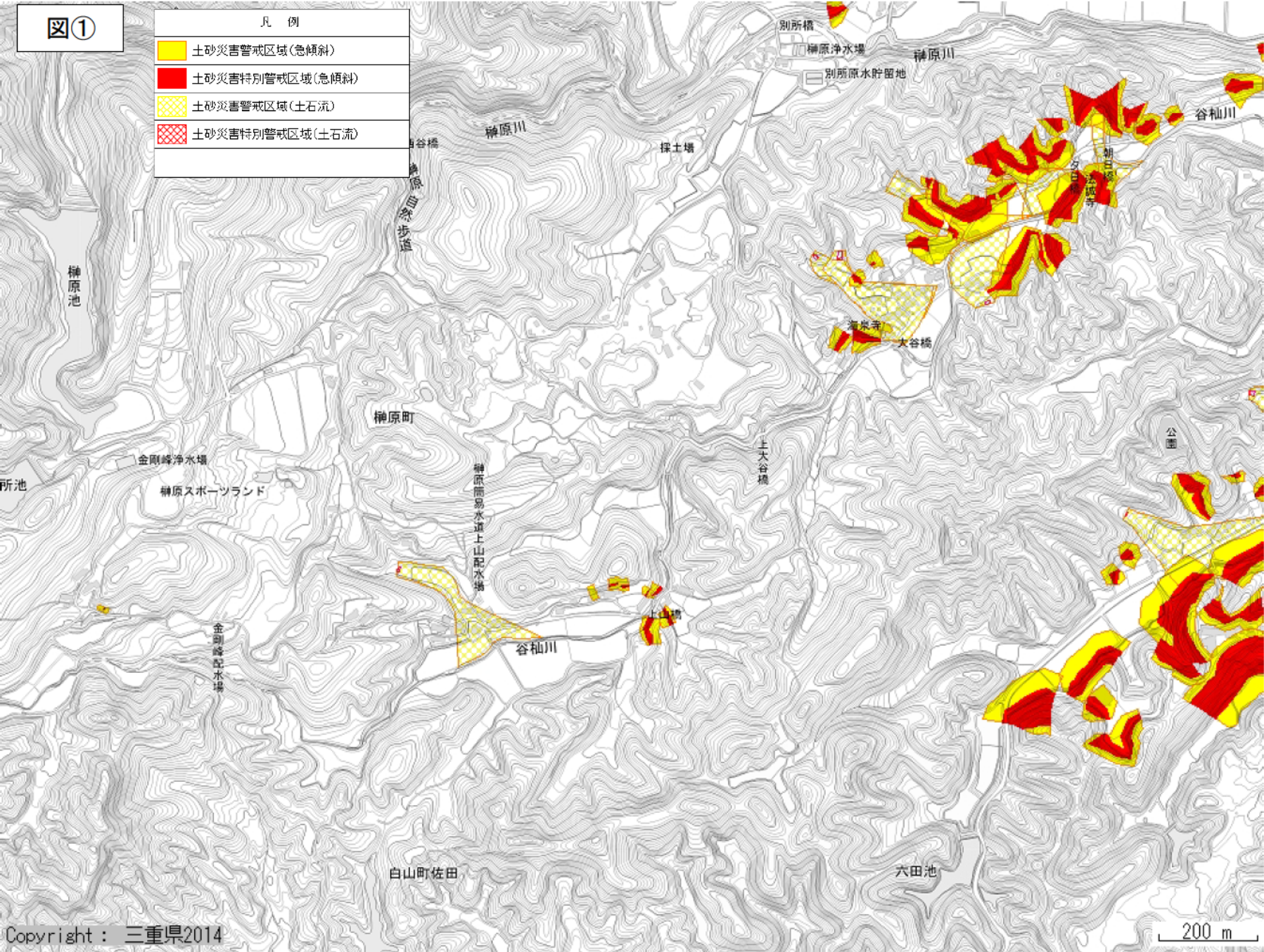
Copyright : 三重県2014

5000 m







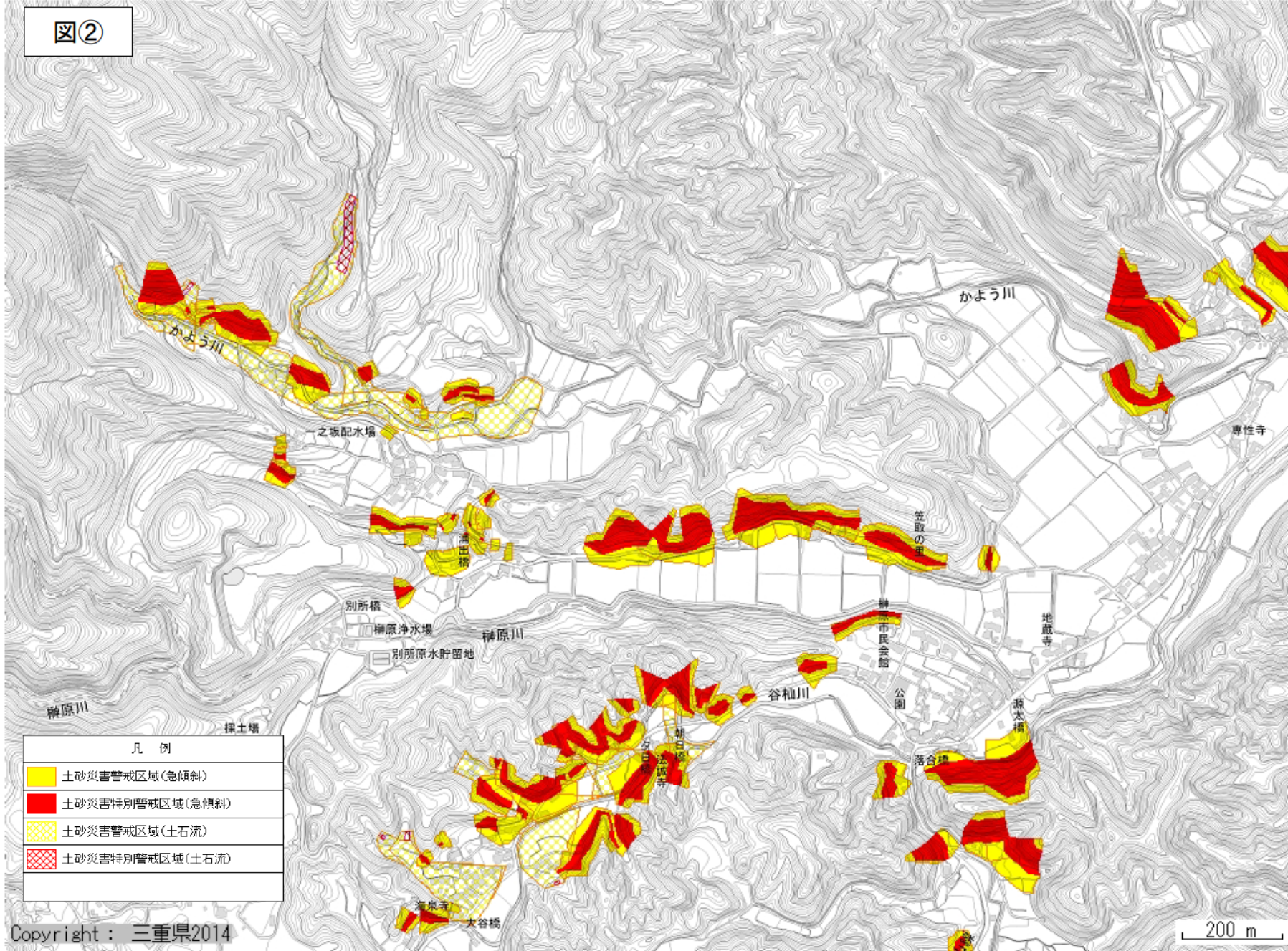


図①

凡 例	
<span style="background-color: yellow; border: 1px solid black; display: inline-block; width: 15px; height: 10px;"></span>	土砂災害警戒区域(急傾斜)
<span style="background-color: red; border: 1px solid black; display: inline-block; width: 15px; height: 10px;"></span>	土砂災害特別警戒区域(急傾斜)
<span style="background-color: yellow; border: 1px solid black; border-style: dashed; display: inline-block; width: 15px; height: 10px;"></span>	土砂災害警戒区域(土石流)
<span style="background-color: red; border: 1px solid black; border-style: dashed; display: inline-block; width: 15px; height: 10px;"></span>	土砂災害特別警戒区域(土石流)

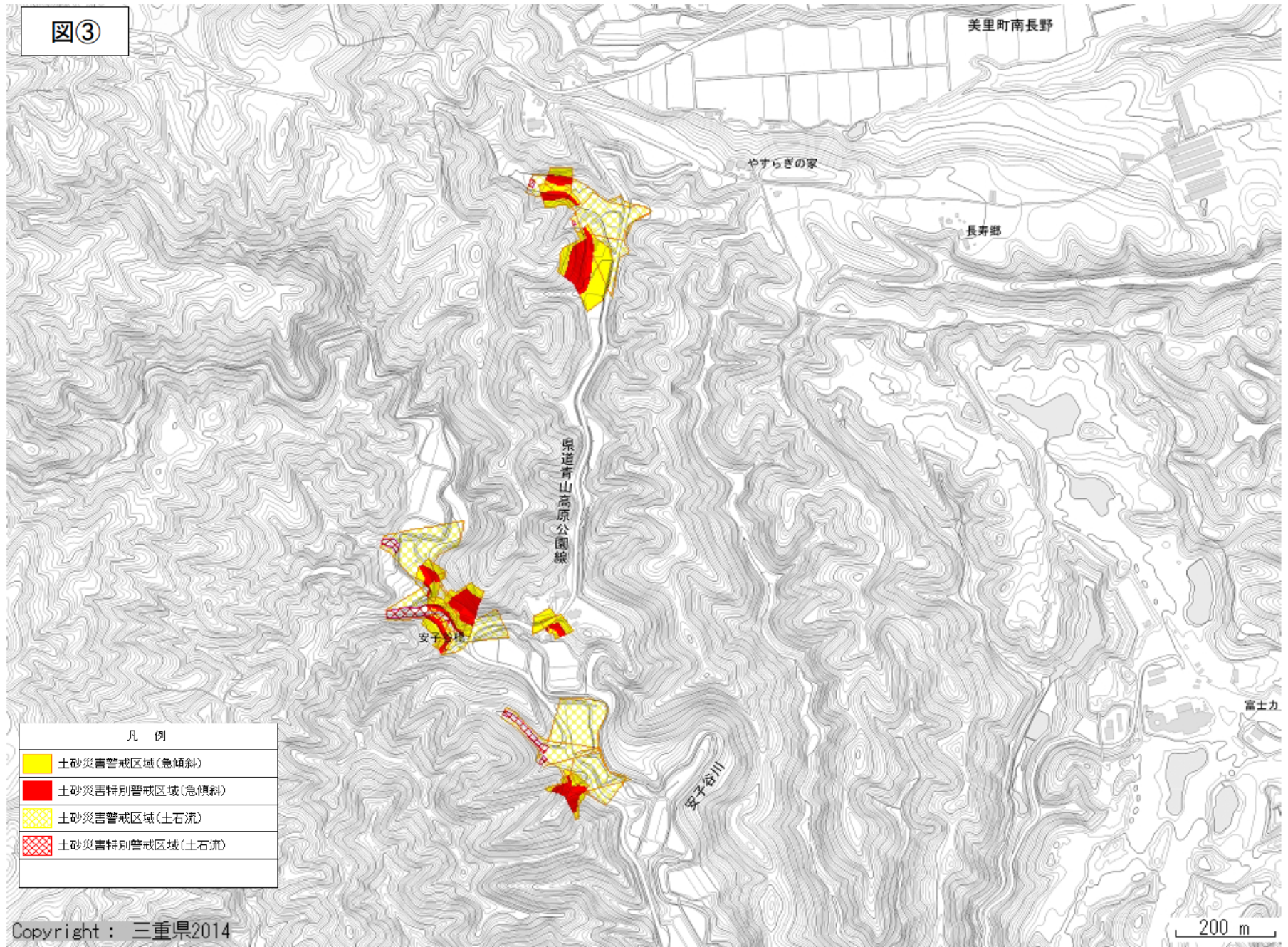


図②



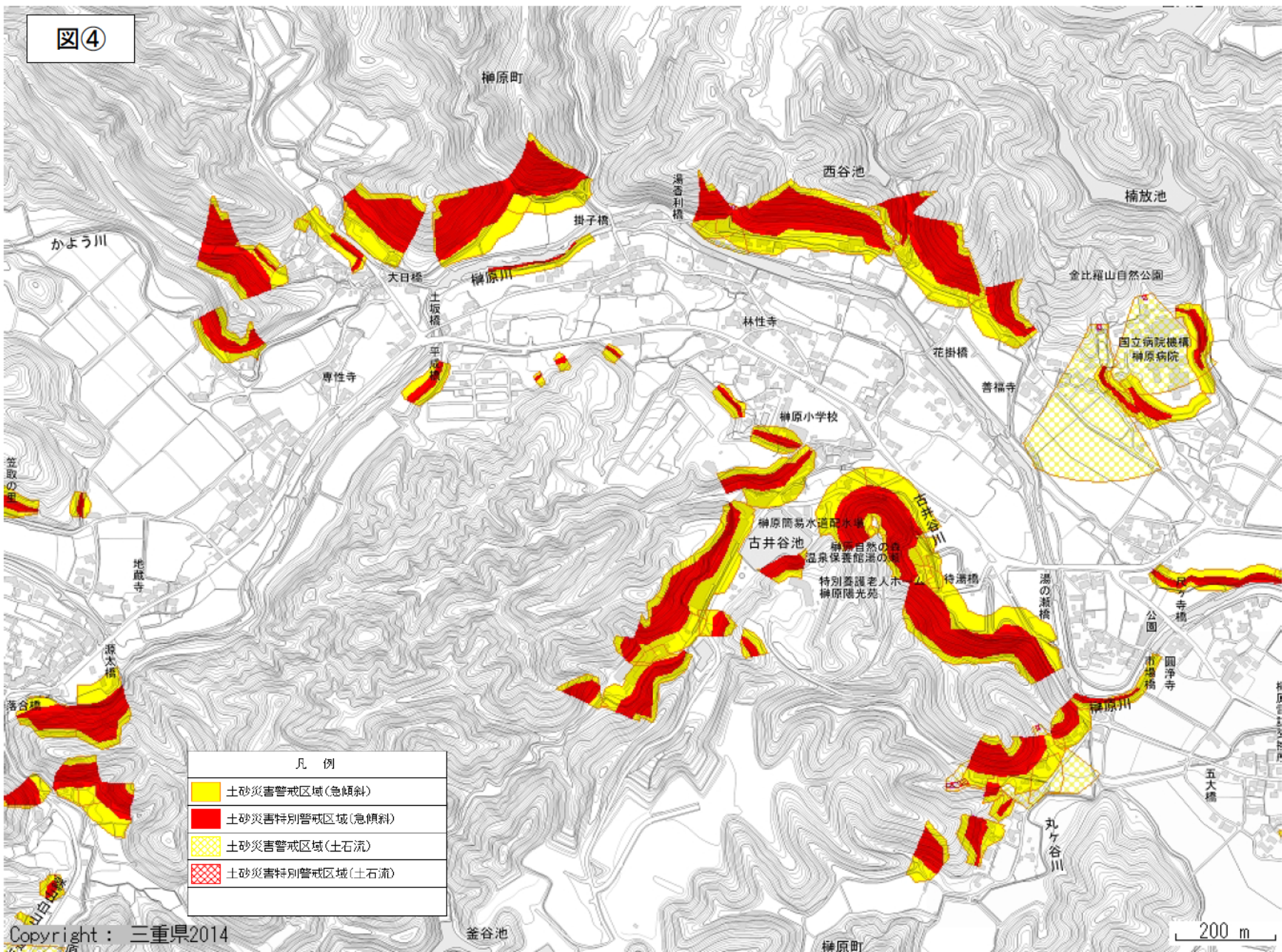


図③



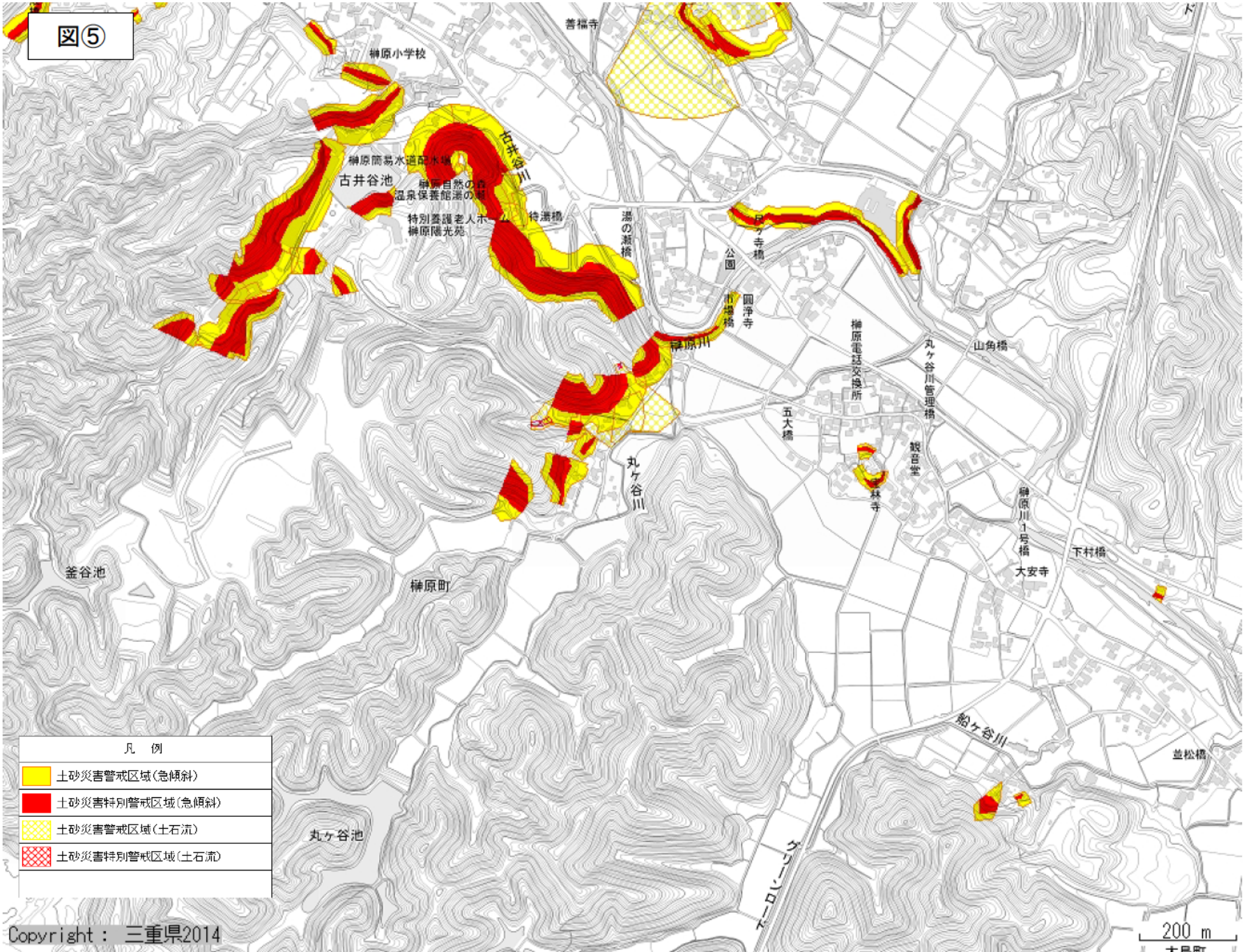


図④





図⑤





図⑥

