

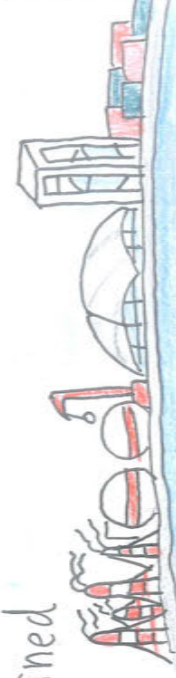
# Yokkaichi Port

四日市立港中学校

2

中尾 雪菜

I live in Yokkaichi city. Yokkaichi is one of the biggest industrial cities in Japan. Industrial complexes are lined along the coastal region of Yokkaichi, and Yokkaichi has an international port! Inaba Sanuemon built the port in 1473. It has a long history. Yokkaichi Port is now, in the top ten of domestic ports and has many interesting spots. I'll introduce you some attractive places I like!



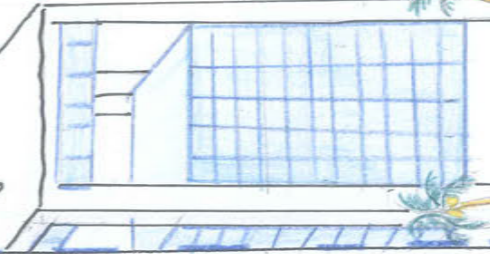
## Yokkaichi Port Night Cruise

Yokkaichi Port is one of Japan's most famous spots for beautiful nighttime illumination. A night cruise lets you enjoy the view of Yokkaichi Industrial complex from the sea. The port shines glitterly and factory night lovers call there "Holly Land". I also recommend to visit Yokkaichi Port Tower at night.



## Yokkaichi Port Tower

The tower was built in 1999 to celebrate the 100<sup>th</sup> anniversary of the opening of the port. It's 100 m high. At the 14<sup>th</sup> floor of the building, there are some exhibitions to learn about the port. If it's clear, you can see a great view!



The view from Port Tower

## Sydney Park

In 1968, Yokkaichi port connected the sister port tie-up with Sydney port in Australia. Yokkaichi imported wool from Sydney. There are two parks called "Kasumi park" and "Sydney Park SYSPA (Sydney Yokkaichi Sister Port Affiliation) bridge connects two parks. In Sydney Street, there is a statue of kangaroos. Please visit and take photos with cute kangaroos!



## Fireworks

Many people go and watch fireworks display. It's held at the port every August. They're really gorgeous! You should go there!!

Yokkaichi Port is a fantastic place. I'm proud of my home town. Why don't you visit Yokkaichi Port?

(テーマを選んだ理由)

社会科学の自由研究で四日市中の国際交流について調べた時に四日市港に行きました。四日市港のポートタワーでは、きれいな景色が見れて、四日市港について、詳しく知ることができました。四日市港の魅力や素晴らしさを世界中の人に伝えたいと思い、このテーマを選びました。