

Amazing "Ise Katagami" ~ master craftsmanship ~

三重大学教育学部附属中学校

3年 松本 芽々

I've heard that "Ise Katagami" attracted the foreign people at the G7 Ise Shima Summit last year. The designs of "Ise Katagami" were used on the guide board of the elevator hall at the summit site, as a gift for the guests who came to the summit, and so on.

"Ise Katagami" is a traditional craft of Suzuka-city. It's originally a paper pattern of kimono. It is said that there's a history of more than 1000 years. It's unique because they use special paper suitable for carving and dyeing. It's made by hand crafted by skilled craftsmen. It uses several laminated thin Japanese papers in persimon juice to make the paper. Also, the skill of the craftsman is really wonderful, and we feel infinite possibilities of human hands by the sophisticated patterns and designs.

There are 4 kinds of carving, Shimaboti, Tsukibori, Dougubori, and Kiribori.

Shimaboti

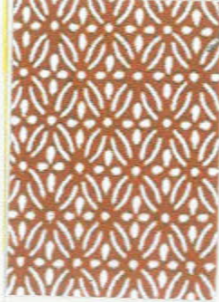
Put a small knife on the steel ruler and pull down toward you. carve stripes at even intervals.

It seems like a simple task, but in fact it requires concentration to control equal intervals. Sometimes it is carved the stripe of a maximum of 11 in 1 centimeter of width.



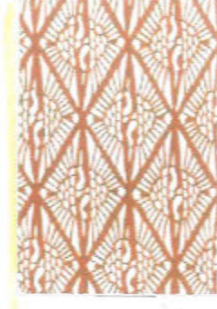
Dougubori

The craftsman make various shapes such as rhombus, square, petal, etc. by combing the blades of knives. They choose the tools from hundreds. If they don't have one, they start to make the tool first, they start carving afterwards.



Tsukibori

Stand the knife straight up, carving forward by moving the knife up and down. There are subtle shakes on the carving surface, and there are unique flavors and warmth of the hand-carving.



Kiribori

The shape of cutting edge of the knife is the semicircular. Screw the knife and make a small hole. Sometimes they carve about 100 holes in a square centimeter.

The size of the holes will changes with a little movement, it requires a lot of concentration.



Recently, the demands for kimono and pattern paper are decreasing. The craftsmen are also decreasing, and it's a big problem. In order to convey the technical skills of "Ise Katagami", they are trying to use the design for lamps, interiors, etc. I want more people to know these amazing techniques of

"Ise Katagami"

(テーマを選んだ理由)

昨年、伊勢志摩サミット会場で海外から来た人々を驚かせた伊勢型紙は、僕の住んでいる鈴鹿市の伝統工芸です。今は後継者不足が問題となっており、このようなすばらしい伝統工芸がこのままなくなってしまうのは残念なので、今後多くの人に伊勢型紙のことを知ってもらいたいと思います。このテーマを選ばました。



You can try carving at "Suzukashi Dentou Sangyou Kaikan."