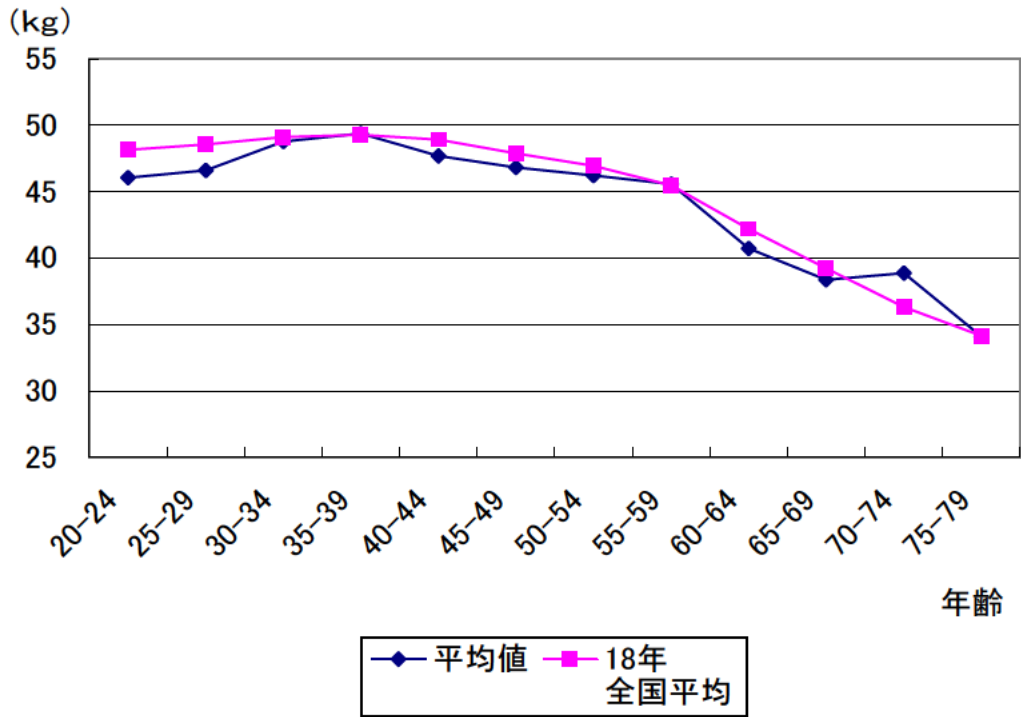
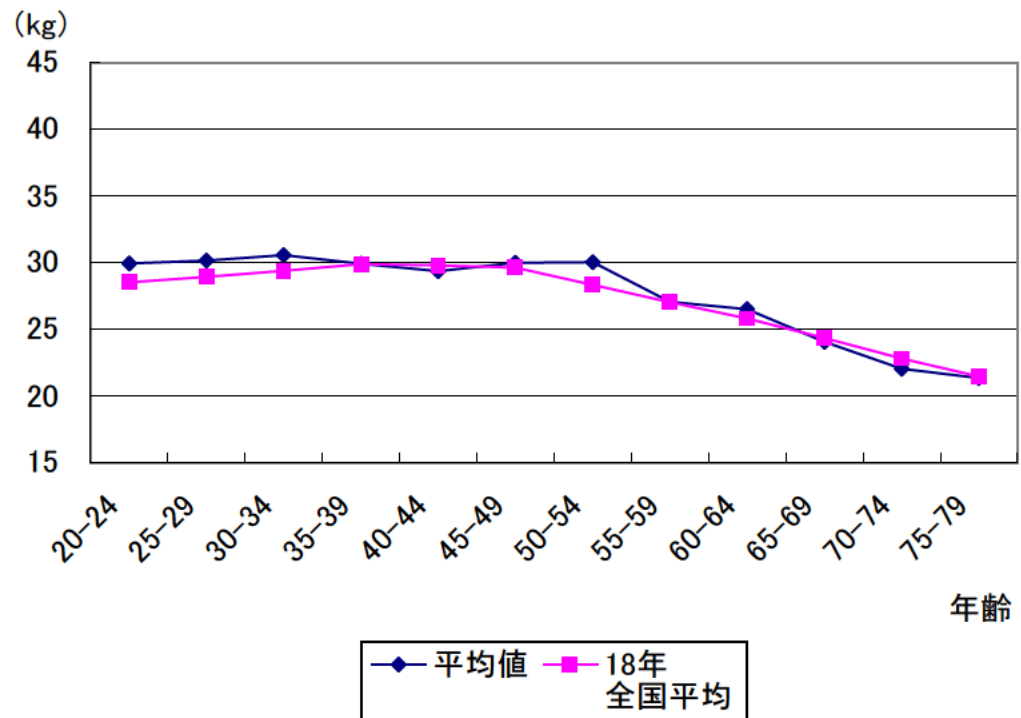


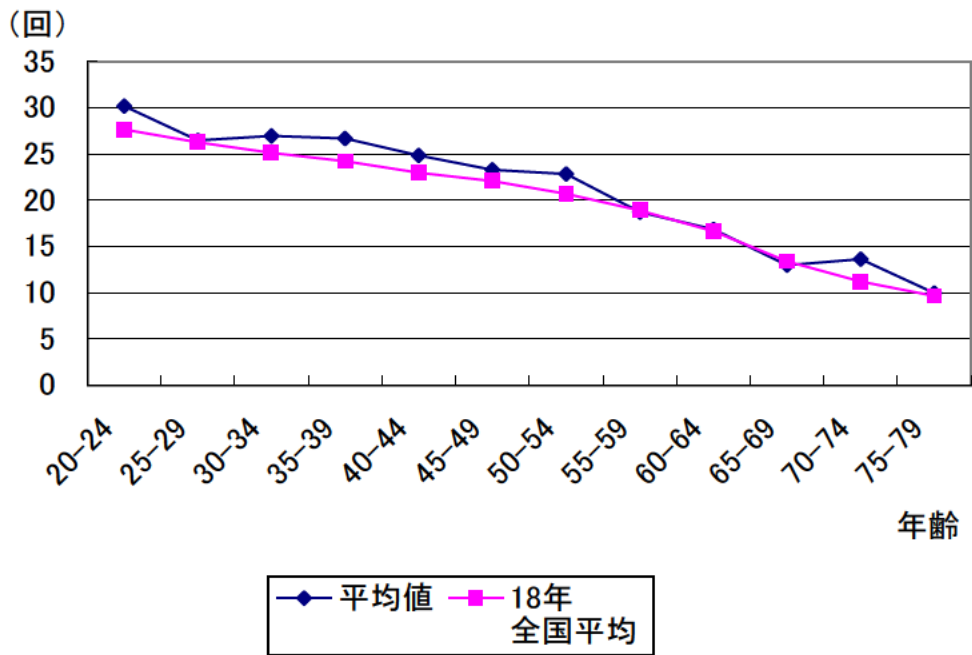
握力測定結果(男子)



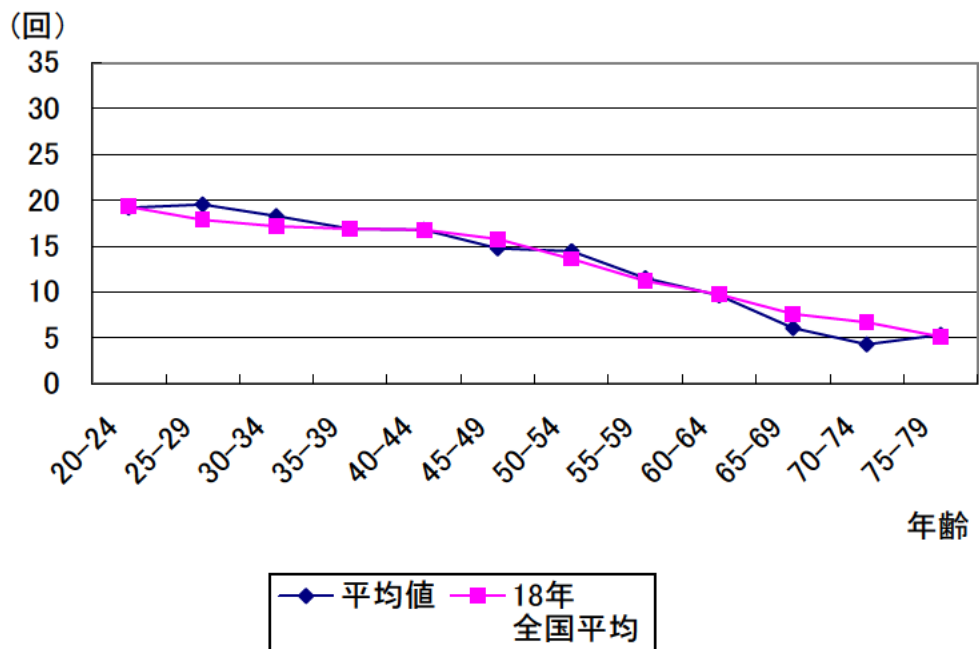
握力測定結果(女子)



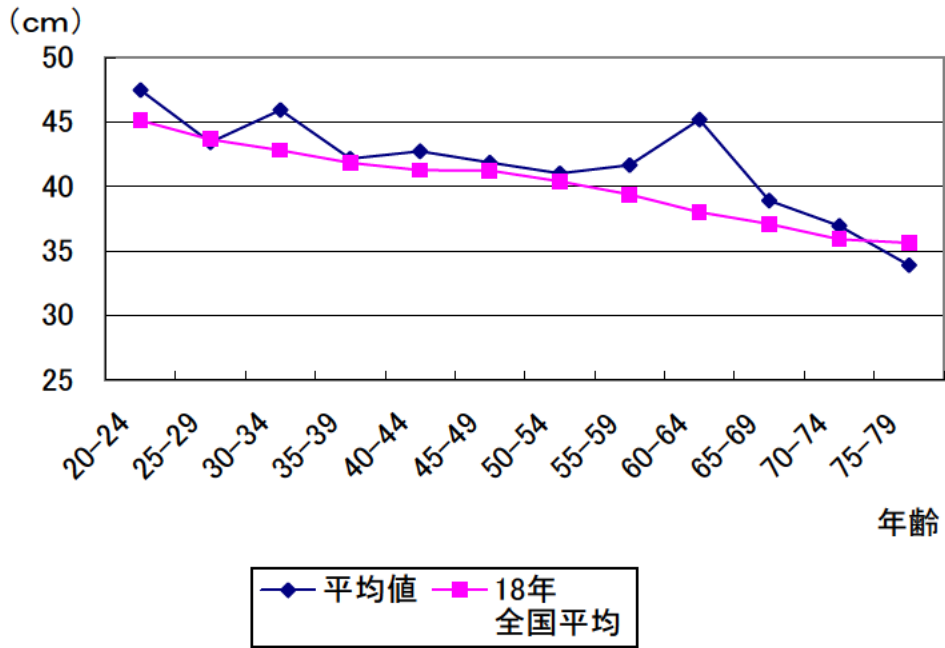
上体起こし測定結果(男子)



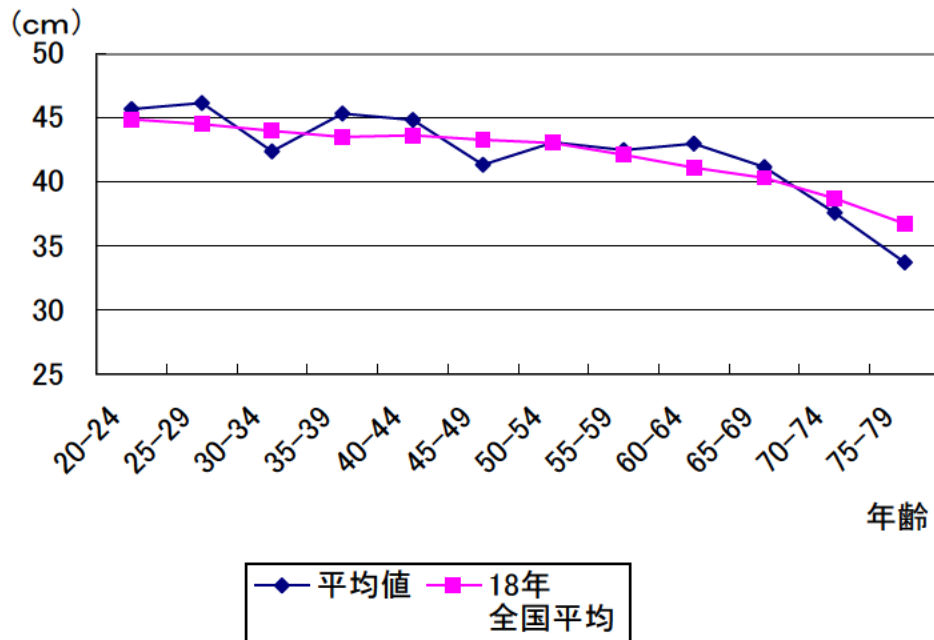
上体起こし測定結果(女子)



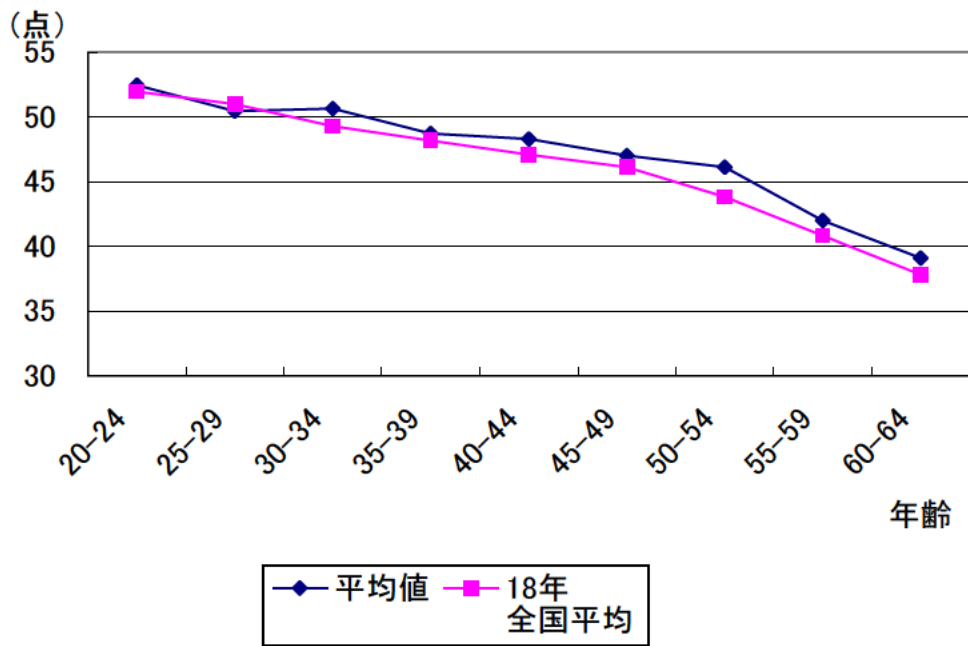
長座体前屈測定結果(男子)



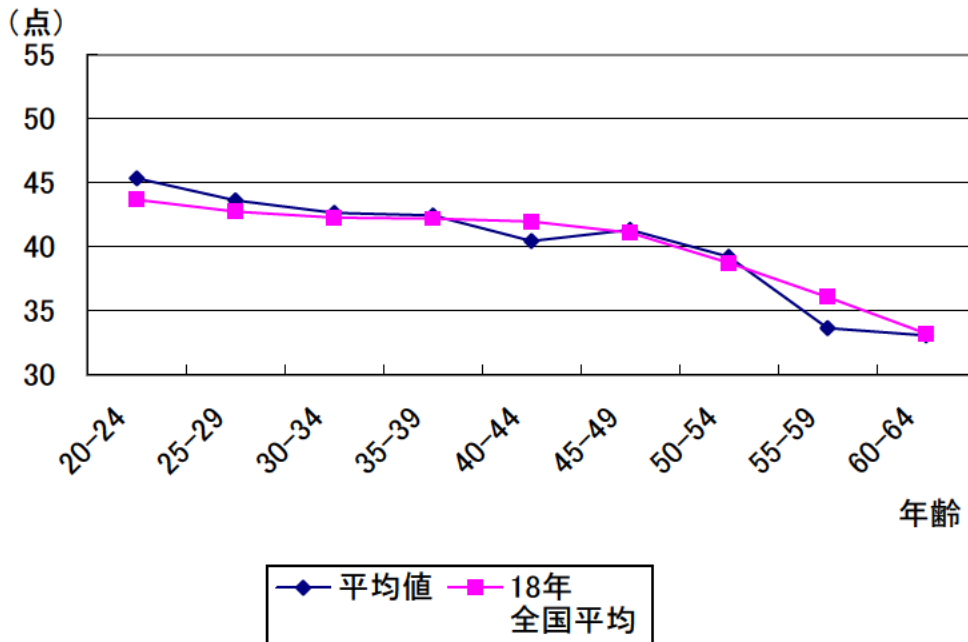
長座体前屈測定結果(女子)



反復横とび測定結果(男子)

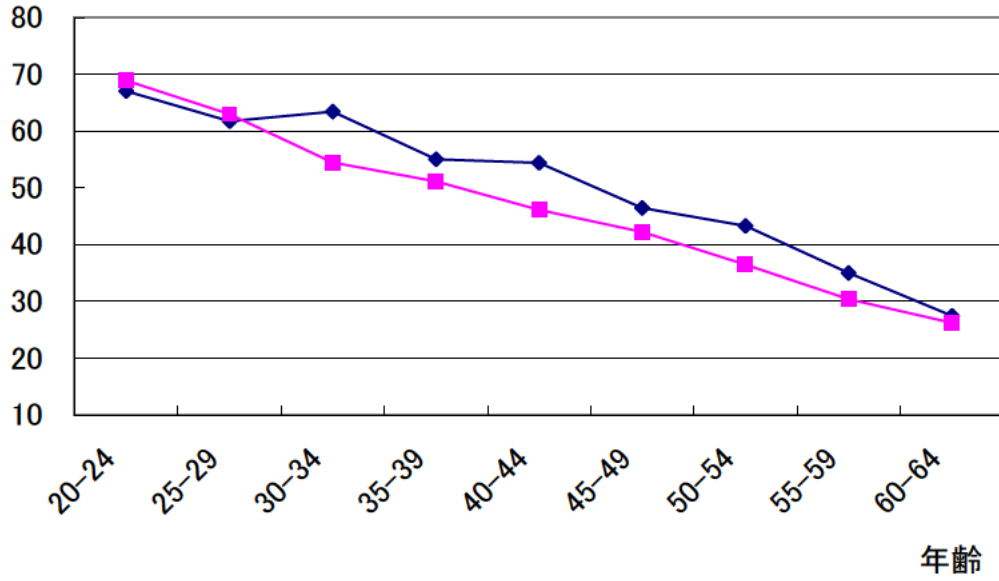


反復横とび測定結果(女子)



### 20mシャトルラン測定結果(男子)

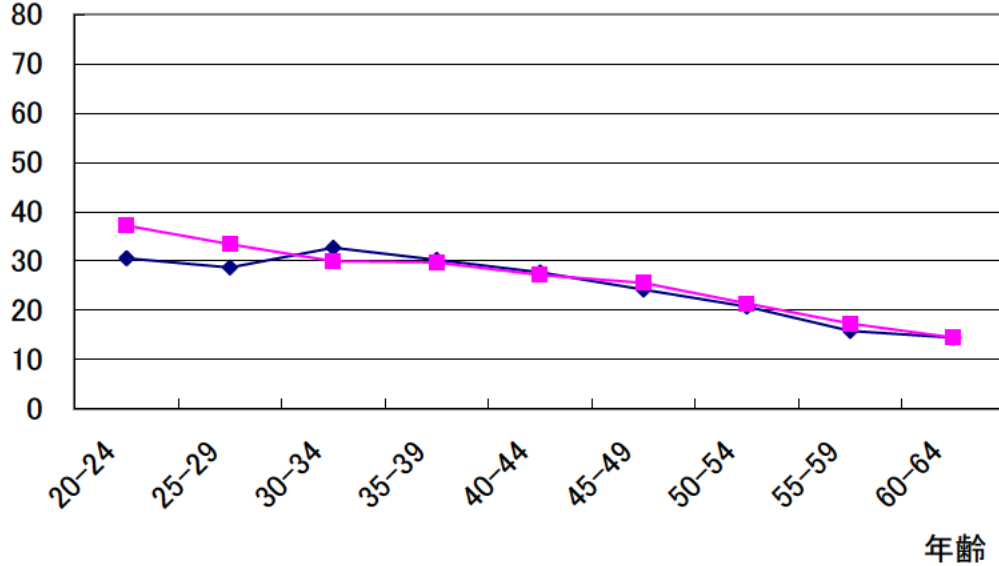
(折り返し数)



◆ 平均値    ■ 18年  
                  全国平均

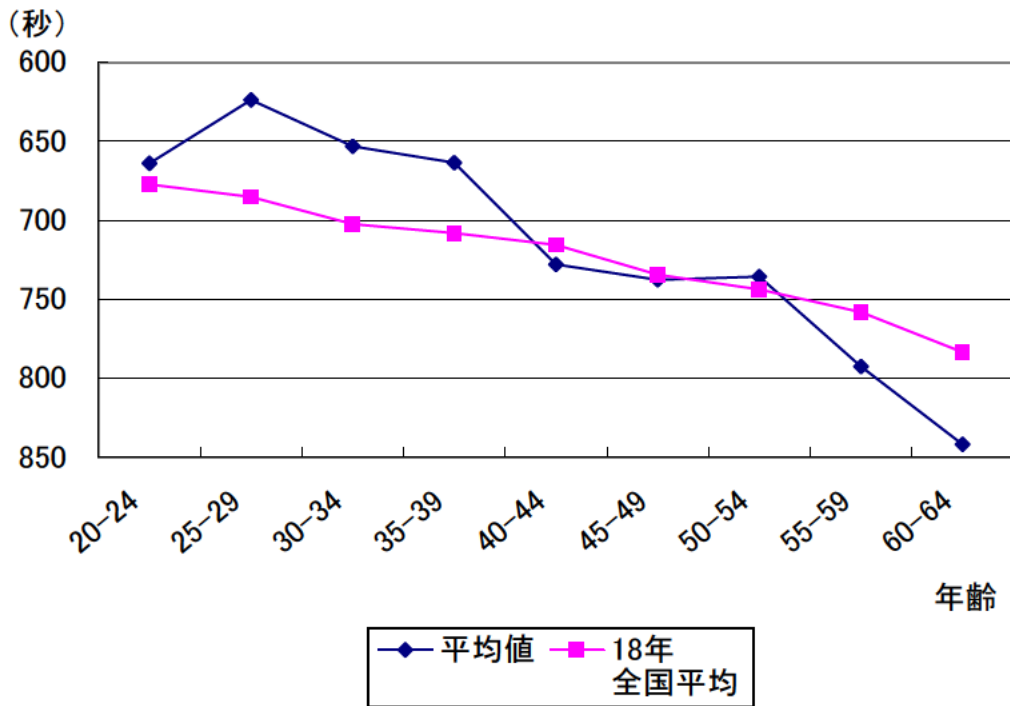
### 20mシャトルラン測定結果(女子)

(折り返し数)

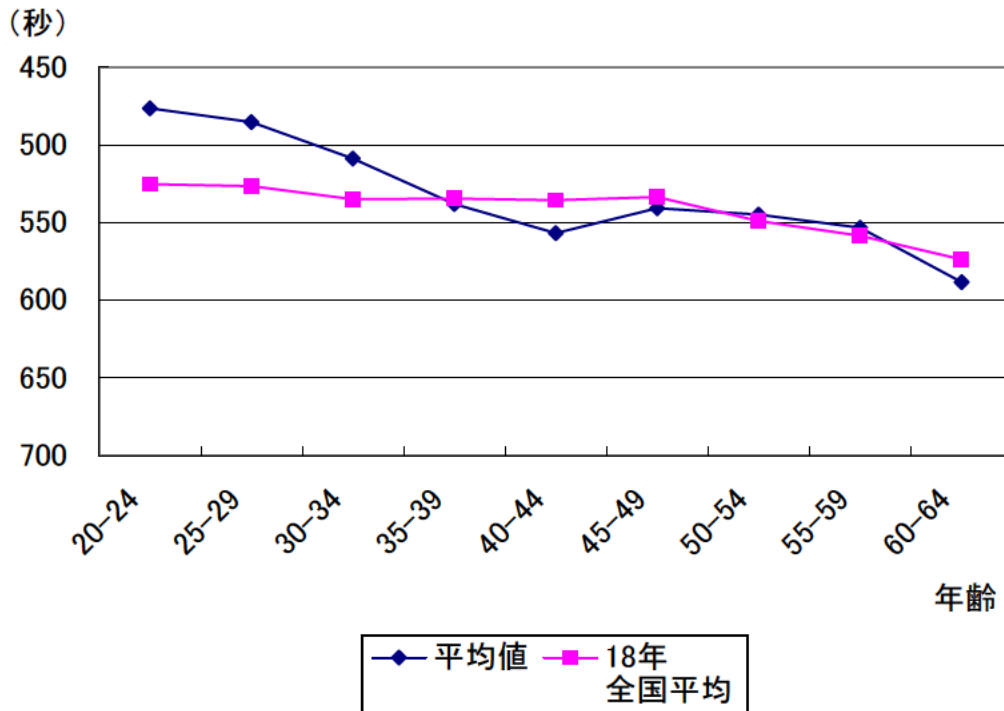


◆ 平均値    ■ 18年  
                  全国平均

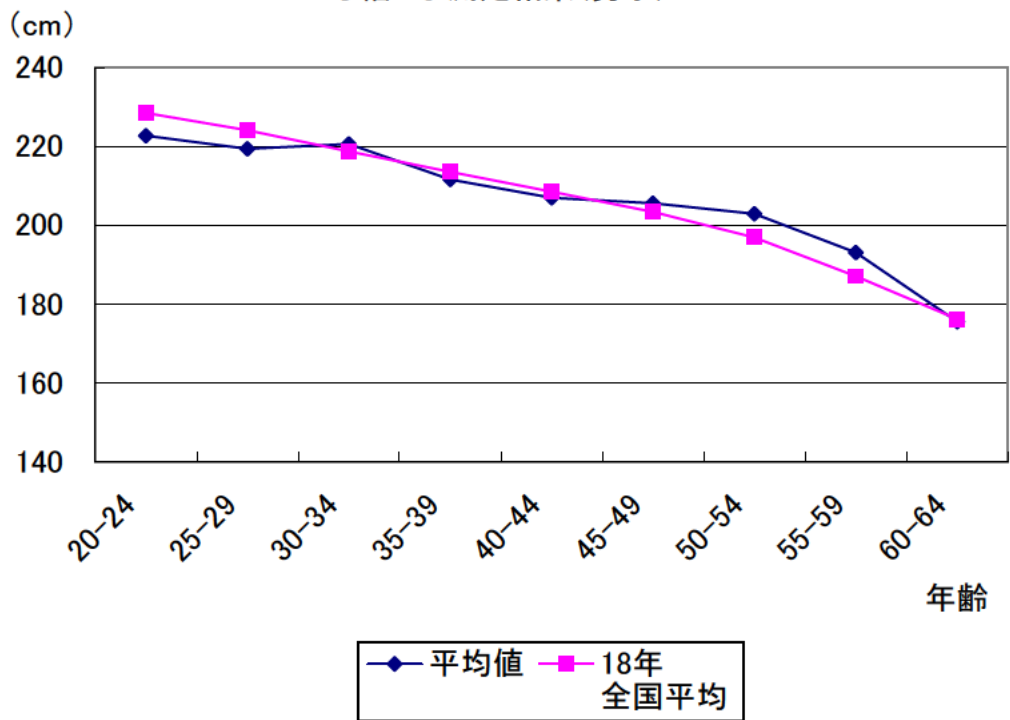
急歩測定結果(男子)1500m



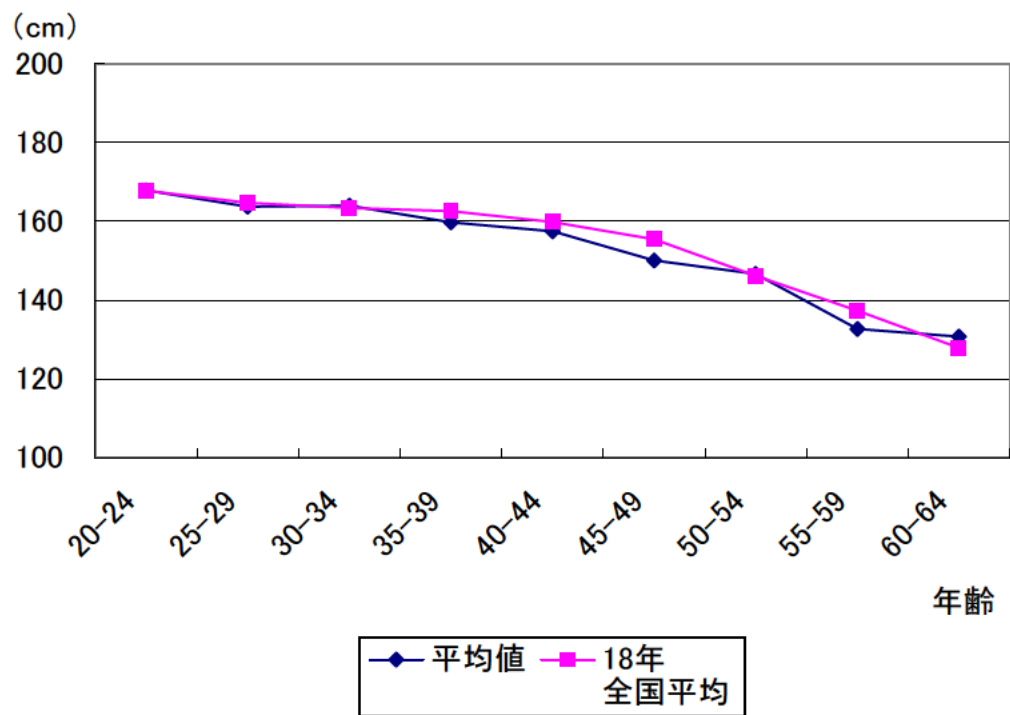
急歩測定結果(女子)1000m



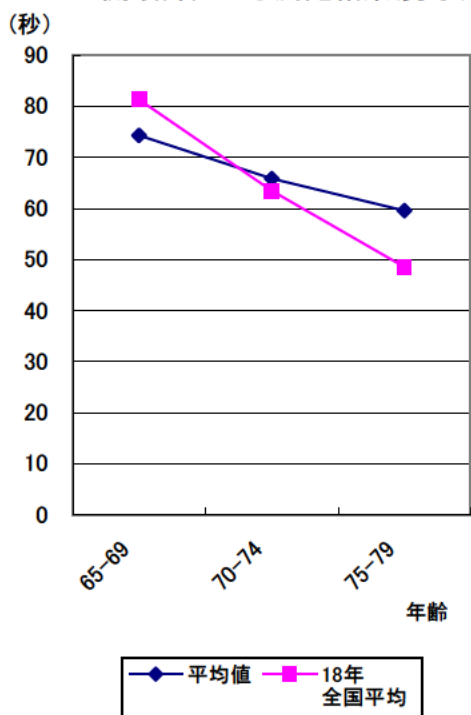
立ち幅とび測定結果(男子)



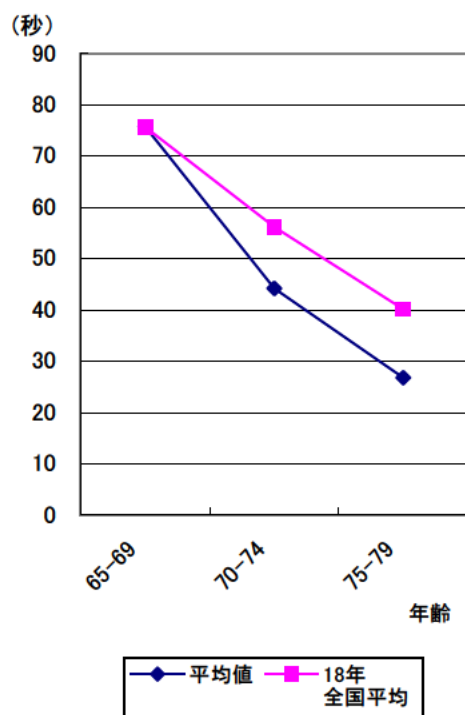
立ち幅とび測定結果(女子)



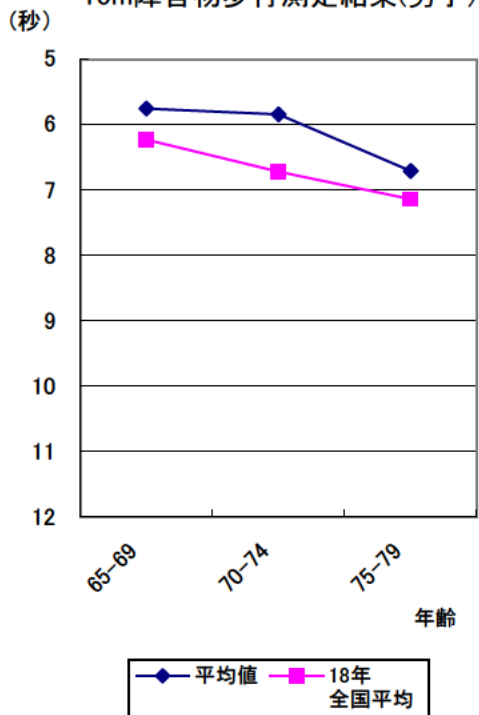
開眼片足立ち測定結果(男子)



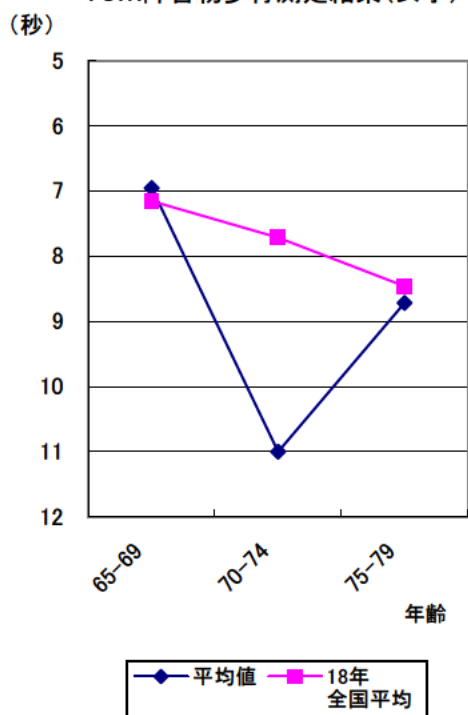
開眼片足立ち測定結果(女子)



10m障害物歩行測定結果(男子)

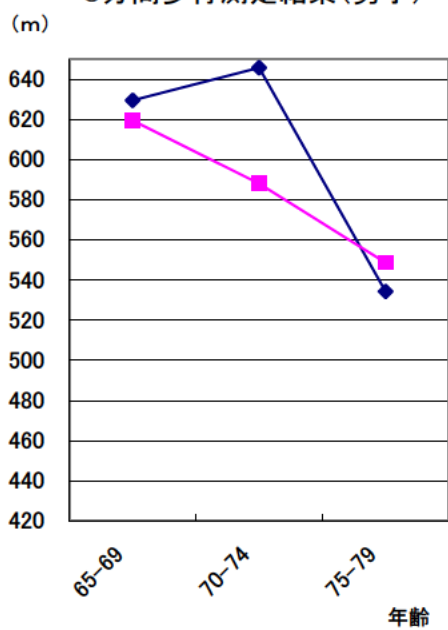


10m障害物歩行測定結果(女子)



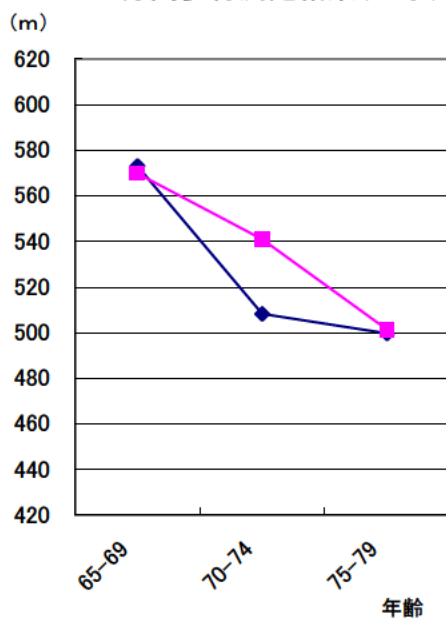


6分間歩行測定結果(男子)

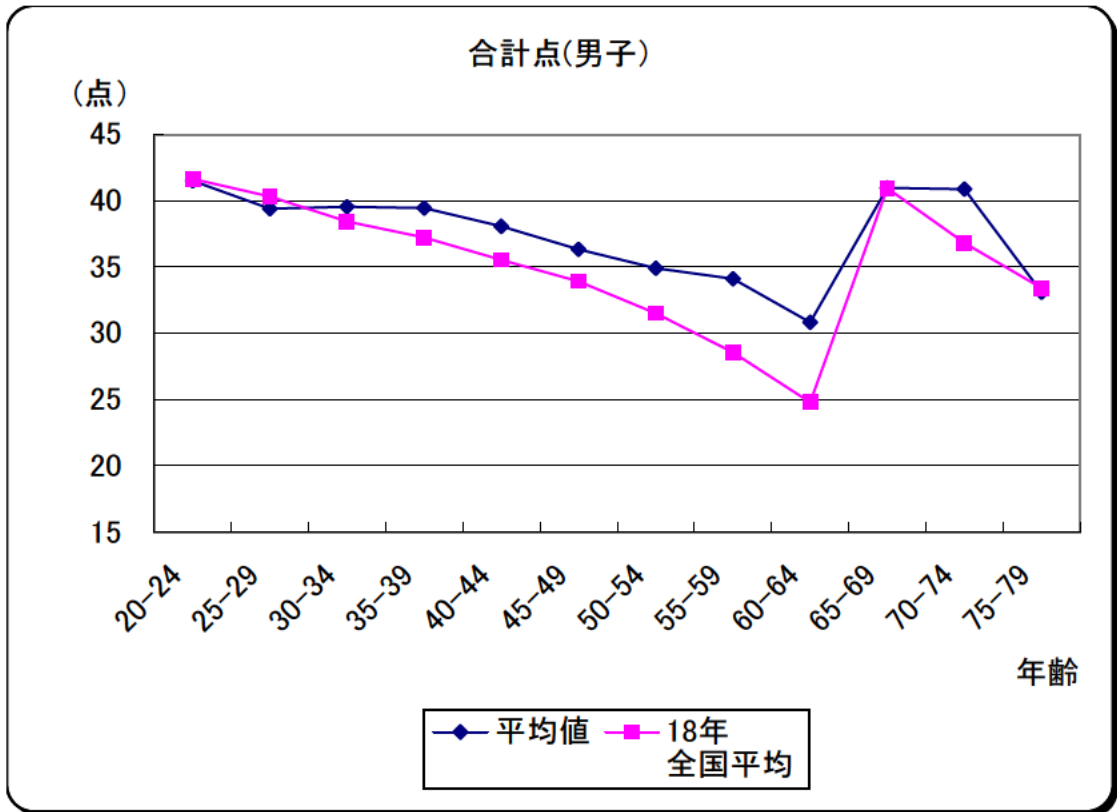


—◆— 平均值 —■— 18年全国平均

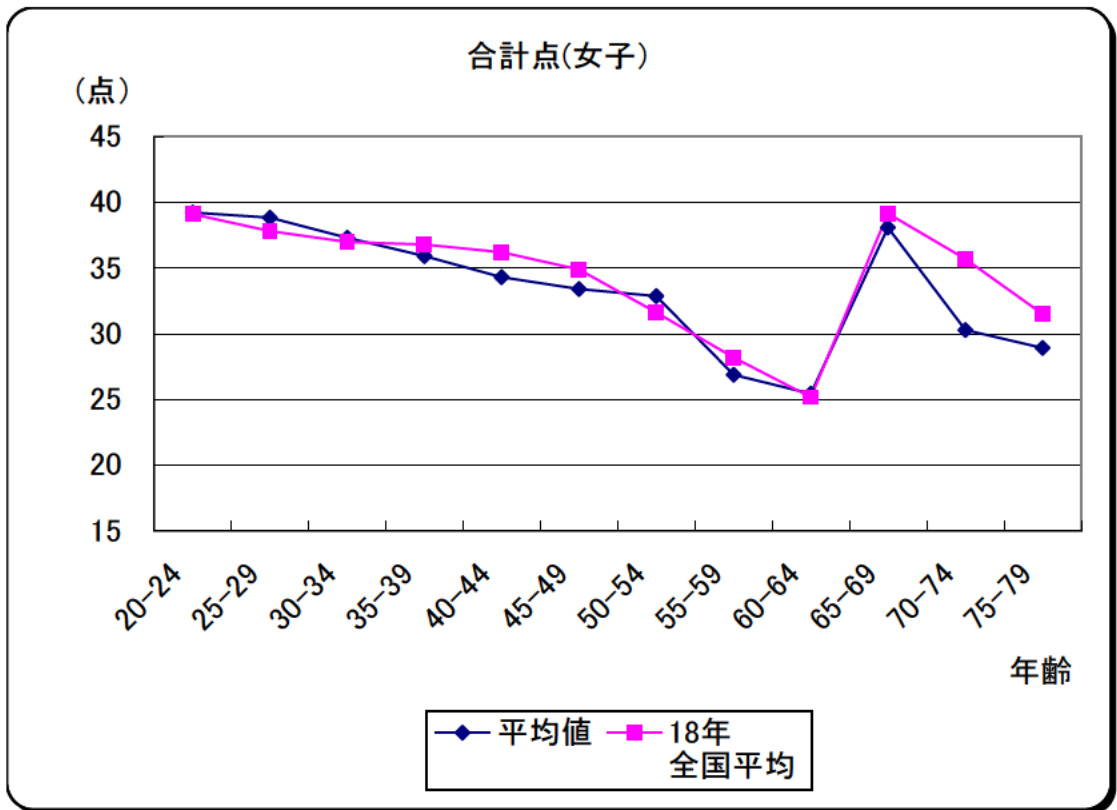
6分間歩行測定結果(女子)



—◆— 平均值 —■— 18年全国平均



(注) 20～64歳、65～79歳及び男女の得点基準は異なる



(注) 20～64歳、65～79歳及び男女の得点基準は異なる